



East Point Campus, Jnana Prabha, Virgo Nagar Post,
Bengaluru – 560049, Karnataka

2019-2020



East Point Campus, Jnana Prabha, Virgo Nagar Post,
Bengaluru – 560049, Karnataka

FEEDBACK ANALYSIS AND ACTION TAKEN REPORT

ACADEMIC YEAR: 2019-2020

OBJECTIVE OF FEED BACK:

- The institution aims to offer the best possible environment and learning experience to encourage students to perform to their full potential for academic achievement.
- Stakeholders i.e., students, teachers, employers play an important role in the evaluation, development and enhancement of quality of this learning process.
- Hence, the institution collects feedback from all the stakeholders i.e., students, teachers, employers and alumni every academic in year on curriculum/syllabi to evaluate its service policies can be revised and wake changes as per stakeholders' requirements.



PRINCIPAL
EAST POINT COLLEGE OF PHARMACY
BIDARAHALLI, BANGALORE-49



East Point Campus, Jnana Prabha, Virgo Nagar Post,
Bengaluru – 560049, Karnataka

FEEDBACK FROM STUDENTS

FEEDBACK FROM STUDENTS

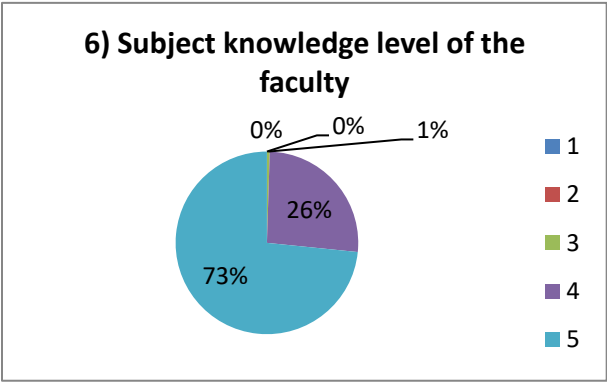
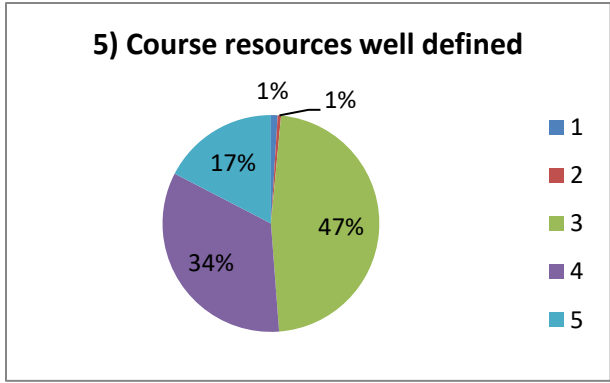
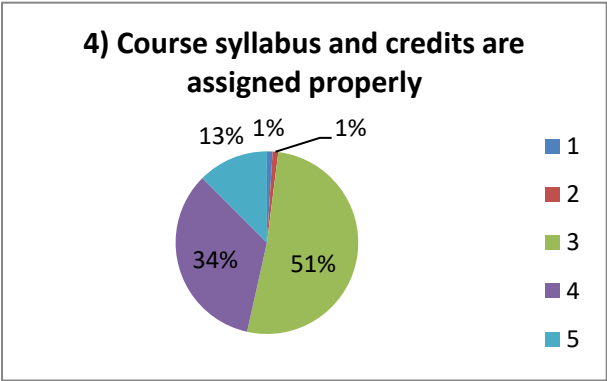
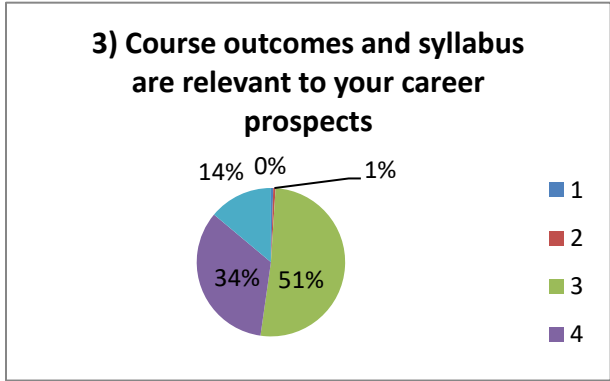
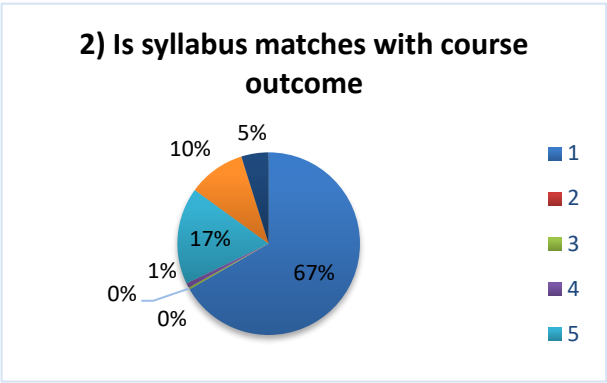
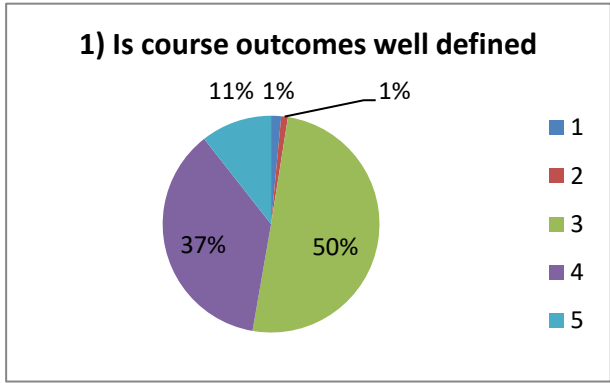
- The Students' Feedback on curriculum is designed to get formative feedback from students that can be used towards the improvements in the quality of course design and delivery, as well as student learning experiences.
- In the session 2019-2020, the college collected the feedback from students of different streams. The data is analyzed, and their suggestions are considered for possible incorporation in the curriculum.

B. Pharmacy Even Semester

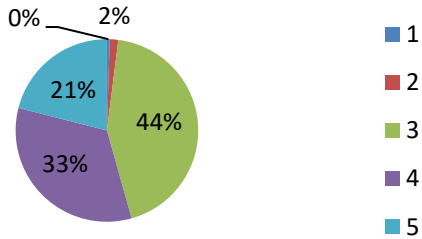
Respondents: 206

Sl. No	Feedback Questions	Responses				
		1	2	3	4	5
1	Is course outcomes well defined	1.5%	1%	50.3%	36.7%	10.6%
2	Is syllabus matches with course outcome	1%	2.5%	51.5%	30.5%	14.5%
3	Course outcomes and syllabus are relevant to your career prospects	0.5%	0.5%	51.2%	33.8%	13.9%
4	Course syllabus and credits are assigned properly	1%	1%	51.5%	34%	12.5%
5	Course resources well defined	1%	0.5%	47.3%	33.8%	17.4%
6	Subject knowledge level of the faculty	0%	0%	0.5%	26.1%	73.4%
7	Whether faculty Encourage questions from students	0.5%	1.5%	43.6%	33.3%	21%
8	Is faculty inspire and guide students to explore more on topics taught	0.5%	2.6%	45.9%	33.7%	17.3%
9	Whether Activity based learning encouraged	0.5%	2.1%	43.8%	34%	19.6%
10	Is online learning encouraged	1%	3.1%	45.1%	32.6%	18.1%
11	Assessment questions are in line with course learning objectives	1%	2%	43.4%	36.7%	16.8%
12	Provides feedback on grading	0.5%	2.6%	43.8%	31.4%	21.6%
13	Faculty members grade students fairly	0.5%	2.6%	45.9%	33%	18%
14	Cleanliness of class room	0.5%	1%	43.4%	37.2%	17.9%
15	Whether laboratory condition are good	0.5%	3.6%	48%	28.6%	19.4%

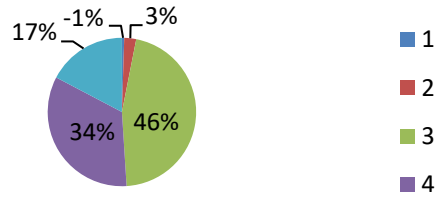
Feedback Analysis: 2019-2020 (EVEN)



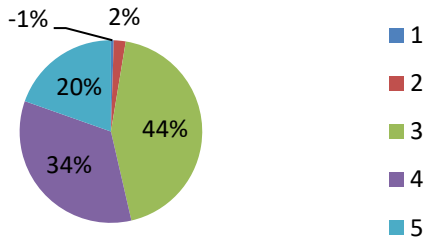
7) Whether faculty Encourage questions from students



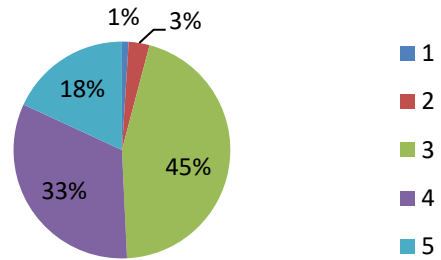
8) Is faculty inspire and guide students to explore more on topics taught



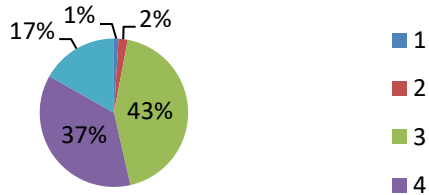
9) Whether Activity based learning encouraged



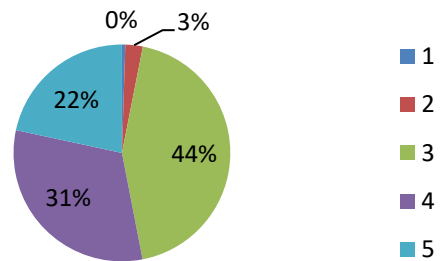
10) Is online learning encouraged



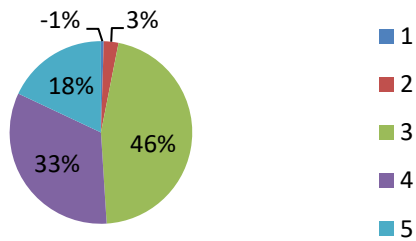
11) Assessment questions are in line with course learning objectives



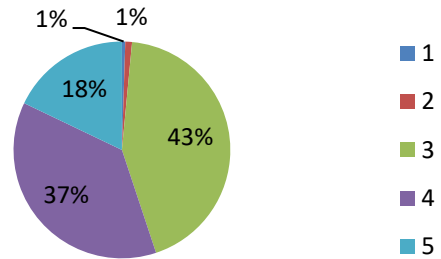
12) Provides feedback on grading



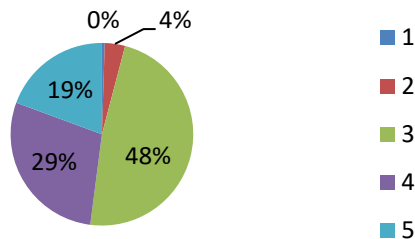
13) Faculty members grade students fairly



14) Cleanliness of class room



15) Whether laboratory condition are good



Sl. No	Questionnaire	Feedback	Action taken
1	Regarding library books	Students were not satisfied with number of books and volumes	Hence library books were purchased but still requested for some more books.



PRINCIPAL
EAST POINT COLLEGE OF PHARMACY
BIDARAHALLI, BANGALORE-49

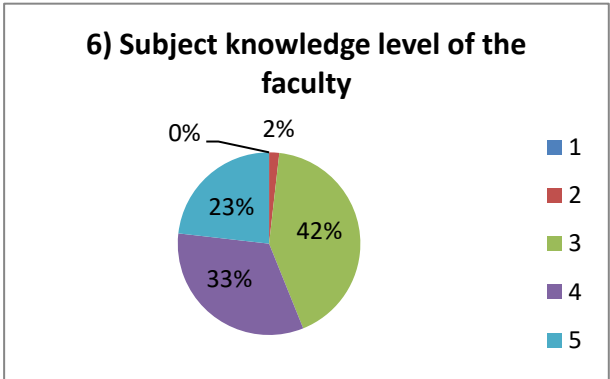
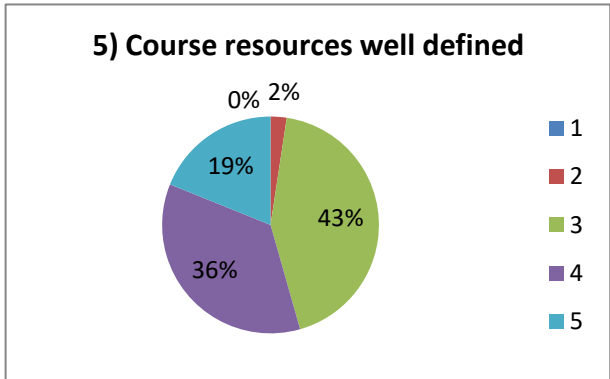
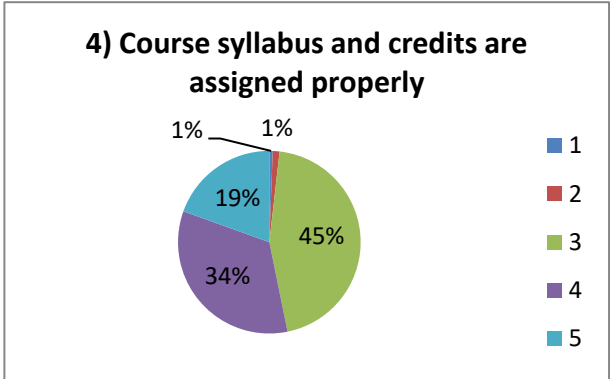
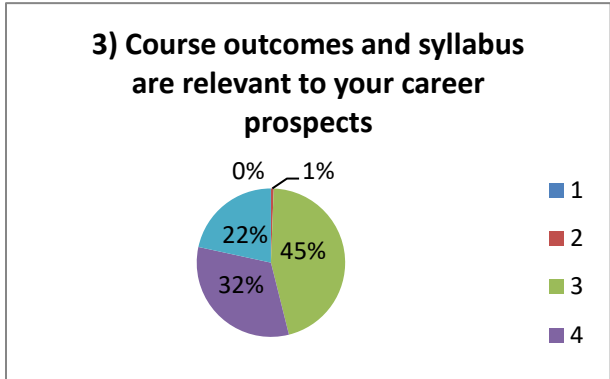
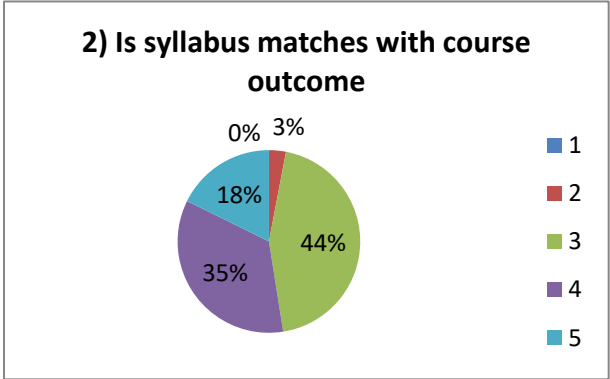
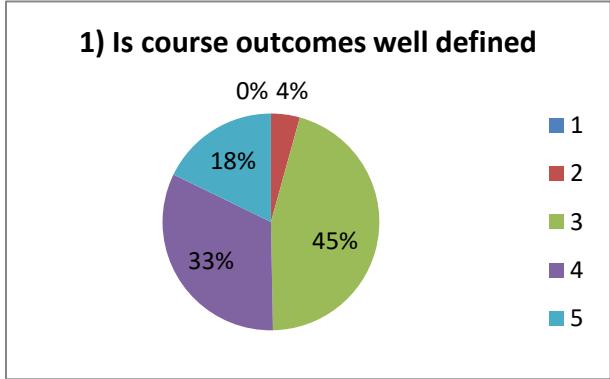
B. Pharm Odd Semester
Responses: 174

Sl. No	Feedback Questions	Responses				
		1	2	3	4	5
1	Is course outcomes well defined	0%	4.3%	45.4%	32.5%	17.8%
2	Is syllabus matches with course outcome	0%	3%	44.5%	34.8%	17.7%
3	Course outcomes and syllabus are relevant to your career prospects	0%	0.6%	45.5%	32.3%	21.6%
4	Course syllabus and credits are assigned properly	0.6%	1.2%	45%	33.7%	19.5%
5	Course resources well defined	0%	2.4%	43.2%	35.5%	18.9%
6	Subject knowledge level of the faculty	0%	1.8%	42.1%	32.9%	23.2%
7	Whether faculty Encourage questions from students	0%	1.2%	40.2%	32.3%	26.2%
8	Is faculty inspire and guide students to explore more on topics taught	0%	1.8%	43.9%	31.7%	22.6%
9	Whether Activity based learning encouraged	0.6%	0.6%	42.4%	28.5%	27.9%
10	Is online learning encouraged	0%	0.6%	44.2%	29.7%	25.5%
11	Assessment questions are in line with course learning objectives	0%	1.2%	45.7%	31.1%	22%
12	Provides feedback on grading	1.2%	1.8%	42.7%	36.6%	17.7%
13	Faculty members grade students fairly	0%	1.2%	46.1%	31.5%	21.2%
14	Cleanliness of class room	0%	0.6%	43.3%	31.1%	25%
15	Whether laboratory condition are good	0%	0.3%	42.7%	28.7%	25.6%

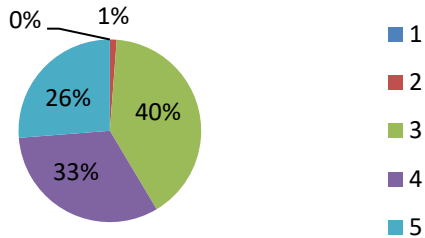


PRINCIPAL
 EAST POINT COLLEGE OF PHARMACY
 BIDARAHALLI, BANGALORE-49

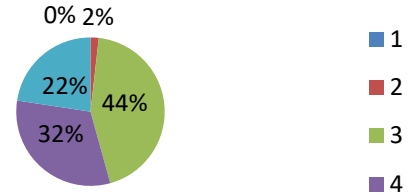
Feedback Analysis: 2019-2020(ODD)



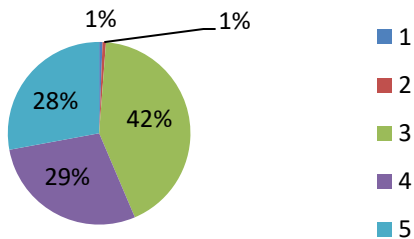
7) Whether faculty Encourage questions from students



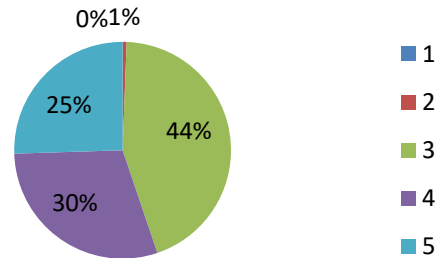
8) Is faculty inspire and guide students to explore more on topics taught



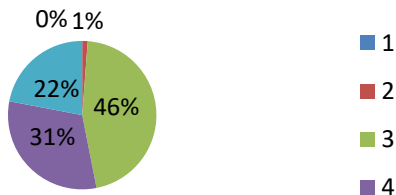
9) Whether Activity based learning encouraged



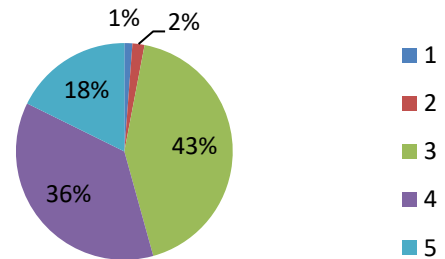
10) Is online learning encouraged

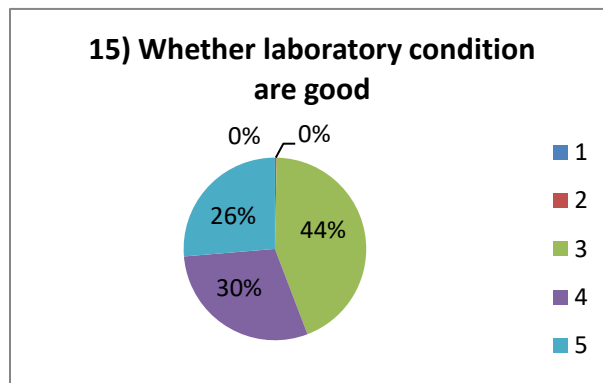
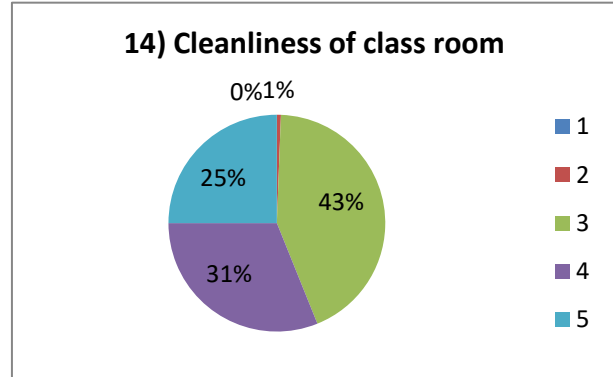
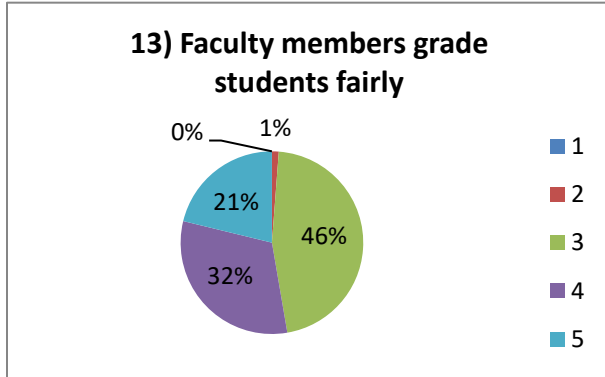


11) Assessment questions are in line with course learning objectives



12) Provides feedback on grading





Sl. No	Questionnaire	Feedback	Action taken
1	Regarding library books	Students were not satisfied with number of books and volumes	Hence library books were purchased but still requested for some more books.


 PRINCIPAL
 EAST POINT COLLEGE OF PHARMACY
 BIDARAHALLI, BANGALORE-49

Pharm D
Responses: 97

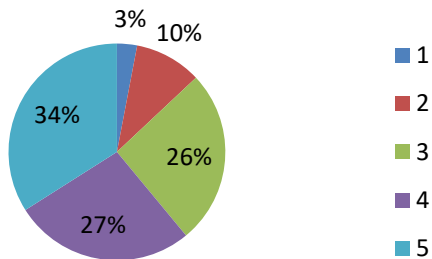
Sl. No	Feedback questions	Responses				
		1	2	3	4	5
1	Is course outcomes well defined	3%	10%	26%	27%	34%
2	Is syllabus matches with course outcome	2%	10%	14%	37%	37%
3	Course outcomes and syllabus are relevant to your career prospects	2%	5%	19%	27%	47%
4	Course syllabus and credits are assigned properly	2%	8%	20%	33%	37%
5	Course resources well defined	2%	4%	18%	37%	39%
6	Subject knowledge level of the faculty	2%	6%	19%	36%	37%
7	Whether faculty Encourage questions from students	3%	10%	20%	33%	34%
8	Is faculty inspire and guide students to explore more on topics taught	4%	8%	16%	30%	42%
9	Whether Activity based learning encouraged	3%	6%	18%	29%	44%
10	Is online learning encouraged	2%	6%	10%	37%	45%
11	Assessment questions are in line with course learning objectives	3%	6%	10%	36%	45%
12	Provides feedback on grading	1%	7%	21%	28%	43%
13	Faculty members grade students fairly	2%	6%	20%	26%	46%
14	Cleanliness of class room	4%	8%	16%	30%	42%
15	Whether laboratory condition are good	2%	10%	14%	37%	37%



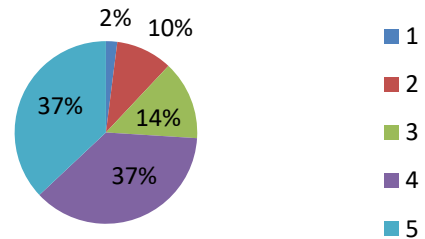
PRINCIPAL
EAST POINT COLLEGE OF PHARMACY
BIDARAHALLI, BANGALORE-49

Feedback Analysis: 2019-2020

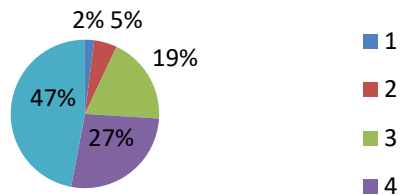
1) Is course outcomes well defined



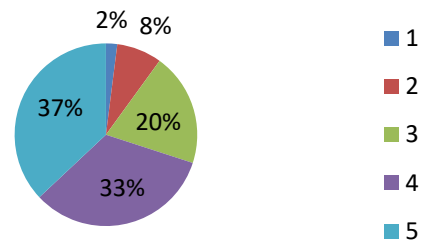
2) Is syllabus matches with course outcome



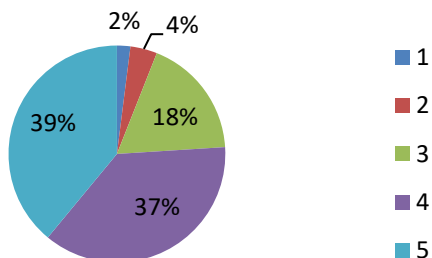
3) Course outcomes and syllabus are relevant to your career prospects



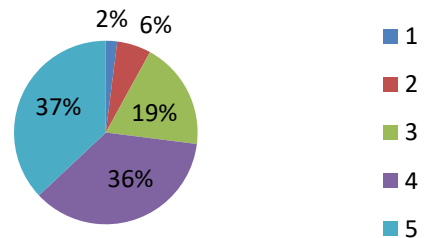
4) Course syllabus and credits are assigned properly



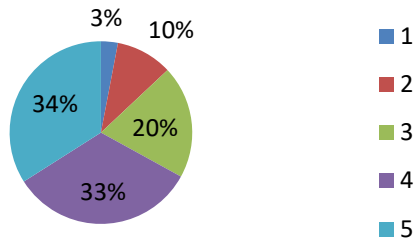
5) Course resources well defined



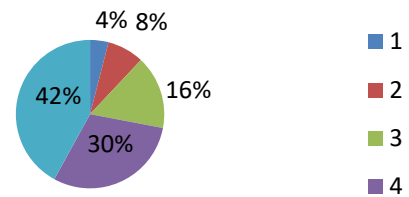
6) Subject knowledge level of the faculty



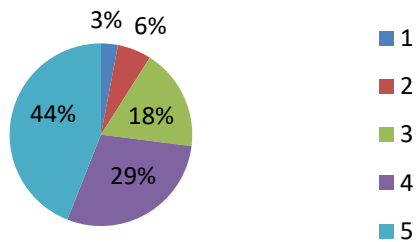
7) Whether faculty Encourage questions from students



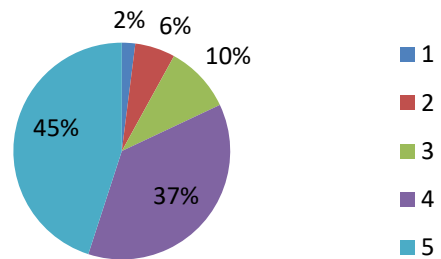
8) Is faculty inspire and guide students to explore more on topics taught



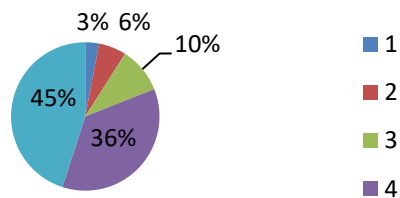
9) Whether Activity based learning encouraged



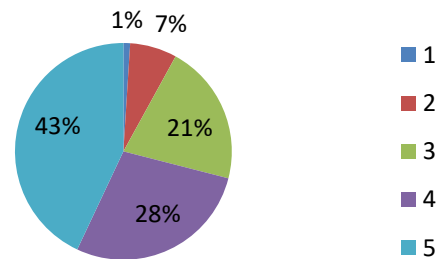
10) Is online learning encouraged



11) Assessment questions are in line with course learning objectives

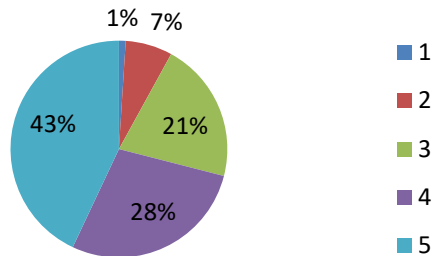


12) Provides feedback on grading

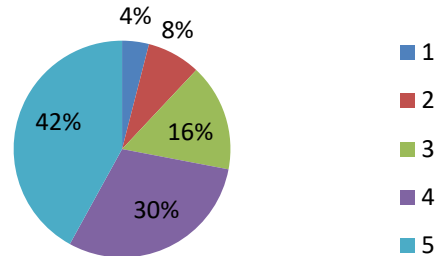



PRINCIPAL
EAST POINT COLLEGE OF PHARMACY
BIDARAHALLI, BANGALORE-49

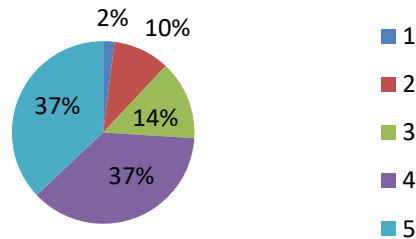
13) Provides feedback on grading




14) Cleanliness of class room



15) Laboratory equipment are in good condition



Sl. No	Questionnaire	Feedback	Action taken
1	Regarding library books	Students were not satisfied with number of books and volumes	Hence library books were purchased but still requested for some more books.



PRINCIPAL
EAST POINT COLLEGE OF PHARMACY
BIDARAHALLI, BANGALORE-49

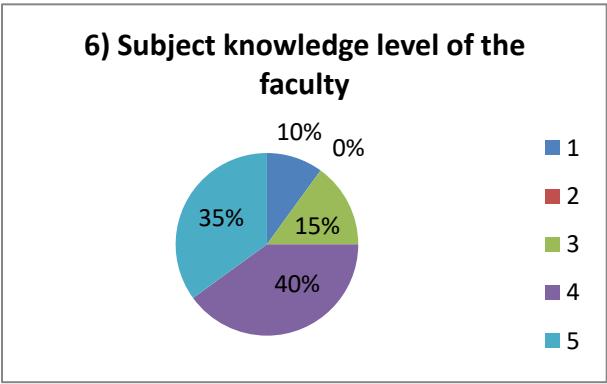
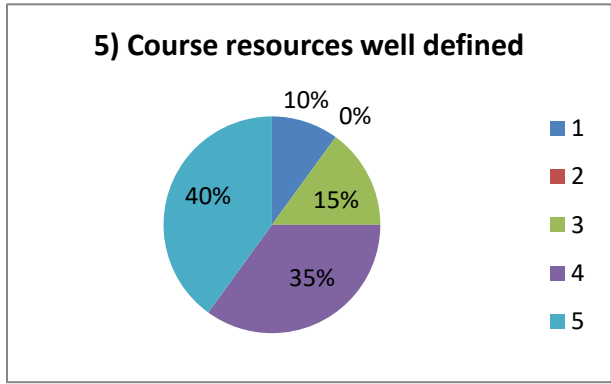
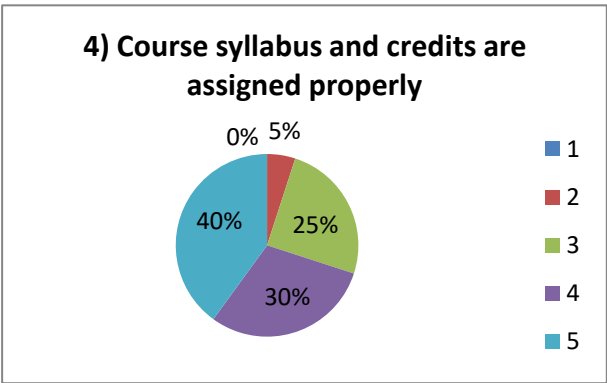
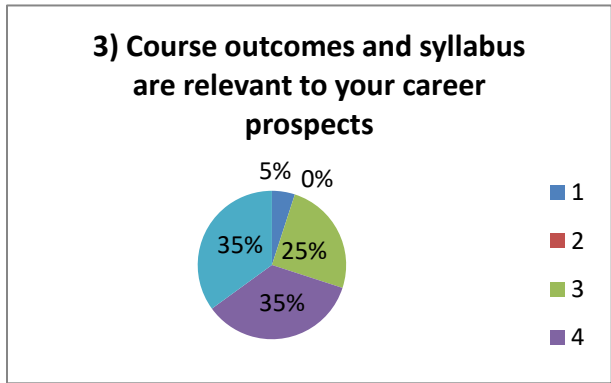
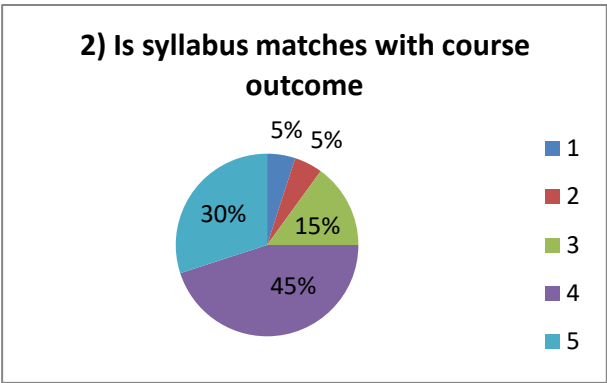
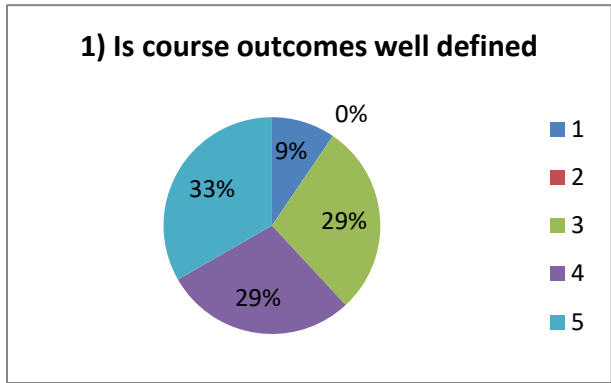
M. Pharm (Pharmaceutics)
Responses: 21

Sl. No	Feedback questions	Responses				
		1	2	3	4	5
1	Is course outcomes well defined	9.5%	0%	28.6%	28.6%	33.3%
2	Is syllabus matches with course outcome	5%	5%	15%	45%	30%
3	Course outcomes and syllabus are relevant to your career prospects	5%	0%	25%	35%	35%
4	Course syllabus and credits are assigned properly	0%	5%	25%	30%	40%
5	Course resources well defined	10%	0%	15%	35%	40%
6	Subject knowledge level of the faculty	10%	0%	15%	40%	35%
7	Whether faculty Encourage questions from students	0%	10%	10%	30%	50%
8	Is faculty inspire and guide students to explore more on topics taught	0%	0%	10%	60%	30%
9	Whether Activity based learning encouraged	5.3%	0%	21.1%	36.8%	36.8%
10	Is online learning encouraged	5.3%	0%	26.3%	36.8%	31.6%
11	Assessment questions are in line with course learning objectives	10%	5.3%	10.5%	21.1%	52.6%
12	Provides feedback on grading	5.3%	10.5%	21.1%	21.1%	42.1%
13	Faculty members grade students fairly	11.5%	5.6%	33.3%	33.3%	16.7%
14	Cleanliness of class room	5%	0%	30%	35%	30%
15	Whether laboratory condition are good	1%	10%	10%	30%	50%

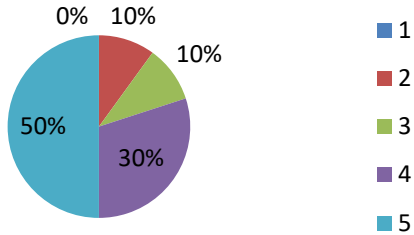


PRINCIPAL
EAST POINT COLLEGE OF PHARMACY
BIDARAHALLI, BANGALORE-49

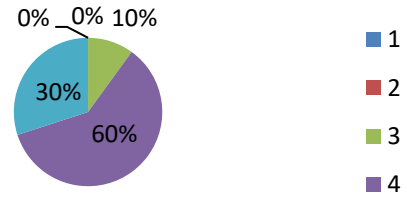
Feedback Analysis: 2019-2020



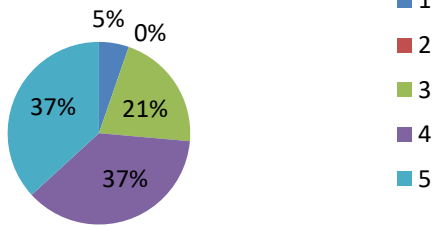
7) Whether faculty Encourage questions from students



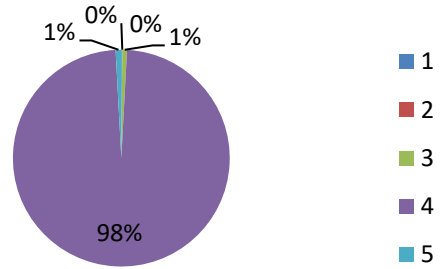
8) Is faculty inspire and guide students to explore more on topics taught



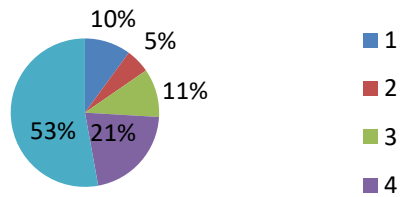
9) Whether Activity based learning encouraged



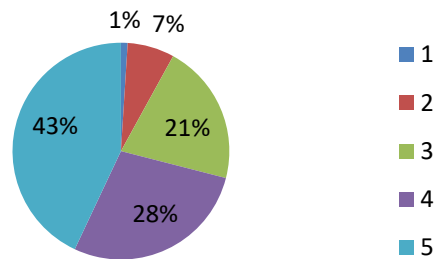
10) Is online learning encouraged



11) Assessment questions are in line with course learning objectives

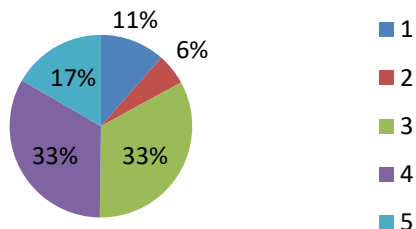


12) Provides feedback on grading

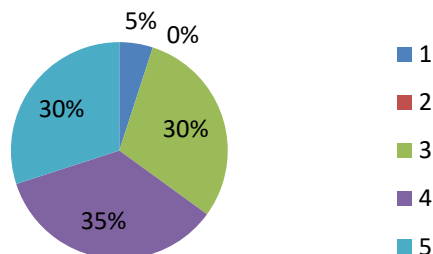



PRINCIPAL
EAST POINT COLLEGE OF PHARMACY
BIDARAHALLI, BANGALORE-49

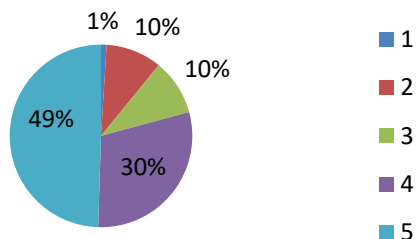
13) Faculty members grade students fairly



14) Cleanliness of class room



15) Whether laboratory condition are good



Sl. No	Questionnaire	Feedback	Action taken
1	Regarding library books	Students were not satisfied with number of books and volumes	Hence library books were purchased but still requested for some more books.



PRINCIPAL
EAST POINT COLLEGE OF PHARMACY
BIDARAHALLI, BANGALORE-49

M. Pharm (Pharmacology)
Responses: 16

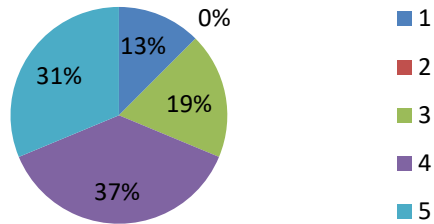
Sl. No	Feedback questions	Responses				
		1	2	3	4	5
1	Is course outcomes well defined	12.5%	0%	18.8%	37.5%	31.3%
2	Is syllabus matches with course outcome	6.7%	6.7%	20%	40%	26.7%
3	Course outcomes and syllabus are relevant to your career prospects	0%	0%	13.3%	53.3%	33.3%
4	Course syllabus and credits are assigned properly	0%	0%	13.3%	40%	46.7%
5	Course resources well defined	0%	0%	13.3%	33.3%	53.3%
6	Subject knowledge level of the faculty	6.7%	6.7%	13.3%	33.3%	40%
7	Whether faculty Encourage questions from students	0%	6.7%	13.3%	33.3%	46.7%
8	Is faculty inspire and guide students to explore more on topics taught	6.7%	0%	13.3%	46.7%	33.3%
9	Whether Activity based learning encouraged	6.7%	0%	6.7%	26.3%	60%
10	Is online learning encouraged	6.7%	0%	0%	33.3%	60%
11	Assessment questions are in line with course learning objectives	6.7%	6.7%	20%	20%	46.7
12	Provides feedback on grading	0%	0%	7.1%	42.9%	50%
13	Faculty members grade students fairly	0%	6.7%	13.3%	33.3%	46.7%
14	Cleanliness of class room	0%	0%	12.5%	37.5%	50%
15	Whether laboratory condition are good	6.3%	0%	6.3%	56.3%	31.3%



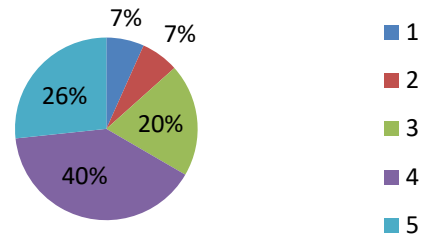
PRINCIPAL
EAST POINT COLLEGE OF PHARMACY
BIDARAHALLI, BANGALORE-49

Feedback Analysis: 2019-2020

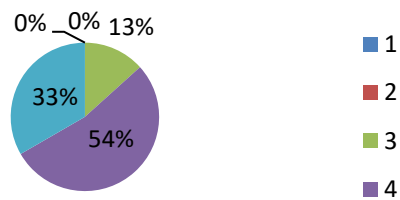
1) Is course outcomes well defined



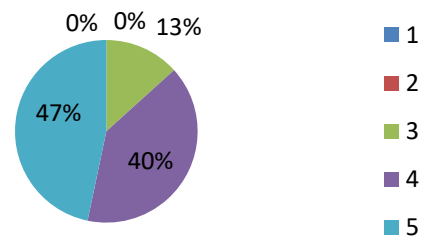
2) Is syllabus matches with course outcome



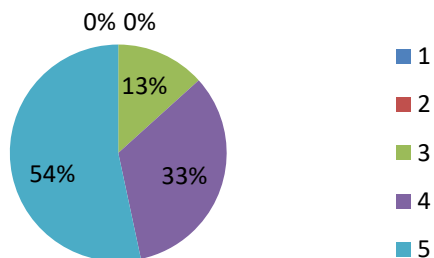
3) Course outcomes and syllabus are relevant to your career prospects



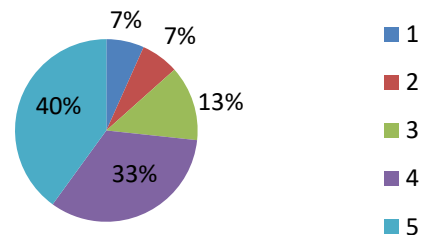
4) Course syllabus and credits are assigned properly



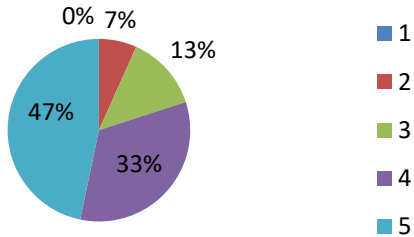
5) Course resources well defined



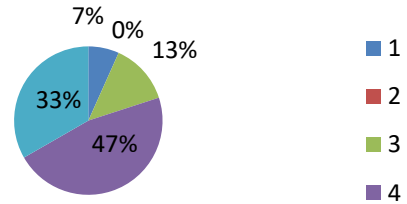
6) Subject knowledge level of the faculty



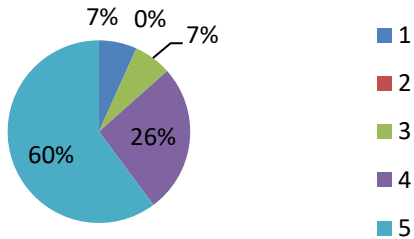
7) Whether faculty Encourage questions from students



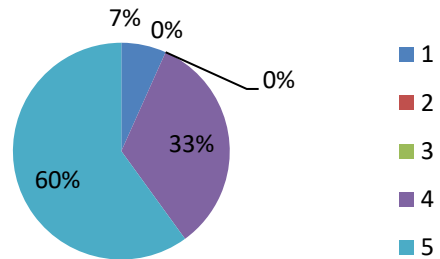
8) Is faculty inspire and guide students to explore more on topics taught



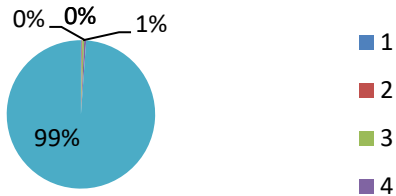
9) Whether Activity based learning encouraged



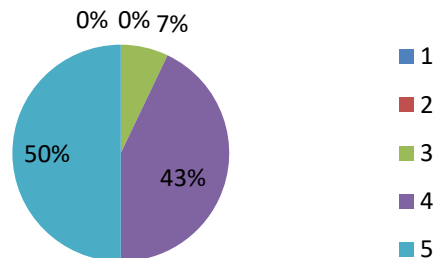
10) Is online learning encouraged



11) Assessment questions are in line with course learning objectives

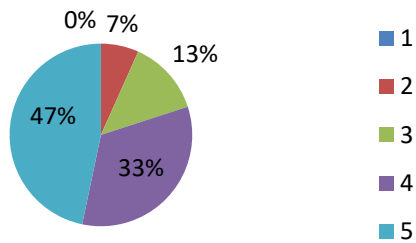


12) Provides feedback on grading

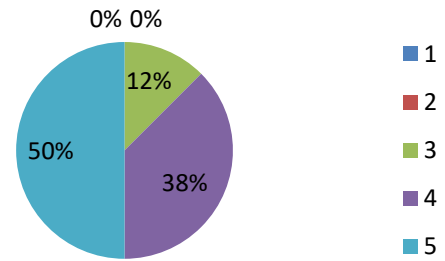


[Signature]
PRINCIPAL
EAST POINT COLLEGE OF PHARMACY
BIDARAHALLI, BANGALORE-49

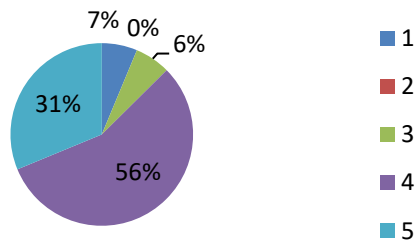
13) Faculty members grade students fairly



14) Cleanliness of class room



15) Whether laboratory condition are good



Sl. No	Questionnaire	Feedback	Action taken
1	Regarding library books	Students were not satisfied with number of books and volumes	Hence library books were purchased but still requested for some more books.


PRINCIPAL
EAST POINT COLLEGE OF PHARMACY
BIDARAHALLI, BANGALORE-49



East Point Campus, Jnana Prabha, Virgo Nagar Post,
Bengaluru – 560049, Karnataka

FEEDBACK FROM FACULTY

FEEDBACK FROM FACULTY

Feedback from the faculties for the Ambience and the Academic performance of the institution is collected through online mode (Google form). The feedback analysis is done and the analysis report is submitted to the principal and then to the management for the necessary actions.

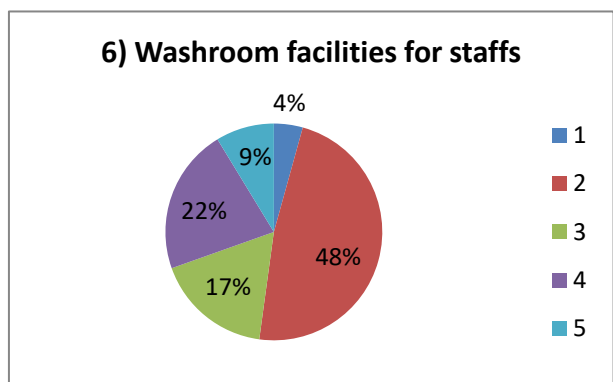
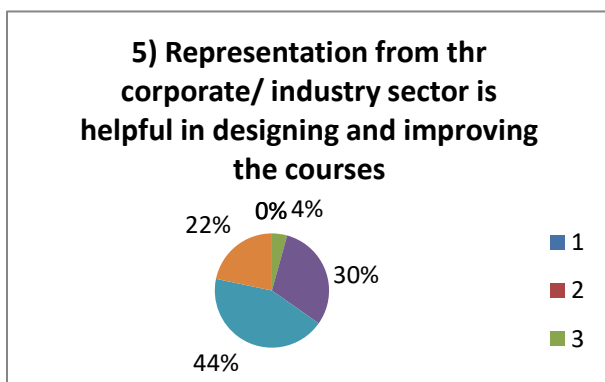
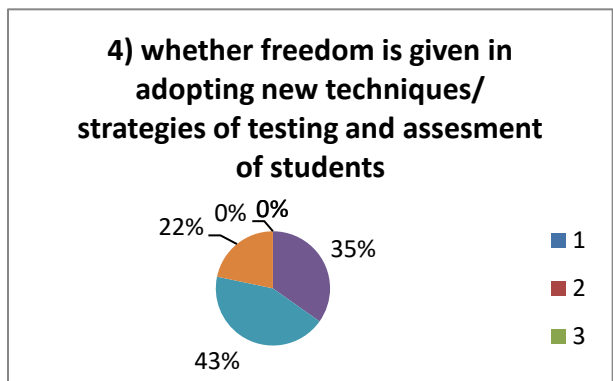
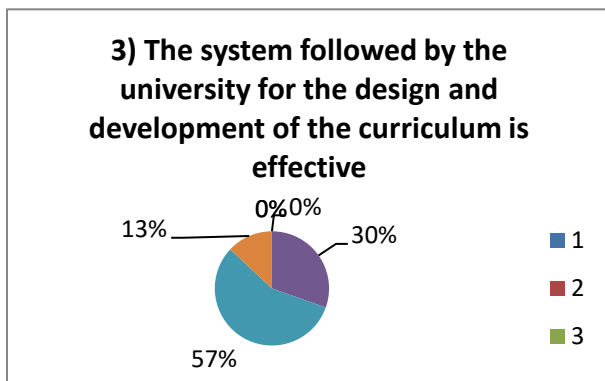
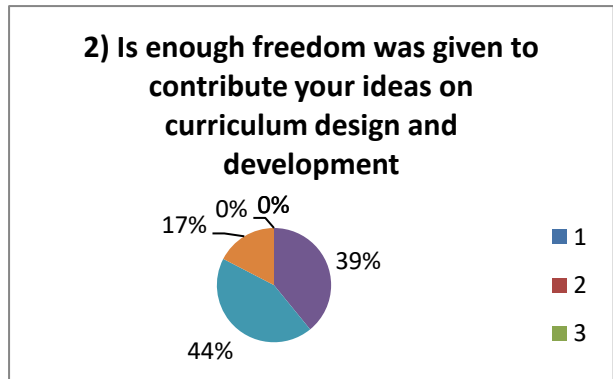
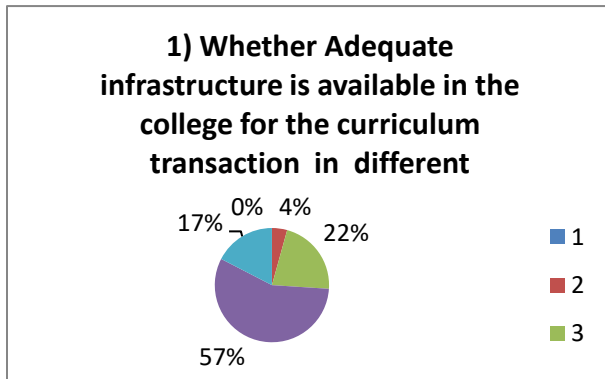
Responses: 23

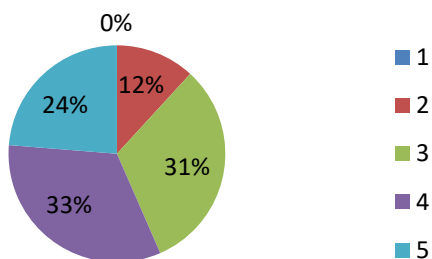
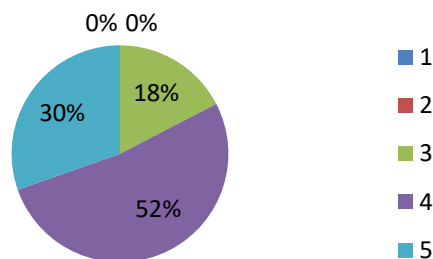
Sl. No	Feedback questions	Responses				
		1	2	3	4	5
1	Whether Adequate infrastructure is available in the college for the curriculum transaction in different Modes	0%	4.3%	21.7%	56.5%	17.4%
2	Is enough freedom was given to contribute your ideas on curriculum design and development	0%	0%	39.1%	43.5%	17.4%
3	The System followed by the University for the design and development of the curriculum is effective.	0%	0%	30.4%	56.5%	13%
4	Whether Freedom is given in adopting new techniques/ strategies of testing and assessment of students	0%	0%	34.8%	43.5%	21.7%
5	Representation from the corporate / Industry sector is helpful in designing and improving the courses	0%	4.3%	30.4%	43.5%	21.7%
6	Washroom facilities for staffs	4.3%	47.8%	17.4%	21.7%	8.7%
7	Parking facilities for staffs	0%	13%	34.8%	36.1%	26.1%
8	Whether College timing is good	0%	0%	17.4%	52.2%	30.4%



PRINCIPAL
EAST POINT COLLEGE OF PHARMACY
BIDARAHALLI, BANGALORE-49

Feedback Analysis: 2019 -2020



7) Parking facilities for staffs

8) Whether College timing is good


Sl. No	Questionnaire	Feedback	Action taken
1	Washroom facilities for staffs	Some staffs are unsatisfied with the washroom.	Hence Principal initiated request for separate washroom facility for staffs to management
2	Parking facilities for staffs	Some staffs are unsatisfied with the Parking space.	As per instructions the parking area was upgraded.



PRINCIPAL
EAST POINT COLLEGE OF PHARMACY
BIDARAHALLI, BANGALORE-49



East Point Campus, Jnana Prabha, Virgo Nagar Post,
Bengaluru – 560049, Karnataka

FEEDBACK FROM ALUMNI

FEEDBACK FROM ALUMNI

Feedback from the alumni for the Ambience and the Academic performance of the institution is collected through online mode (Google form). The feedback analysis is done and the analysis report is submitted to the principal and then to the management for the necessary actions.

Responses: 11

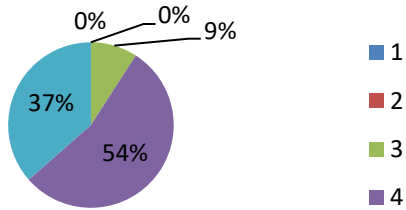
Sl. No	Feedback questions	Responses				
		1	2	3	4	5
1	College location and campus	0%	0%	9.1%	54.5%	35.5%
2	Student facilities and amenities	0%	0%	10%	30%	60%
3	Program Curriculum	0%	0%	30%	0%	70%
4	Teaching and Learning Resources	0%	10%	10%	30%	50%
5	Opportunities for co-curricular activities	0%	10%	0%	30%	60%
6	Opportunities for extra- curricular activities	0%	0%	30%	50%	20%
7	Internship opportunities	0%	0%	0%	30%	70%
8	Placement opportunities	0%	10%	10%	10%	70%
9	Innovation and entrepreneurship opportunities	0%	0%	10%	30%	60%
10	Encouragement for Higher studies	0%	0%	20%	40%	40%



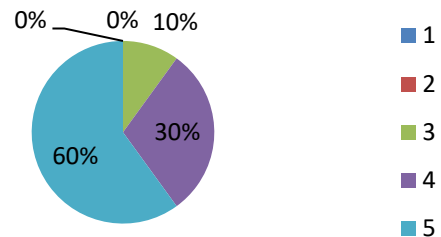
PRINCIPAL
 EAST POINT COLLEGE OF PHARMACY
 BIDARAHALLI, BANGALORE-49

Feedback Analysis: 2019-2020

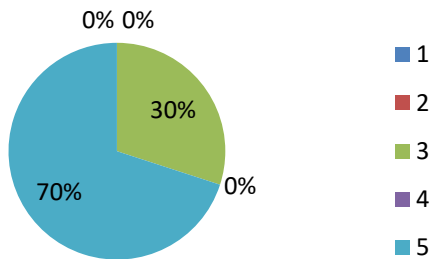
1) COLLEGE LOCATION AND CAMPUS



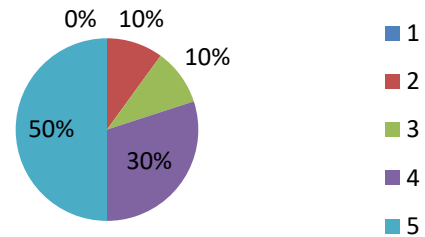
2) STUDENT FACILITIES AND AMINITIES



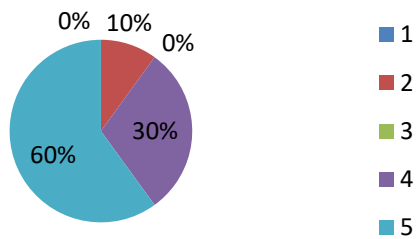
3) PROGRAM CURRICULUM



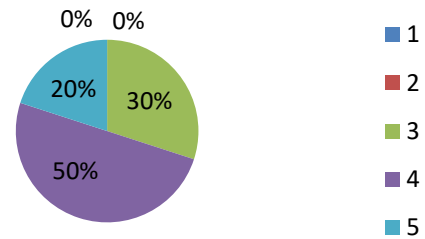
4) TEACHING AND LEARNING RESOURCES

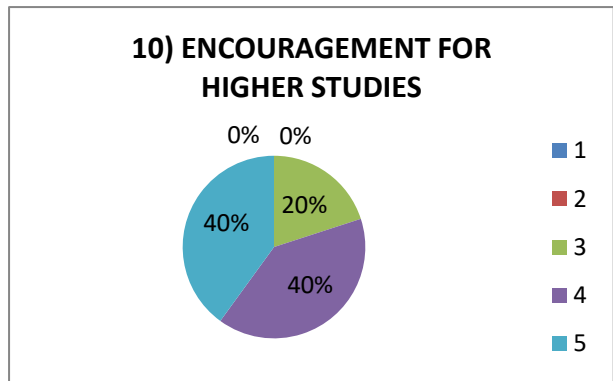
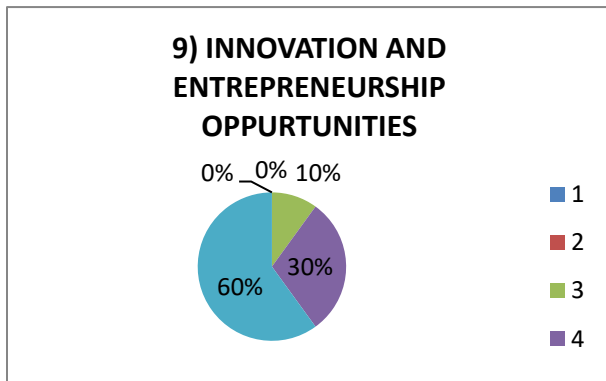
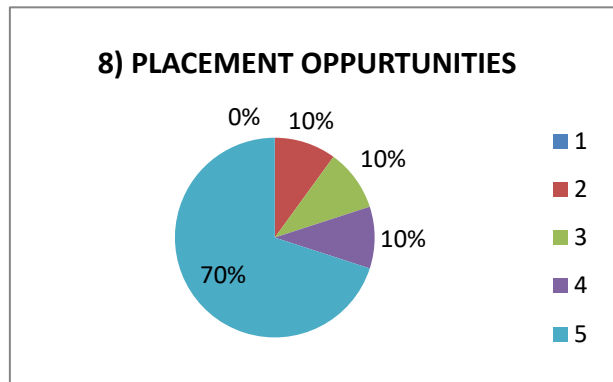
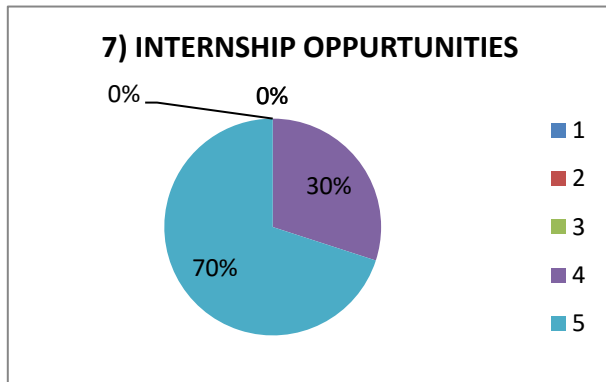


5) OPPURTUNITIES FOR CO-CURRICULUM ACTIVITIES



6) OPPURTUNITIES FOR EXTRA-CURRICULUM ACTIVITES





Sl. No	Feedback	Action taken
1	Placement Opportunities	Placement Cell Has Initiated Placement Drive and Approached Various Companies for Placement of Students


PRINCIPAL
EAST POINT COLLEGE OF PHARMACY
BIDARAHALLI, BANGALORE-49



East Point Campus, Jnana Prabha, Virgo Nagar Post,
Bengaluru – 560049, Karnataka


PARENTS FEEDBACK ABOUT COLLEGE

PARENTS FEEDBACK ABOUT COLLEGE

Feedback from the parents for the Ambience and the Academic performance of the institution is collected through online mode (Google form). The feedback analysis is done and the analysis report is submitted to the principal and then to the management for the necessary actions.

Responses: 15

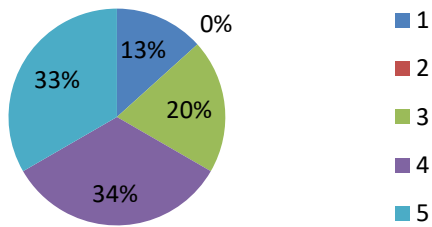
Sl. No	Feedback questions	Responses				
		1	2	3	4	5
1	College Location	13.3%	0%	20%	33.3%	33.3%
2	College campus	6.7%	6.7%	26.7%	26.7%	33.3%
3	College Building	0%	6.7%	26.7%	53.3%	13.3%
4	Transport Facility	6.7%	0%	20%	53.3%	20%
5	Parking Facility	0%	6.7%	20%	20%	53.3%
6	Security	13.3%	6.7%	13.3%	33.3%	33.3%
7	Co-Curricular Activities	13.3%	6.7%	13.3%	46.7%	20%
8	Extra-Curricular Activities	6.7%	0%	20%	33.3%	40%
9	Canteen Facilities	0%	6.7%	20%	40%	33.3%
10	Hostel Facilities	0%	0%	33.3%	26.7%	40%
11	Interaction with admission department	6.7%	0%	33.3%	13.3%	46.7%
12	Communication with college administrators / faculty members	0%	6.7%	13.3%	66.7%	13.3%



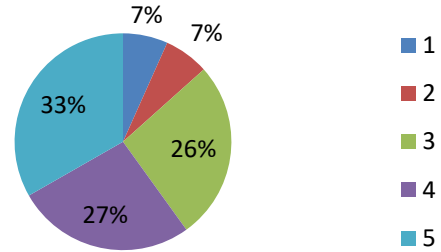
PRINCIPAL
EAST POINT COLLEGE OF PHARMACY
BIDARAHALLI, BANGALORE-49

Feedback Analysis: 2019-2020 (About College)

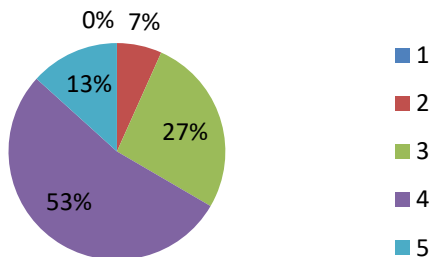
1) COLLEGE LOCATION



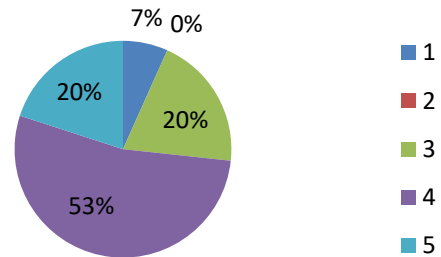
2) COLLEGE CAMPUS



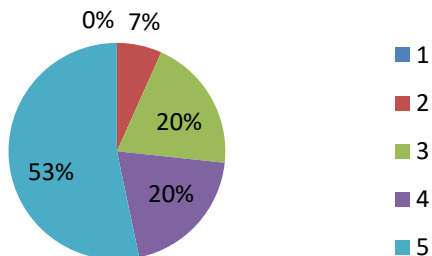
3) COLLEGE BUILDINGS



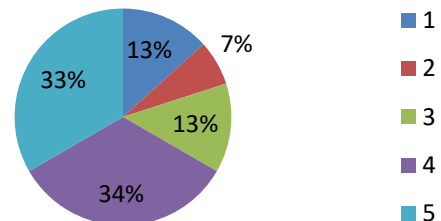
4) TRANSPORT FACILITY



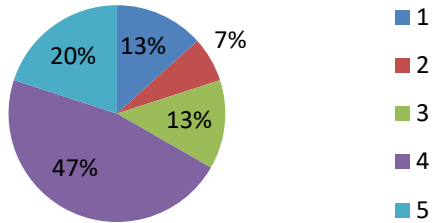
5) PARKING FACILITY



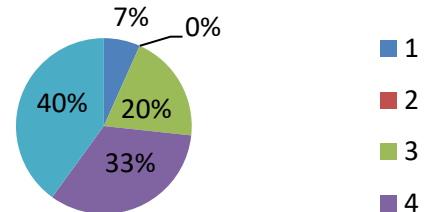
6) SECURITY



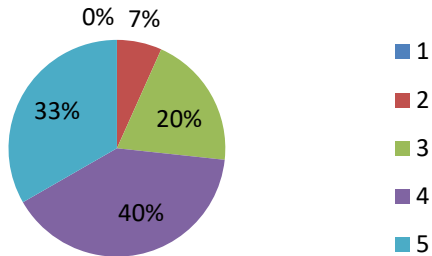
7) CO-CURRICULAR ACTIVITIES



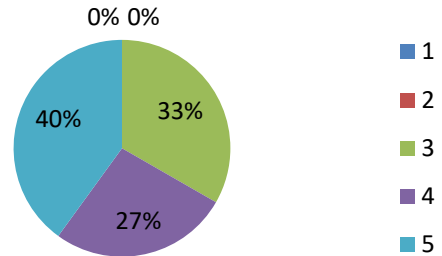
8) EXTRA-CURRICULUM ACTIVITIES



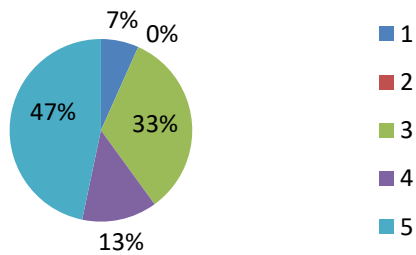
9) CANTEEN FACILITY



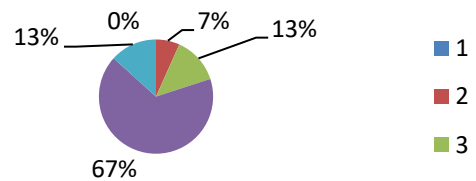
10) HOSTEL FACILITY



11) INTERACTION WITH ADMISSION DEPARTMENT



12) COMMUNICATION WITH COLLEGE ADMINISTRATORS/FACULTY MEMBERS




PRINCIPAL
EAST POINT COLLEGE OF PHARMACY
BIDARAHALLI, BANGALORE-49



East Point Campus, Jnana Prabha, Virgo Nagar Post,
Bengaluru – 560049, Karnataka

PARENTS FEEDBACK ABOUT ACADEMICS

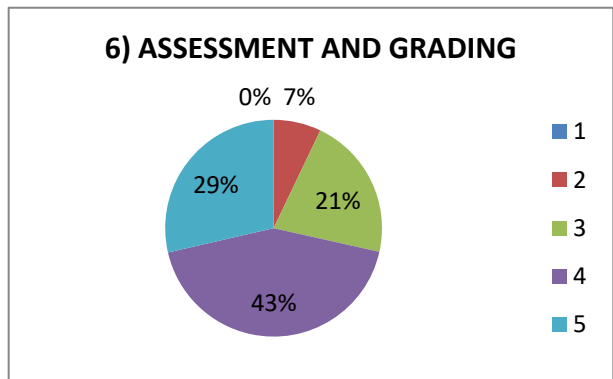
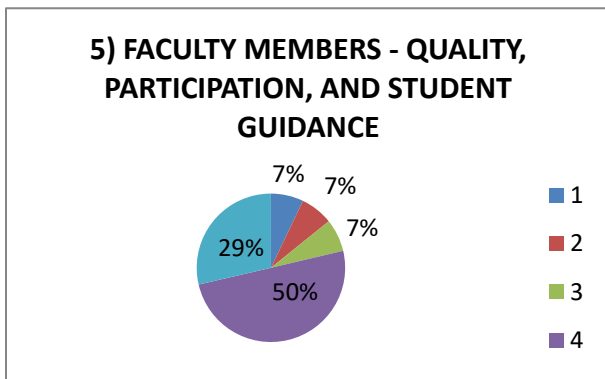
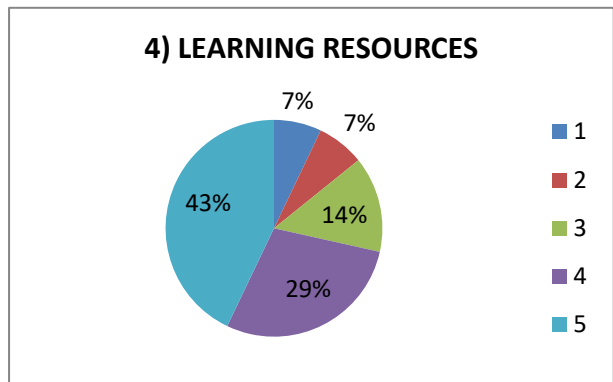
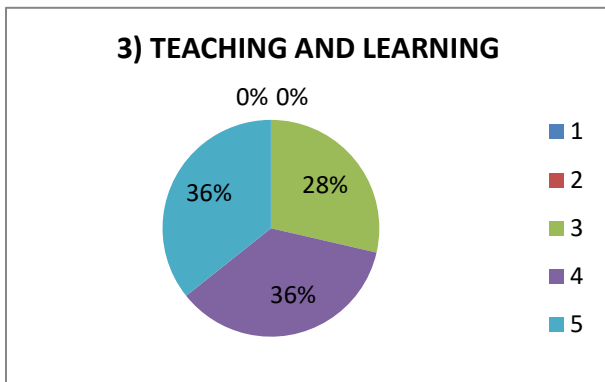
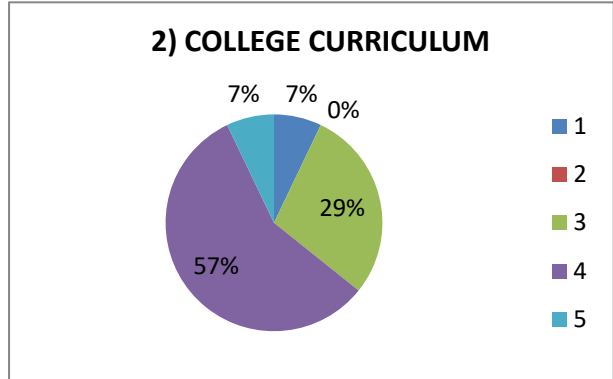
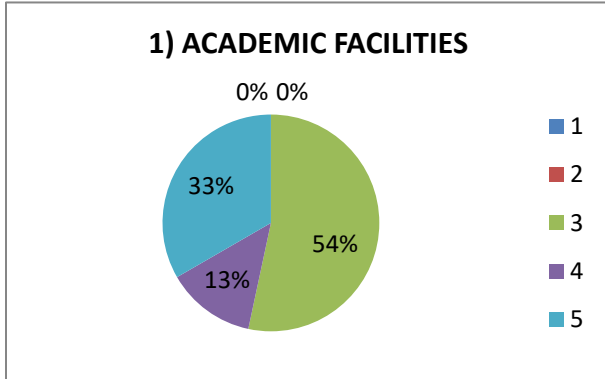
PARENTS FEEDBACK ABOUT ACADEMICS

Sl. No	Feedback Questions	Responses				
		1	2	3	4	5
1	Academic facilities	0%	0%	53.3%	13.3%	33.3%
2	College Curriculum	7.1%	0%	28.6%	57.1%	7.1%
3	Teaching and learning	0%	0%	28.6%	35.7%	35.7%
4	Learning Resources	7.1%	7.1%	14.3%	28.6%	48.9%
5	Faculty Members- Quality, Participation and students Guidance	7.1%	7.1%	7.1%	50%	28.6%
6	Assessment and grading	0%	7.1%	21.4%	42.9%	28.6%
7	Internship	0%	0%	23.1%	46.2%	30.8%
8	Training and Placement	0%	7.1%	14.3%	28.6%	50%
9	Opportunities beyond Curriculum	7.1%	7.1%	21.4%	35.7%	28.6%
10	Issuing of transcripts and academic documents	7.1%	7.1%	14.3%	50%	21.4%

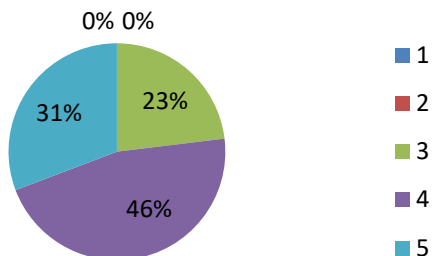
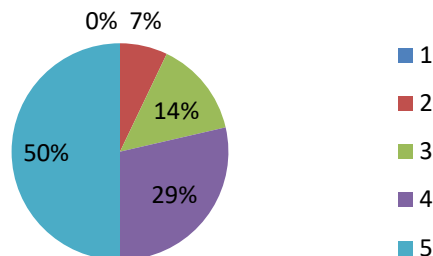
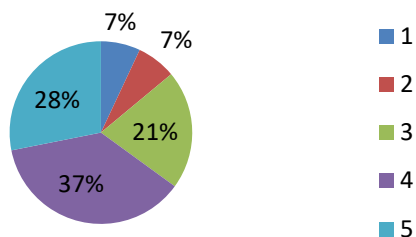
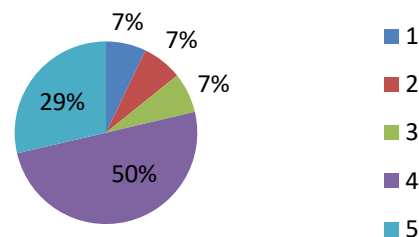


PRINCIPAL
EAST POINT COLLEGE OF PHARMACY
BIDARAHALLI, BANGALORE-49

Feedback Analysis: 2019-2020 (About Academics)




PRINCIPAL
EAST POINT COLLEGE OF PHARMACY
BIDARAHALLI, BANGALORE-49

7) INTERNSHIP

8) TRAINING AND PLACEMENTS

9) OPPURTUNITIES FOR LEARNING BEYOND CURRICULUM

10) ISSUING OF TRANSCRIPTS AND ACADEMIC DOCUMENTS


Sl. No	Feedback	Action taken
1	About college	The institution has provided good infrastructure, canteen, parking, sports ground and with good hostel facilities.
2	Academics	The institution has experienced faculties with good computer lab and all labs are equipped with updated equipment



PRINCIPAL
 EAST POINT COLLEGE OF PHARMACY
 BIDARAHALLI, BANGALORE-49



East Point Campus, Jnana Prabha, Virgo Nagar Post,
Bengaluru – 560049, Karnataka

FEEDBACK FROM EMPLOYER'S

FEEDBACK FROM EMPLOYER'S

Feedback from the employers for the Academic performance of the institution is collected. The feedback analysis is done and the analysis report is submitted the principal and then to the management to the for the necessary actions.

Sl. No	Feedback	Action taken
1	Conduciveness of the Syllabus for The Students Readiness Towards Recruitment	According to BOS of RGUHS the upgraded syllabus are in action and placement cell has been initiated
2	Provision of Inoculating Students Creativity in The Curriculum	Training programs and projects have been conducted as per the curriculum



PRINCIPAL
EAST POINT COLLEGE OF PHARMACY
BIDARAHALLI, BANGALORE-49