



East Point Campus, Jnana Prabha, Virgo Nagar Post,  
Bengaluru – 560049, Karnataka

**2020-2021**



East Point Campus, Jnana Prabha, Virgo Nagar Post,  
Bengaluru – 560049, Karnataka

## **FEEDBACK ANALYSIS AND ACTION TAKEN REPORT**

**ACADEMIC YEAR: 2020-2021**

### **OBJECTIVE OF FEED BACK:**

- The institution aims to offer the best possible environment and learning experience to encourage students to perform to their full potential for academic achievement.
- Stakeholders i.e., students, teachers, employers play an important role in the evaluation, development and enhancement of quality of this learning process.
- Hence, the institution collects feedback from all the stakeholders i.e., students, teachers, employers and alumni every academic in year on curriculum/syllabus to evaluate its service policies can be revised and wake changes as per stakeholders' requirements.

  
PRINCIPAL  
EAST POINT COLLEGE OF PHARMACY  
BIDARAHALLI, BANGALORE-49



East Point Campus, Jnana Prabha, Virgo Nagar Post,  
Bengaluru – 560049, Karnataka

# **FEEDBACK FROM STUDENTS**

## FEEDBACK FROM STUDENTS

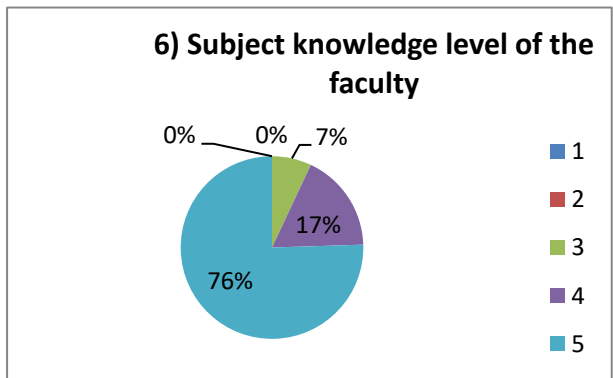
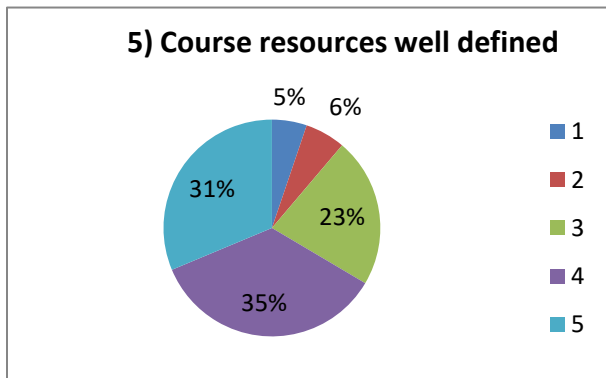
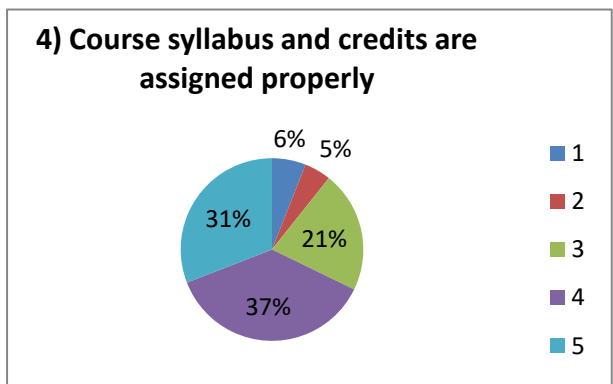
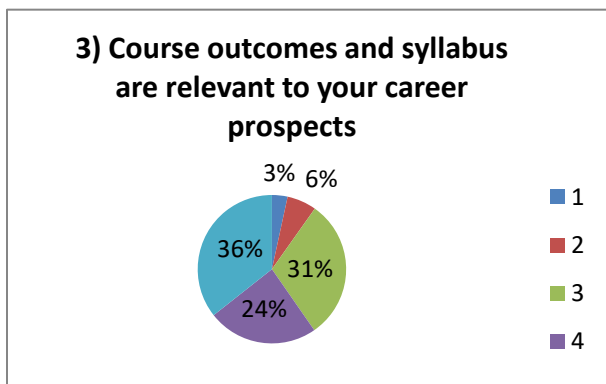
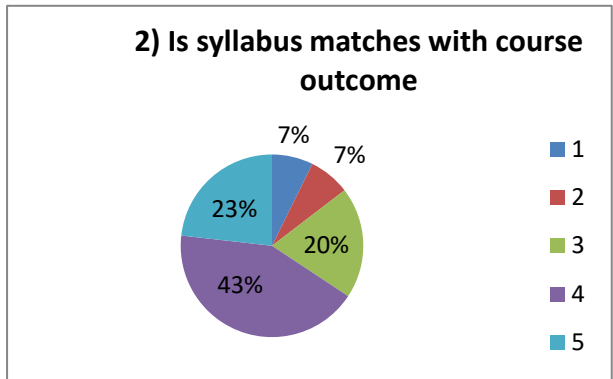
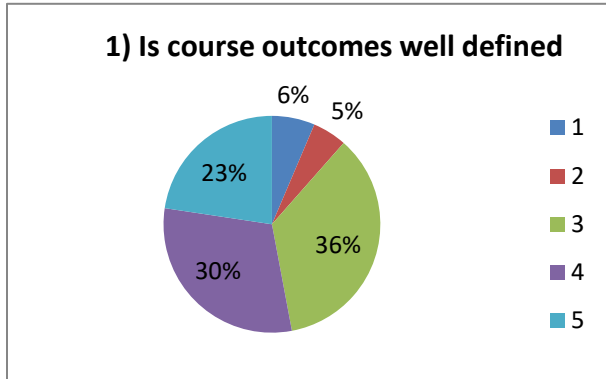
- The Students' Feedback on curriculum is designed to get formative feedback from students that can be used towards the improvements in the quality of course design and delivery, as well as student learning experiences.
- In the session 2020-2021, the college collected the feedback from students of different streams. The data is analyzed, and their suggestions are considered for possible incorporation in the curriculum.

### B. Pharmacy Even Semester

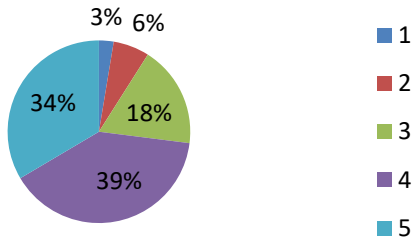
**Respondents: 234**

Sl. No	Feedback questions	Responses				
		1	2	3	4	5
1	Is course outcomes well defined	6.4%	5.1%	35.5%	30.3%	22.6%
2	Is syllabus matches with course outcome	7.3%	7.3%	19.7%	42.5%	23.2%
3	Course outcomes and syllabus are relevant to your career prospects	3.4%	6.4%	30.5%	24%	35.6%
4	Course syllabus and credits are assigned properly	6%	4.7%	21.5%	36.9%	30.9%
5	Course resources well defined	5.2%	6%	22.3%	35.2%	31.3%
6	Subject knowledge level of the faculty	0%	0%	7%	17.5%	75.5%
7	Whether faculty Encourage questions from students	2.6%	6.4%	18%	39.5%	33.5%
8	Is faculty inspire and guide students to explore more on topics taught	2.6%	6.9%	19.8%	36.2%	34.2%
9	Whether Activity based learning encouraged	4.3%	6%	24.9%	33.5%	31.3%
10	Is online learning encouraged	4.3%	5.2%	23.4%	34.2%	32.9%
11	Assessment questions are in line with course learning objectives	3.9%	6.1%	22.1%	33.8%	34.2%
12	Provides feedback on grading	3.4%	6.9%	22.4%	36.9%	31%
13	Faculty members grade students fairly	3.4%	6%	22.4%	35.8%	32.3%
14	Cleanliness of class room	3%	3%	23.2%	37.3%	33.5%
15	Whether laboratory condition are good	3.9%	6.1%	25.5%	30.3%	34.2%

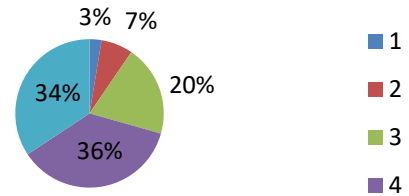
**Feedback Analysis: 2020-2021 (EVEN)**



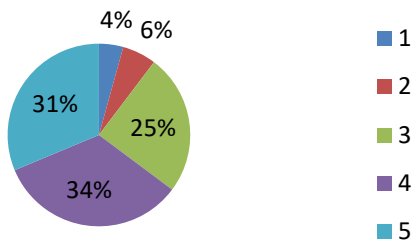
**7) Whether faculty Encourage questions from students**



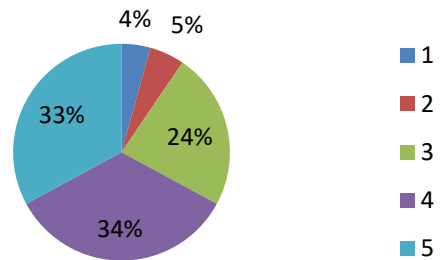
**8) Is faculty inspire and guide students to explore more on topics taught**



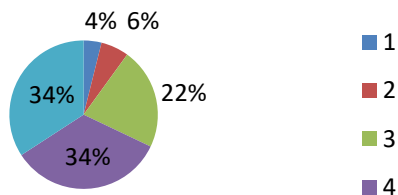
**9) Whether Activity based learning encouraged**



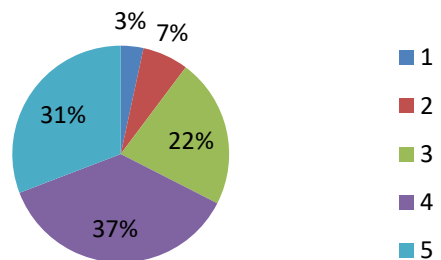
**10) Is online learning encouraged**

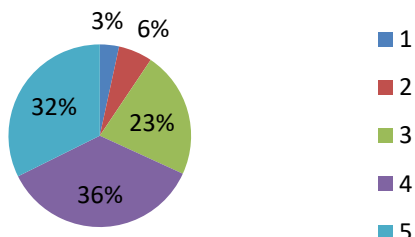
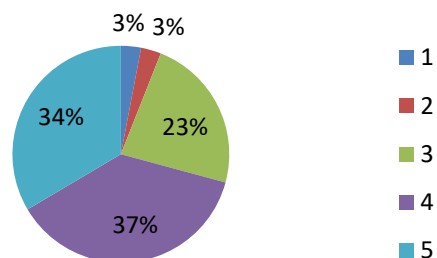
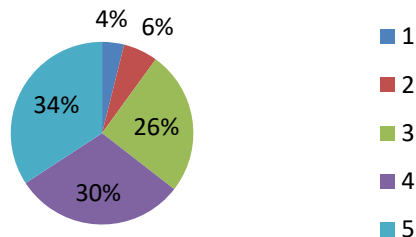


**11) Assessment questions are in line with course learning objectives**



**12) Provides feedback on grading**



**13) Faculty members grade students fairly**

**14) Cleanliness of class room**

**15) Whether laboratory condition are good**


Sl. No	Questionnaire	Feedback	Action taken
1	Is online learning is encouraged	Majority of the students wanted online mode	Requesting for procuring extra computers and softwares
2	Whether Laboratory equipment is in good condition	Few equipment are in good condition, few to be serviced	Service was done for upgrading the equipment's which were in poor condition
3	Whether staffs Providing feedback on grading	Majority of the students are not satisfied with the grading system.	Principal instructed the staffs to follow proper grading system



**PRINCIPAL**  
**EAST POINT COLLEGE OF PHARMACY**  
**BIDARAHALLI, BANGALORE-49**

**B. Pharm Odd Semester**
**Responses: 213**

Sl. No	Feedback questions	Responses				
		1	2	3	4	5
1	Is course outcomes well defined	2.9%	3.4%	25.6%	35.3%	32.9%
2	Is syllabus matches with course outcome	2.9%	2.9%	24.5%	38.5%	31.3%
3	Course outcomes and syllabus are relevant to your career prospects	2.4%	2.9%	27.5%	29%	38.2%
4	Course syllabus and credits are assigned properly	1.4%	4.3%	20.3%	39.6%	34.3%
5	Course resources well defined	2.4%	1%	23.3%	32%	41.3%
6	Subject knowledge level of the faculty	2.4%	2.4%	21.4%	37.2%	36.7%
7	Whether faculty Encourage questions from students	1.5%	2.4%	21.8%	35.4%	38.8%
8	Is faculty inspire and guide students to explore more on topics taught	1.5%	2.9%	22.8%	33%	39.8%
9	Whether Activity based learning encouraged	1%	4.3%	20.7%	33.7%	40.7%
10	Is online learning encouraged	1.5%	4.4%	22%	28.3%	43.9%
11	Assessment questions are in line with course learning objectives	3.4%	1.9%	23.3%	37.4%	34%
12	Provides feedback on grading	3.9%	4.3%	22.2%	31.4%	38.2%
13	Faculty members grade students fairly	1.5%	3.4%	21.4%	34.5%	39.3%
14	Cleanliness of class room	3.8%	2.4%	17.7%	34.4%	41.6%
15	Whether laboratory condition are good	2.4%	3.4%	23.3%	33%	37.9%

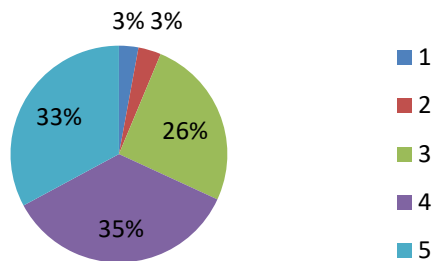


**PRINCIPAL**  
**EAST POINT COLLEGE OF PHARMACY**  
 BIDARAHALLI, BANGALORE-49

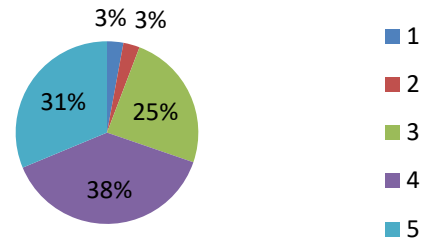


**Feedback Analysis: 2020- 2021(ODD)**

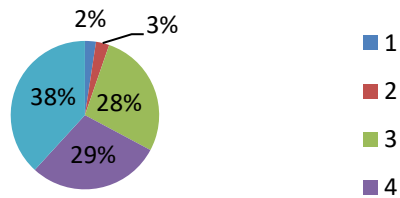
**1) Is course outcomes well defined**



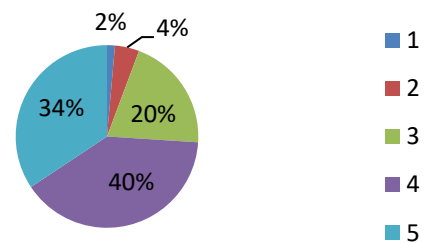
**2) Is syllabus matches with course outcome**



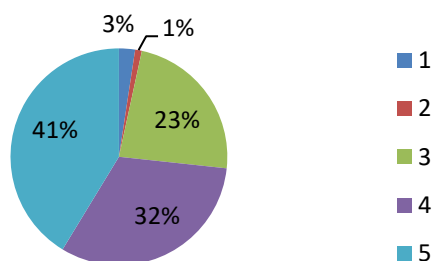
**3) Course outcomes and syllabus are relevant to your career prospects**



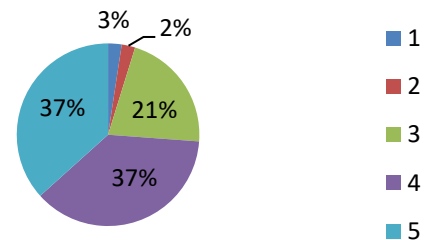
**4) Course syllabus and credits are assigned properly**



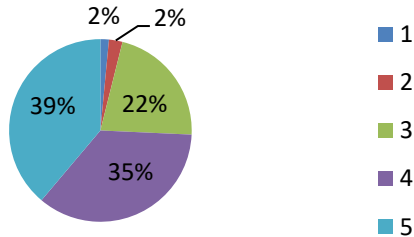
**5) Course resources well defined**



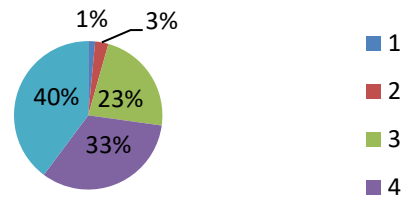
**6) Subject knowledge level of the faculty**



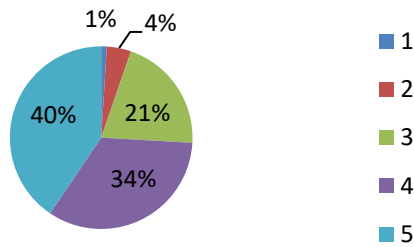
**7) Whether faculty Encourage questions from students**



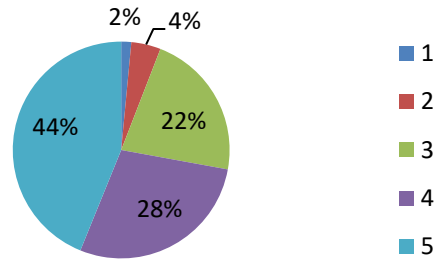
**8) Is faculty inspire and guide students to explore more on topics taught**



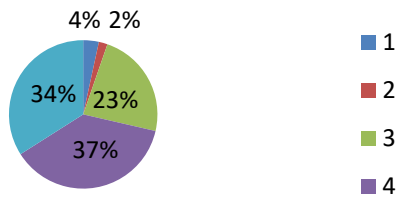
**9) Whether Activity based learning encouraged**



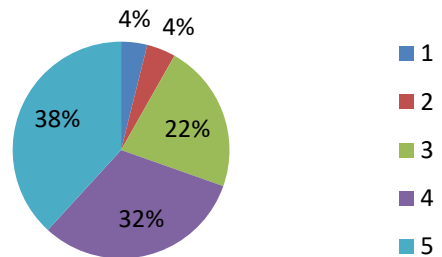
**10) Is online learning encouraged**



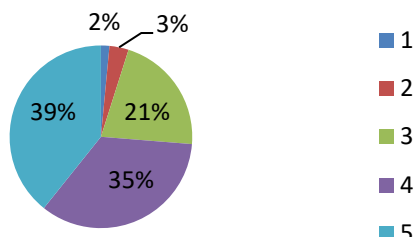
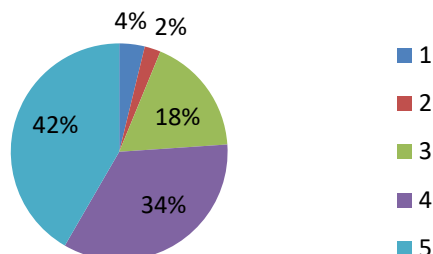
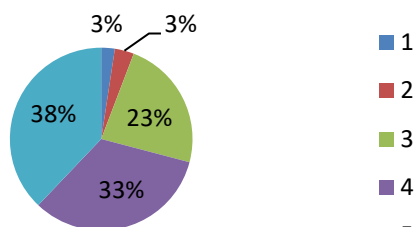
**11) Assessment questions are in line with course learning objectives**



**12) Provides feedback on grading**



**PRINCIPAL**  
**EAST POINT COLLEGE OF PHARMACY**  
**BIDARAHALLI, BANGALORE-49**

**13) Faculty members grade students fairly**

**14) Cleanliness of class room**

**15) Whether laboratory condition are good**


Sl. No	Questionnaire	Feedback	Action taken
1	Is online learning is encouraged	Majority of the students wanted online mode	Requesting for procuring extra computers and softwares.
2	Whether Laboratory equipment is in good condition	Few equipment is in good condition, few to be serviced	Service was done for upgrading the equipment's which were in poor condition
3	Whether staffs Providing feedback on grading	Majority of the students are not satisfied with the grading system.	Principal instructed the staffs to follow proper grading system

**Pharm D**

**Responses: 218**

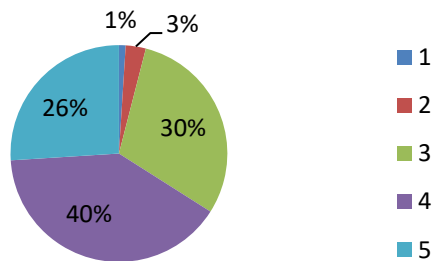
Sl. No	Feedback questions	Responses				
		1	2	3	4	5
1	Is course outcomes well defined	1%	3%	30%	40%	26%
2	Is syllabus matches with course outcome	1%	2%	13%	50%	26%
3	Course outcomes and syllabus are relevant to your career prospects	2%	3%	16%	42%	37%
4	Course syllabus and credits are assigned properly	1%	2%	21%	46%	30%
5	Course resources well defined	1%	2%	19%	41%	37%
6	Subject knowledge level of the faculty	2%	2%	26%	40%	30%
7	Whether faculty Encourage questions from students	2%	3%	21%	38%	36%
8	Is faculty inspire and guide students to explore more on topics taught	2%	2%	22%	44%	30%
9	Whether Activity based learning encouraged	1%	2%	20%	44%	33%
10	Is online learning encouraged	2%	3%	16%	47%	32%
11	Assessment questions are in line with course learning objectives	2%	2%	22%	42%	32%
12	Provides feedback on grading	1%	3%	17%	48%	31%
13	Faculty members grade students fairly	1%	2%	21%	36%	40%
14	Cleanliness of class room	1%	4%	13%	39%	43%
15	Whether laboratory condition are good	2%	4%	40%	32%	22%



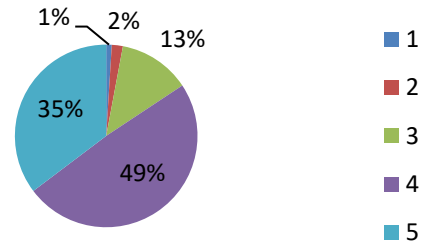
**PRINCIPAL**  
**EAST POINT COLLEGE OF PHARMACY**  
**BIDARAHALLI, BANGALORE-49**

**Feedback Analysis: 2020-2021**

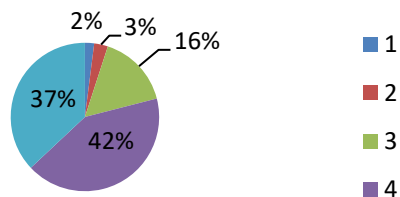
**1) Is course outcomes well defined**



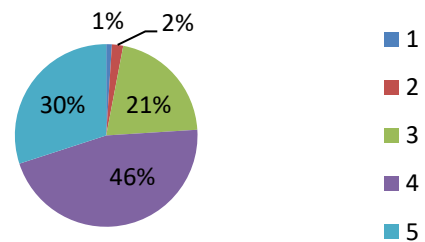
**2) Is syllabus matches with course outcome**



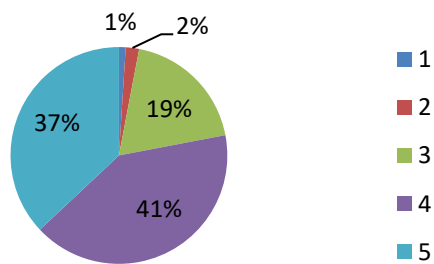
**3) Course outcomes and syllabus are relevant to your career prospects**



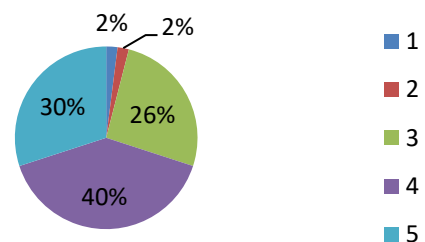
**4) Course syllabus and credits are assigned properly**



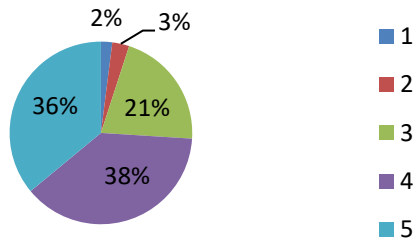
**5) Course resources well defined**



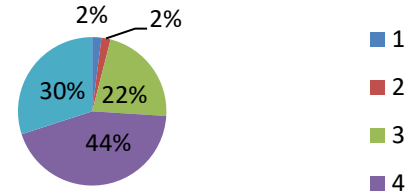
**6) Subject knowledge level of the faculty**



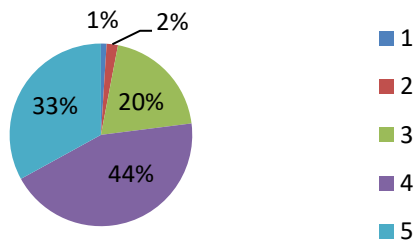
**7) Whether faculty Encourage questions from students**



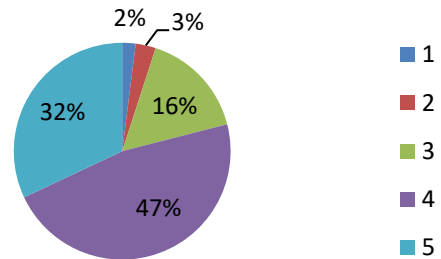
**8) Is faculty inspire and guide students to explore more on topics taught**



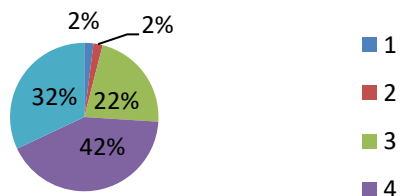
**9) Whether Activity based learning encouraged**



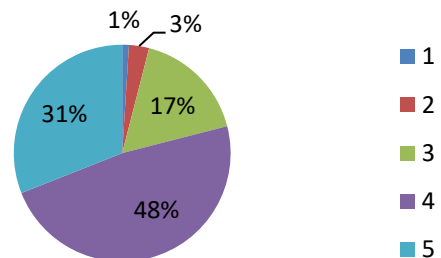
**10) Is online learning encouraged**

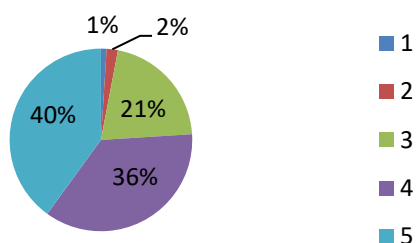
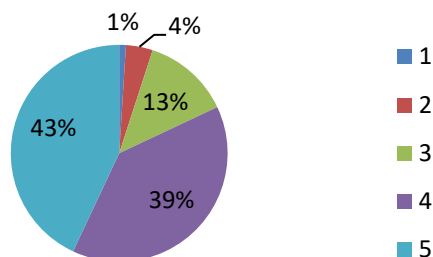
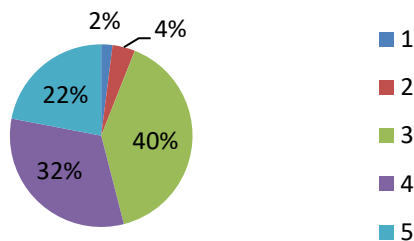


**11) Assessment questions are in line with course learning objectives**



**12) Provides feedback on grading**



**13) Faculty members grade students fairly**

**14) Cleanliness of class room**

**15) Laboratory equipment are in good condition**


Sl. No	Questionnaire	Feedback	Action taken
1	Cleanliness of Classroom	Some students complained classroom was dirty	Instructed the sweepers to clean the classroom twice the day
2	Whether assignment question help to learn how to apply the concepts	Students wanted exact questions based on university question paper	According to syllabus framed by the university assignment questions were helpful
3	Course outcomes and syllabus are relevant to your career prospects	Students suggested include more career-oriented programs	Career oriented seminars were organized

**M. Pharm (Pharmaceutics)**
**Responses: 14**

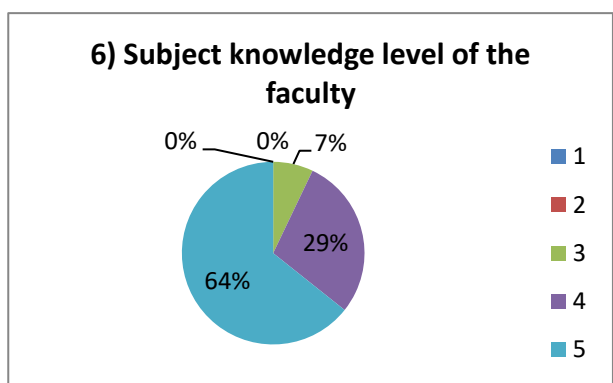
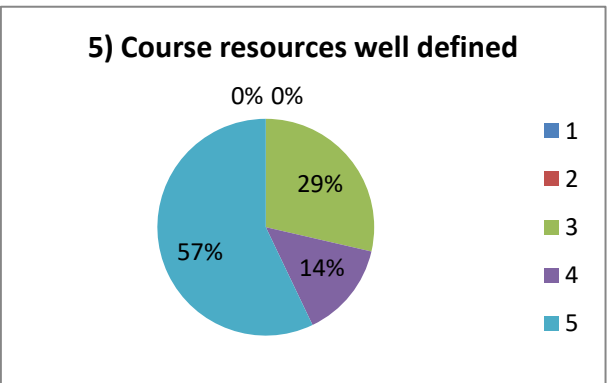
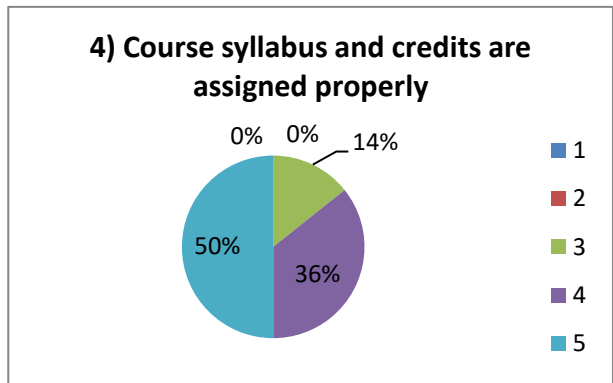
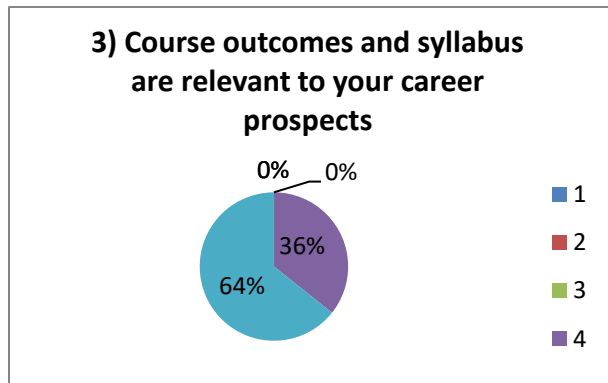
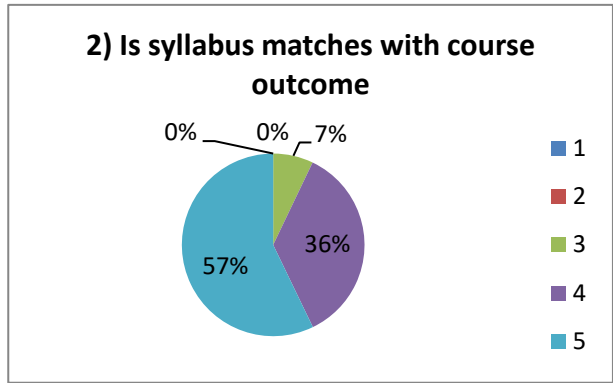
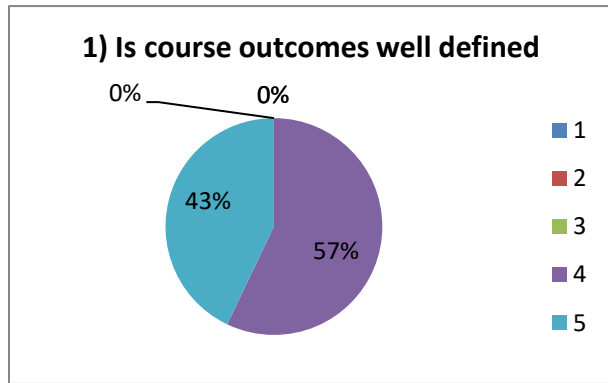
Sl. No	Feedback questions	Responses				
		1	2	3	4	5
1	Is course outcomes well defined	0%	0%	0%	57.1%	42.9%
2	Is syllabus matches with course outcome	0%	0%	7.1%	35.7%	57.1%
3	Course outcomes and syllabus are relevant to your career prospects	0%	0%	0%	35.7%	64.3%
4	Course syllabus and credits are assigned properly	0%	0%	14.3%	35.7%	50%
5	Course resources well defined	0%	0%	28.6%	14.3%	57.1%
6	Subject knowledge level of the faculty	0%	0%	7.1%	28.6%	64.3%
7	Whether faculty Encourage questions from students	0%	0%	14.3%	21.4%	64.3%
8	Is faculty inspire and guide students to explore more on topics taught	0%	0%	0%	64.3%	35.7%
9	Whether Activity based learning encouraged	0%	0%	7.1%	42.9%	50%
10	Is online learning encouraged	0%	0%	7.1%	28.6%	64.3%
11	Assessment questions are in line with course learning objectives	0%	0%	0%	64.3%	35.7%
12	Provides feedback on grading	0%	0%	0%	64.3%	35.7%
13	Faculty members grade students fairly	0%	0%	14.3%	50%	35.7%
14	Cleanliness of class room	0%	0%	0%	35.7%	64.3%
15	Whether laboratory condition are good	0%	7.7	0%	38.5%	53.8%



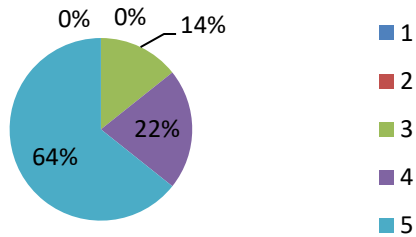
PRINCIPAL  
EAST POINT COLLEGE OF PHARMACY  
BIDARAHALLI, BANGALORE-49



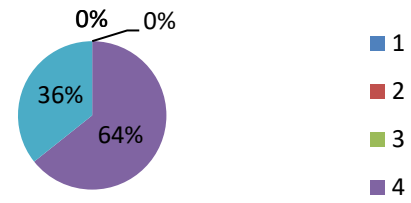
**Feedback Analysis: 2020-2021**



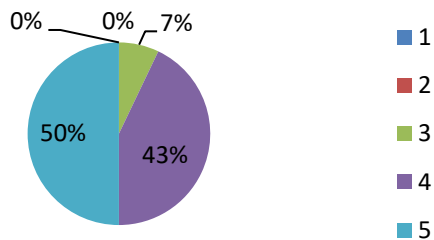
**7) Whether faculty Encourage questions from students**



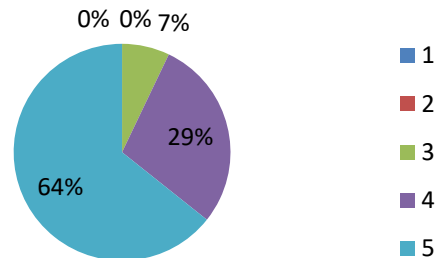
**8) Is faculty inspire and guide students to explore more on topics taught**



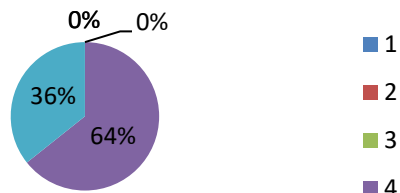
**9) Whether Activity based learning encouraged**



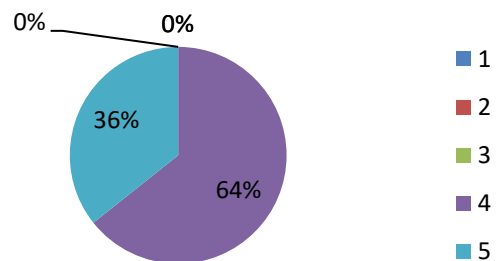
**10) Is online learning encouraged**

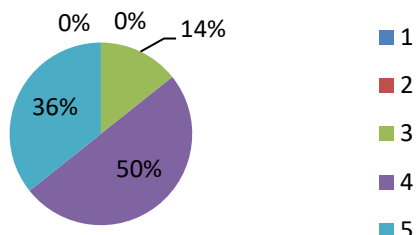
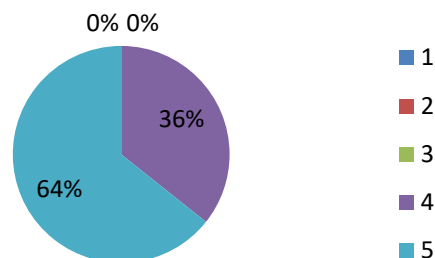
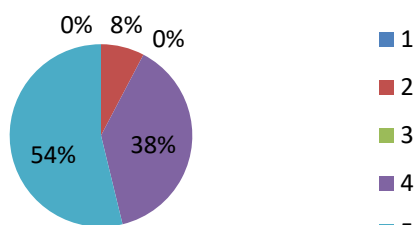


**11) Assessment questions are in line with course learning objectives**



**12) Provides feedback on grading**



**13) Faculty members grade students fairly**

**14) Cleanliness of class room**

**15) Whether laboratory condition are good**


Sl. No	Questionnaire	Feedback	Action taken
1	Whether Laboratory equipment is in good condition	Few equipment is in good condition, few to be serviced	Service was done for upgrading the equipment's which were in poor condition
2	Is online learning is encouraged	Majority of the students wanted online mode	Requesting for procuring extra computers and softwares.
3	Is activity based learning encouraged	Students were not satisfied with black board teaching	Seminars, assignments and flip classes were conducted and relevant video links were sent.

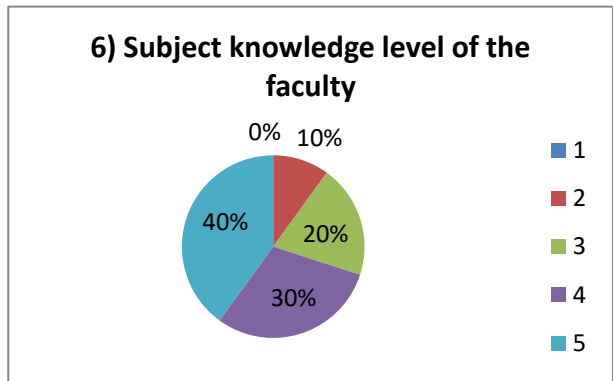
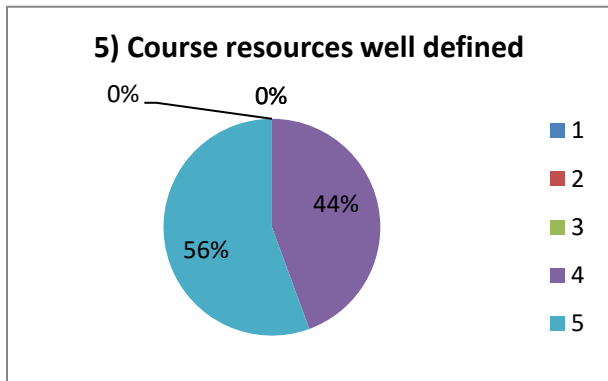
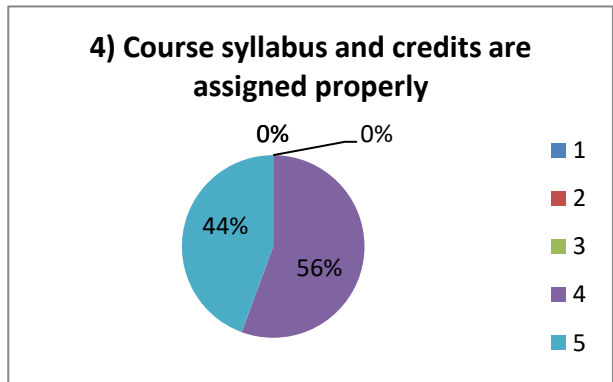
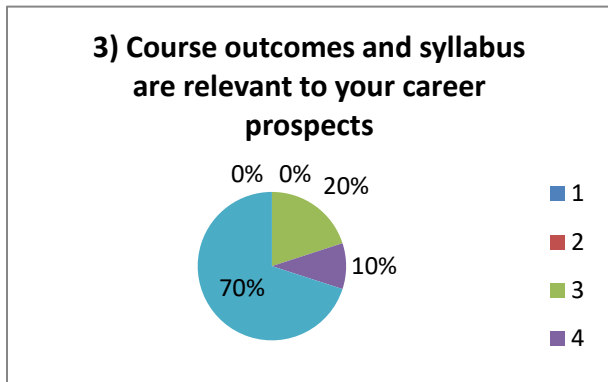
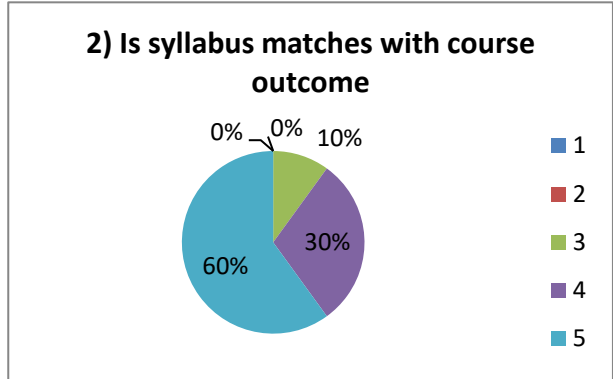
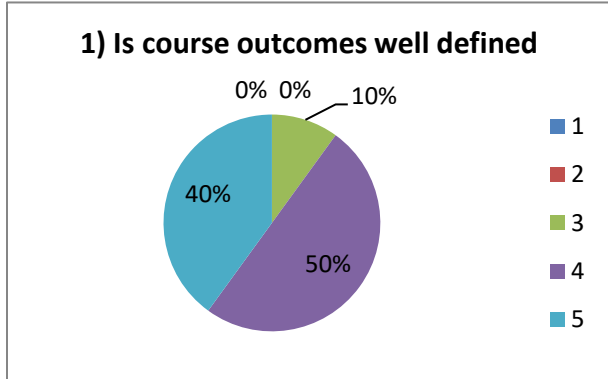
**M. Pharm (Pharmacology)**
**Responses: 10**

Sl. No	Feedback questions	Responses				
		1	2	3	4	5
1	Is course outcomes well defined	0%	0%	10%	50%	40%
2	Is syllabus matches with course outcome	0%	0%	10%	30%	60%
3	Course outcomes and syllabus are relevant to your career prospects	0%	0%	20%	10%	70%
4	Course syllabus and credits are assigned properly	0%	0%	0%	55.6%	44.4%
5	Course resources well defined	0%	0%	0%	44.4%	55.6%
6	Subject knowledge level of the faculty	0%	10%	20%	30%	40%
7	Whether faculty Encourage questions from students	0%	0%	0%	33.3%	66.7%
8	Is faculty inspire and guide students to explore more on topics taught	0%	0%	0%	50%	50%
9	Whether Activity based learning encouraged	0%	0%	0%	50%	50%
10	Is online learning encouraged	0%	0%	0%	30%	70%
11	Assessment questions are in line with course learning objectives	0%	0%	10%	40%	50%
12	Provides feedback on grading	0%	0%	20%	20%	60%
13	Faculty members grade students fairly	0%	0%	10%	30%	60%
14	Cleanliness of class room	0%	0%	10%	30%	60%
15	Whether laboratory condition are good	0%	0%	30%	20%	50%

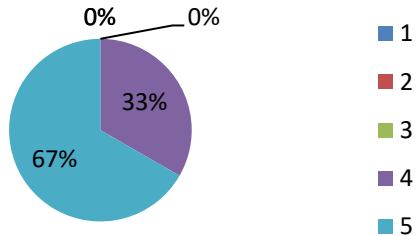


**PRINCIPAL**  
**EAST POINT COLLEGE OF PHARMACY**  
**BIDARAHALLI, BANGALORE-49**

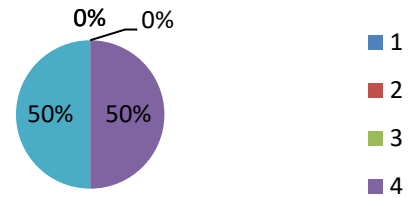
**Feedback Analysis: 2020-2021**



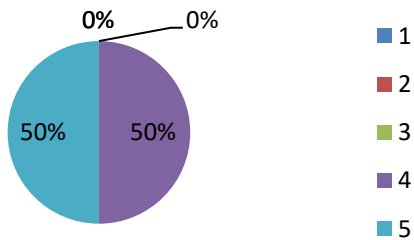
**7) Whether faculty Encourage questions from students**



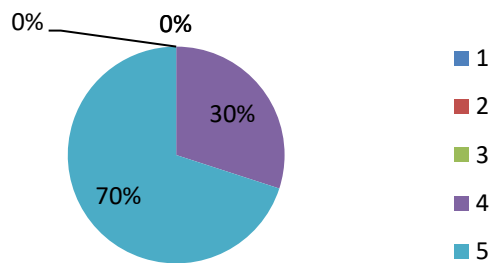
**8) Is faculty inspire and guide students to explore more on topics taught**



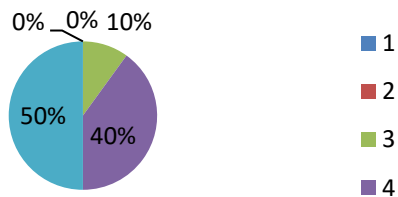
**9) Whether Activity based learning encouraged**



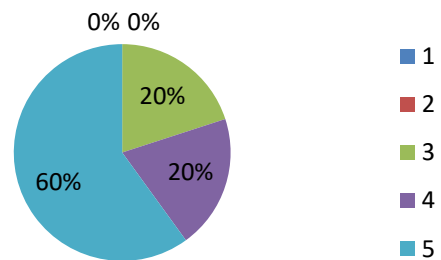
**10) Is online learning encouraged**

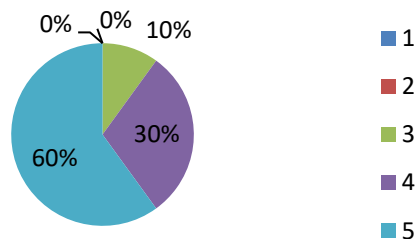
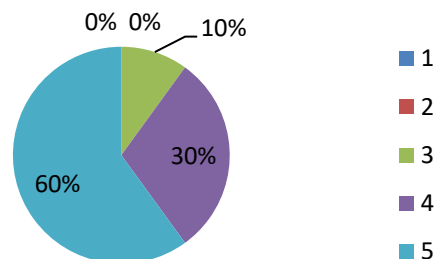
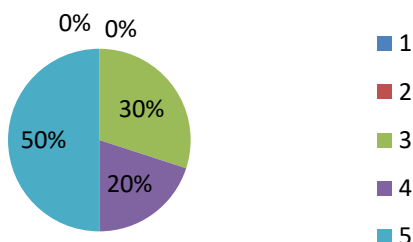


**11) Assessment questions are in line with course learning objectives**



**12) Provides feedback on grading**



**13) Faculty members grade students fairly**

**14) Cleanliness of class room**

**15) Whether laboratory condition are good**


Sl. No	Questionnaire	Feedback	Action taken
1	Whether Laboratory equipment is in good condition	Few equipment is in good condition, few to be serviced	Service was done for upgrading the equipment's which were in poor condition
2	Whether Assessment questions are in line with course learning objectives	Most of the questions were not in order	HOD instructed the staffs to follow proper CO-PO procedure.
3	Is activity-based learning encouraged	Students were not satisfied with black board teaching	Seminars, assignments and flip classes were conducted and relevant video links were sent.
4	Cleanliness of class room	Some students complained classroom was dirty	Instructed the sweepers to clean the classroom twice the day



East Point Campus, Jnana Prabha, Virgo Nagar Post,  
Bengaluru – 560049, Karnataka

# **FEEDBACK FROM FACULTY**



### FEEDBACK FROM FACULTY

Feedback from the faculties for the Ambience and the Academic performance of the institution is collected through online mode (Google form). The feedback analysis is done and the analysis report is submitted to the principal and then to the management for the necessary actions.

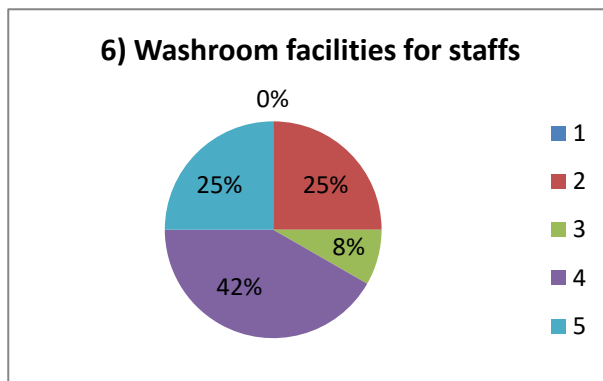
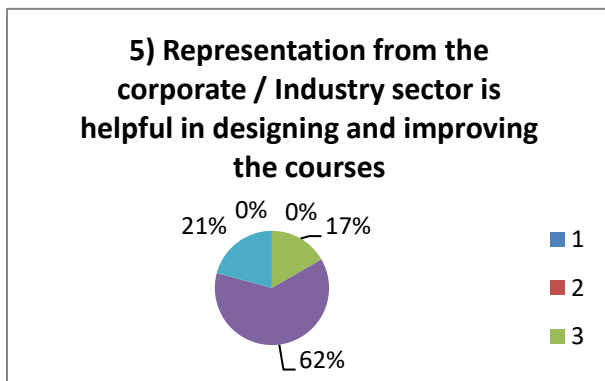
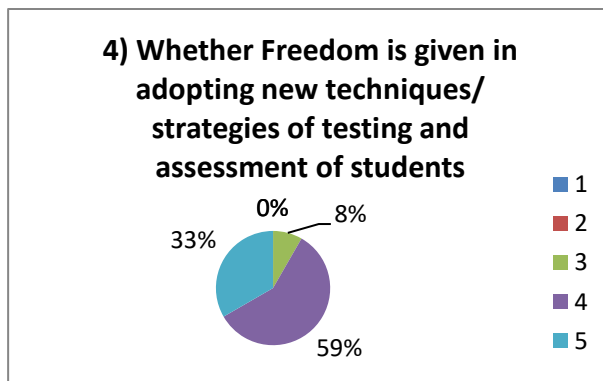
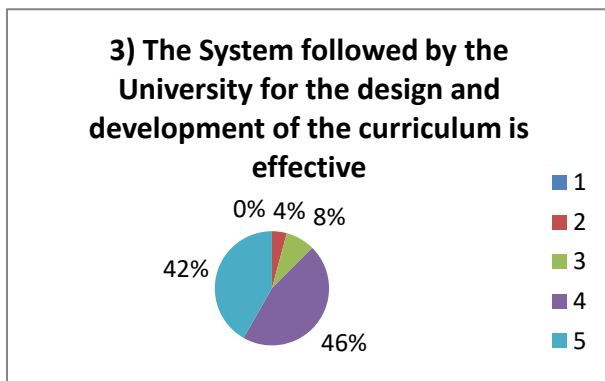
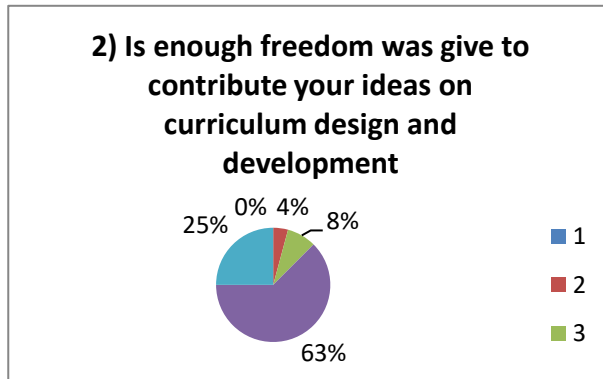
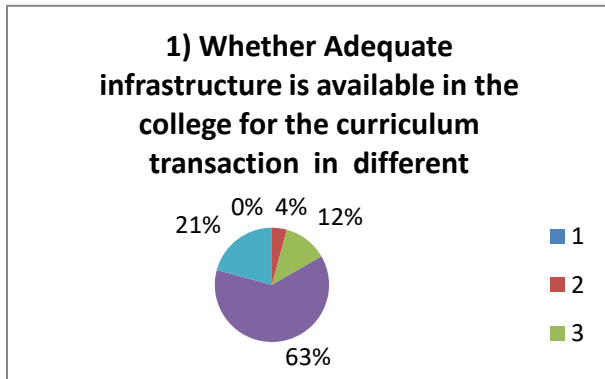
**Responses: 24**

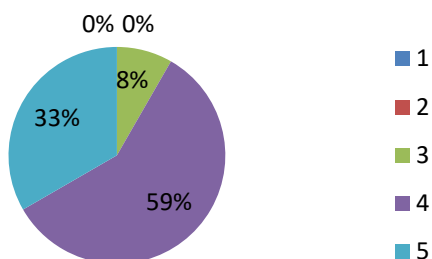
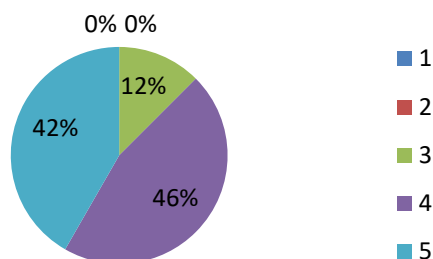
Sl. No	Feedback questions	Responses				
		1	2	3	4	5
1	Whether Adequate infrastructure is available in the college for the curriculum transaction in different Modes	0%	4.2%	12.5%	62.5%	20.8%
2	Is enough freedom was given to contribute your ideas on curriculum design and development	0%	4.2%	8.3%	62.5%	25%
3	The System followed by the University for the design and development of the curriculum is effective.	0%	4.2%	8.3%	45.8%	41.7%
4	Whether Freedom is given in adopting new techniques/ strategies of testing and assessment of students	0%	0%	8.3%	58.3%	33.3%
5	Representation from the corporate / Industry sector is helpful in designing and improving the courses	0%	0%	16.7%	62.5%	20.8%
6	Washroom facilities for staffs	0%	25%	8.3%	41.7%	25%
7	Parking facilities for staffs	0%	0%	8.3%	58.3%	33.3%
8	Whether College timing is good	0%	0%	12.5%	45.8%	41.7%



**PRINCIPAL**  
**EAST POINT COLLEGE OF PHARMACY**  
 BIDARAHALLI, BANGALORE-49

### Feedback Analysis: 2020-2021



**7) Parking facilities for staffs**

**8) Whether College timing is good**


Sl. No	Questionnaire	Feedback	Action taken
1	Whether Adequate infrastructure is available in the college for the curriculum transaction in different modes	Most of the staffs suggested to adapt new technologies for teaching	IQAC instructed faculty to include ICT facilities such as video clips, 3D presentations to make teaching learning students centric.
2	Is Representation from the corporate / Industry sector is helpful in designing and improving the courses	Staffs suggested to include corporate / Industry sector in designing and improving the courses	Suggestions forwarded to placement cell as it decided to include more companies in campus in designing and improving the courses



**PRINCIPAL**  
**EAST POINT COLLEGE OF PHARMACY**  
**BIDARAHALLI, BANGALORE-49**



East Point Campus, Jnana Prabha, Virgo Nagar Post,  
Bengaluru – 560049, Karnataka

# **FEEDBACK FROM ALUMNI**

## FEEDBACK FROM ALUMNI

Feedback from the alumni for the Ambience and the Academic performance of the institution is collected through online mode (Google form). The feedback analysis is done and the analysis report is submitted to the principal and then to the management for the necessary actions.

### Responses: 16

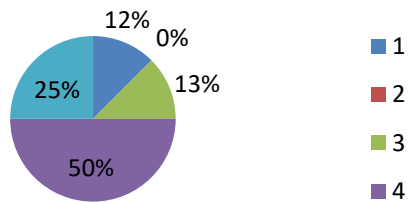
Sl. No	Feedback questions	Responses				
		1	2	3	4	5
1	College location and campus	12.5%	0%	12.5%	50%	25%
2	Student facilities and amenities	6.3%	6.3%	18.8%	31.3%	37.5%
3	Program Curriculum	6.3%	0%	31.3%	25%	37.5%
4	Teaching and Learning Resources	6.3%	0%	25%	43.8%	25%
5	Opportunities for co-curricular activities	0%	12.5%	12.5%	56.3%	18.8%
6	Opportunities for extra- curricular activities	6.3%	0%	37.5%	37.5%	18.8%
7	Internship opportunities	0%	6.3%	12.5%	37.5%	43.8%
8	Placement opportunities	0%	0%	25%	56.3%	18.8%
9	Innovation and entrepreneurship opportunities	0%	0%	18.8%	50%	31.3%
10	Encouragement for Higher studies	0%	0%	25%	25%	50%



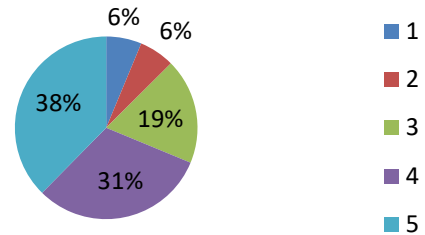
**PRINCIPAL**  
**EAST POINT COLLEGE OF PHARMACY**  
 BIDARAHALLI, BANGALORE-49

**Feedback Analysis: 2019-2020**

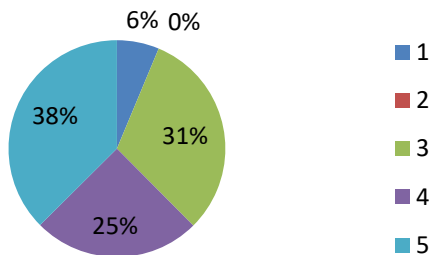
**1) COLLEGE LOCATION AND CAMPUS**



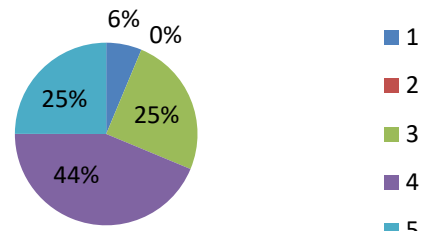
**2) STUDENT FACILITIES AND AMINITIES**



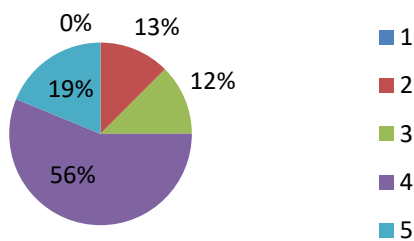
**3) PROGRAM CURRICULUM**



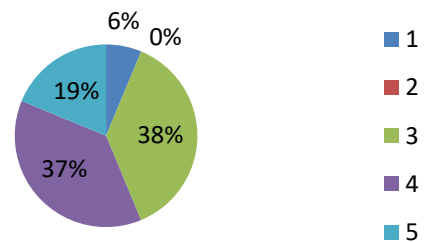
**4) TEACHING AND LEARNING RESOURCES**

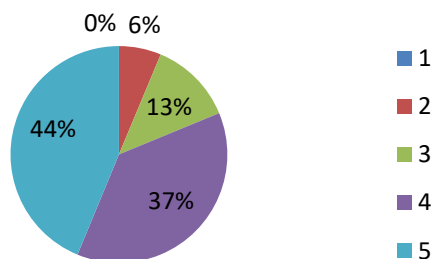
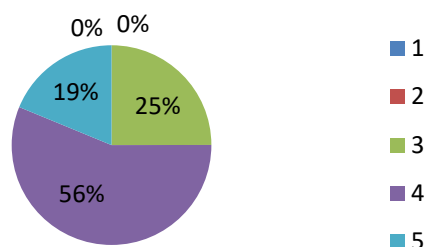
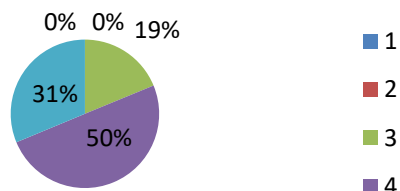
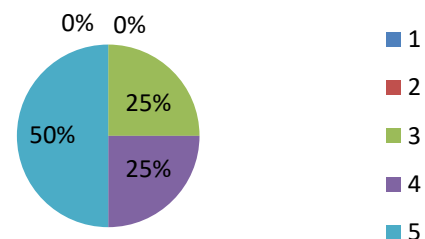


**5) OPPURTUNITIES FOR CO-CURRICULUM ACTIVITIES**



**6) OPPURTUNITIES FOR EXTRA-CURRICULUM ACTIVITES**



**7) INTERNSHIP OPPURTUNITIES**

**8) PLACEMENT OPPURTUNITIES**

**9) INNOVATION AND ENTREPRENEURSHIP OPPURTUNITIES**

**10) ENCOURAGEMENT FOR HIGHER STUDIES**


Sl. No	Feedback	Action taken
1	Innovation and Entrepreneurship Opportunities	IIC Cell Has Been Constituted and Is Active
2	Placement Opportunities	Placement Cell Has Initiated Placement Drive and Approached Various Companies for Placement of Students



PRINCIPAL  
 EAST POINT COLLEGE OF PHARMACY  
 BIDARAHALLI, BANGALORE-49



East Point Campus, Jnana Prabha, Virgo Nagar Post,  
Bengaluru – 560049, Karnataka

# **PARENTS FEEDBACK ABOUT COLLEGE**



## PARENTS FEEDBACK ABOUT COLLEGE

Feedback from the parents for the Ambience and the Academic performance of the institution is collected through online mode (Google form). The feedback analysis is done and the analysis report is submitted to the principal and then to the management for the necessary actions.

**Responses: 11**

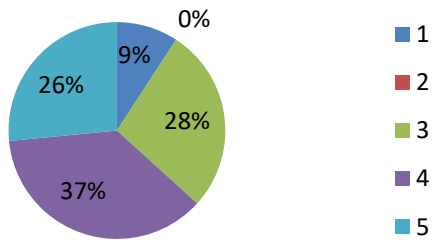
Sl. No	Feedback questions	Responses				
		1	2	3	4	5
1	College Location	9.1%	0%	27.3%	36.4%	27.3%
2	College campus	0%	9.1%	27.3%	36.4%	27.3%
3	College Building	0%	9.1%	27.3%	45.5%	18.2%
4	Transport Facility	18.2%	0%	36.4%	18.2%	27.3%
5	Parking Facility	9.1%	0%	18.2%	27.3%	45.5%
6	Security	0%	18.2%	9.1%	45.5%	27.3%
7	Co-Curricular Activities	0%	27.3%	0%	0%	72.7%
8	Extra-Curricular Activities	9.1%	0%	27.3%	27.3%	36.4%
9	Canteen Facilities	0%	9.1%	36.4%	36.4%	18.2%
10	Hostel Facilities	9.1%	0%	18.2%	36.4%	36.4%
11	Interaction with admission department	9.1%	0%	27.3%	36.4%	27.3%
12	Communication with college administrators / faculty members	0%	0%	27.3%	27.3%	45.5%



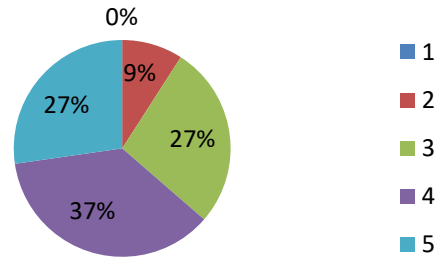
**PRINCIPAL**  
**EAST POINT COLLEGE OF PHARMACY**  
**BIDARAHALLI, BANGALORE-49**

**Feedback Analysis: 2019-2020 (About College)**

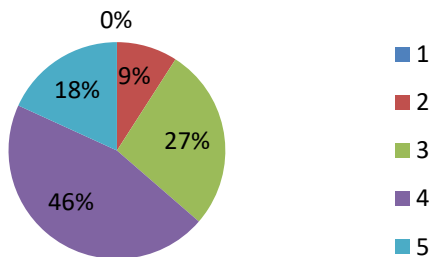
**1) COLLEGE LOCATION**



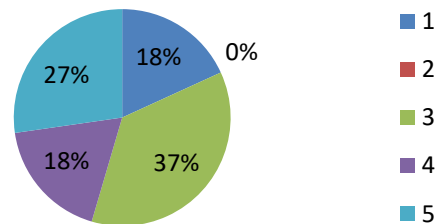
**2) COLLEGE CAMPUS**



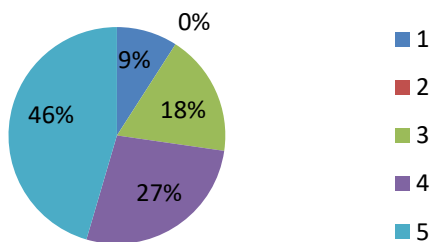
**3) COLLEGE BUILDINGS**



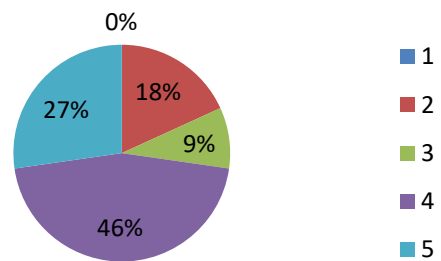
**4) TRANSPORT FACILITY**



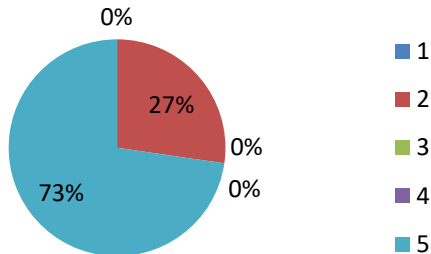
**5) PARKING FACILITY**



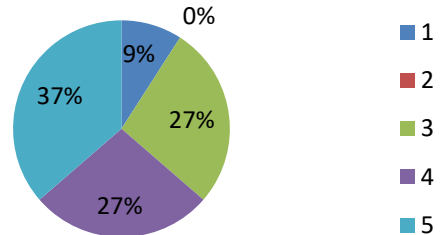
**6) SECURITY**



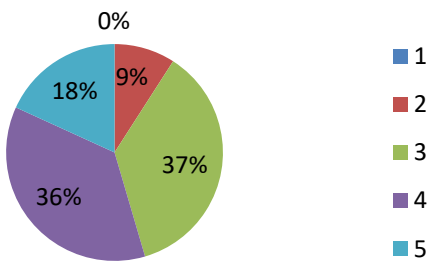
**7) CO-CURRICULAR ACTIVITIES**



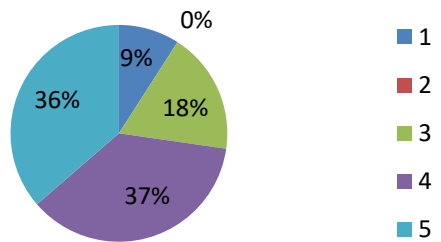
**8) EXTRA-CURRICULUM ACTIVITIES**



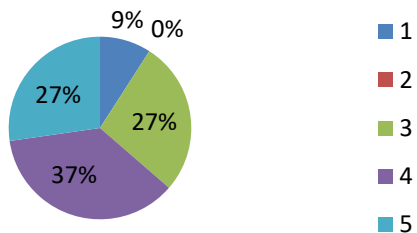
**9) CANTEEN FACILITY**



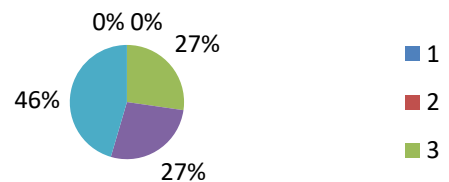
**10) HOSTEL FACILITY**



**11) INTERACTION WITH  
ADMISSION DEPARTMENT**



**12) COMMUNICATION WITH  
COLLEGE  
ADMINISTRATORS/FACULTY  
MEMBERS**





East Point Campus, Jnana Prabha, Virgo Nagar Post,  
Bengaluru – 560049, Karnataka

# **PARENTS FEEDBACK ABOUT ACADEMICS**

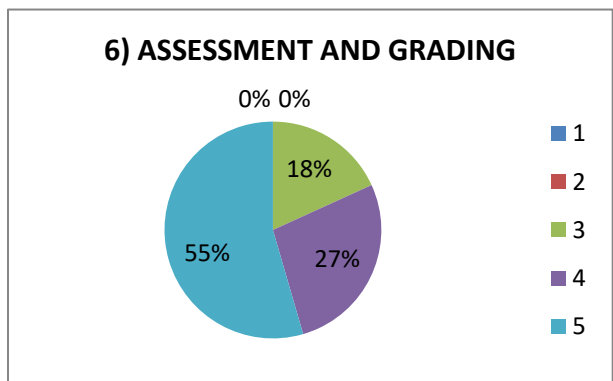
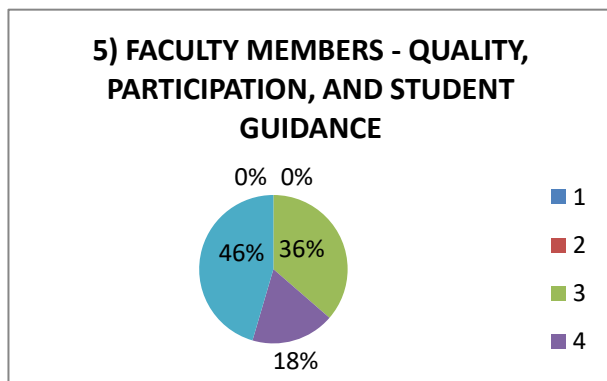
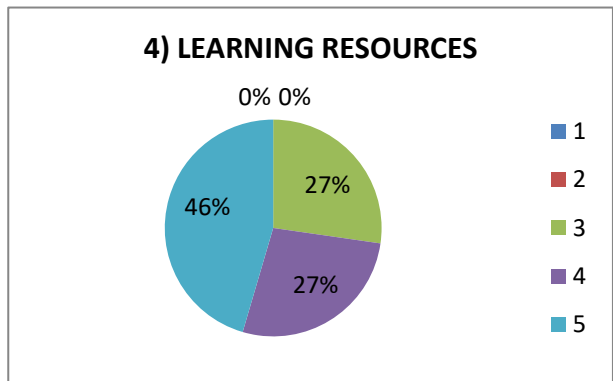
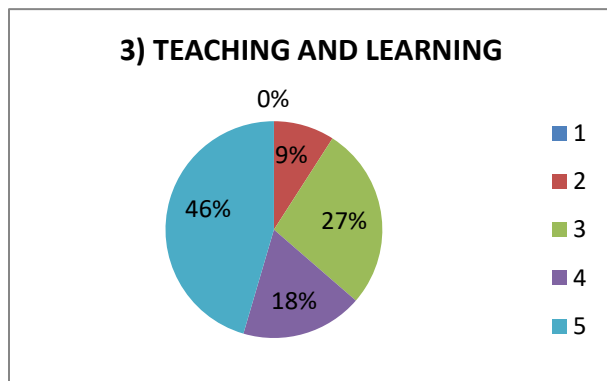
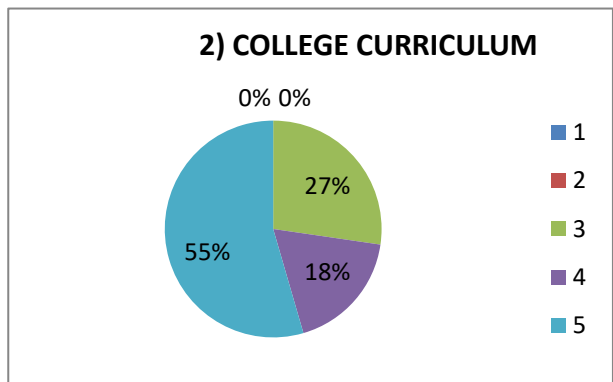
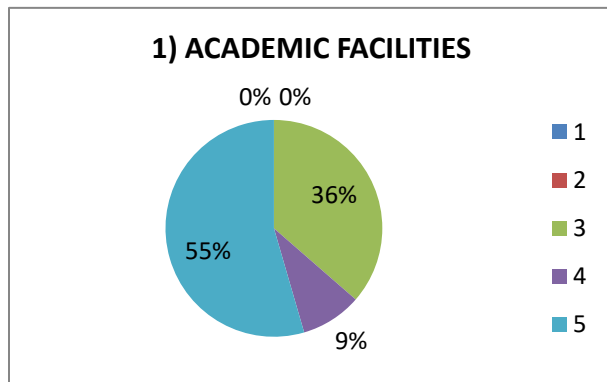
## PARENTS FEEDBACK ABOUT ACADEMICS

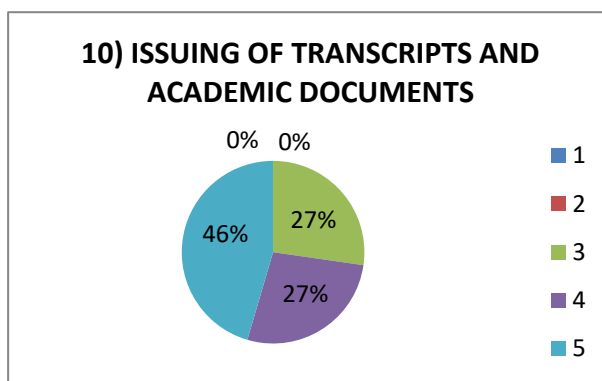
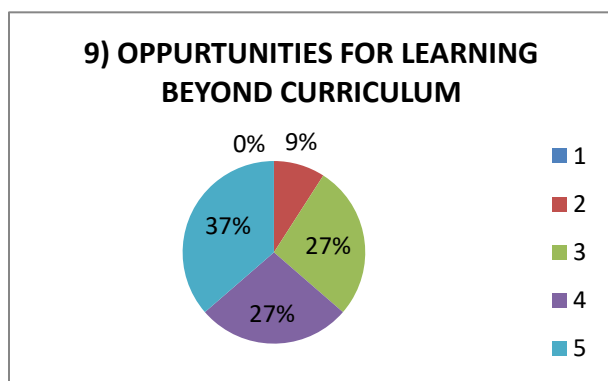
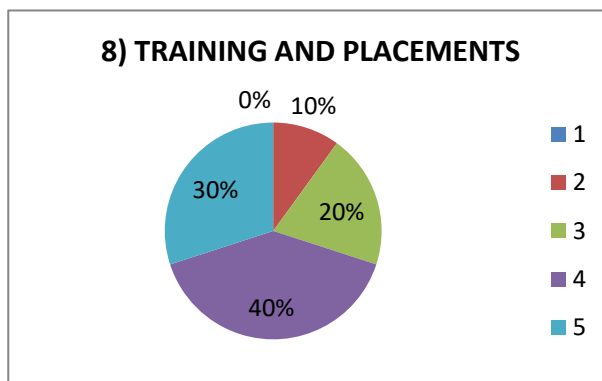
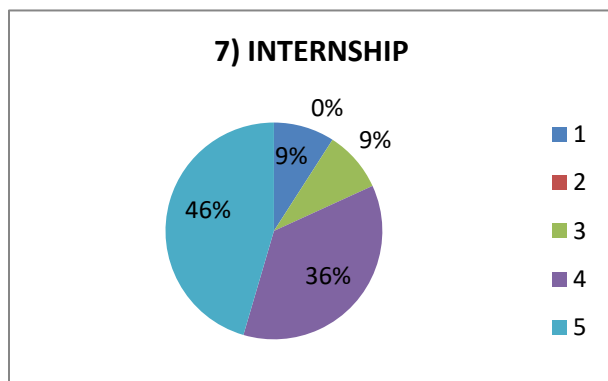
Sl. No	Feedback questions	Responses				
		1	2	3	4	5
1	Academic facilities	0%	0%	36.4%	9.1%	54.4%
2	College Curriculum	0%	0%	27.3%	18.2%	54.5%
3	Teaching and learning	0%	9.1%	27.3%	18.2%	45.5%
4	Learning Resources	0%	0%	27.3%	27.3%	45.5%
5	Faculty Members- Quality, Participation and students Guidance	0%	0%	36.4%	18.2%	45.5%
6	Assessment and grading	0%	0%	18.2%	27.3%	54.5%
7	Internship	9.1%	0%	9.1%	36.4%	45.5%
8	Training and Placement	0%	10%	20%	30%	40%
9	Opportunities beyond Curriculum	0%	9.1%	27.3%	27.3%	36.4%
10	Issuing of transcripts and academic documents	0%	0%	27.3%	27.3%	45.5%



PRINCIPAL  
EAST POINT COLLEGE OF PHARMACY  
BIDARAHALLI, BANGALORE-49

**Feedback Analysis: 2020-2021 (About Academics)**





Sl. No	Feedback	Action taken
1	About college	The institution has provided good infrastructure, canteen, parking, sports ground and with good hostel facilities.
2	Academics	The institution has experienced faculties with good computer lab and all labs are equipped with updated equipment



East Point Campus, Jnana Prabha, Virgo Nagar Post,  
Bengaluru – 560049, Karnataka

# **FEEDBACK FROM EMPLOYER'S**



## FEEDBACK FROM EMPLOYER'S

Feedback from the employers for the Academic performance of the institution is collected. The feedback analysis is done and the analysis report is submitted the principal and then to the management to the for the necessary actions.

Sl. No	Feedback	Action taken
1	The medical director of the hospital suggested the pharmacists to follow the rules and regulations as per MCI	We informed the pharmacists abide the rules of MCI
2	Provision Of Inoculating Students Creativity in The Curriculum	Training programs and projects have been conducted as per the curriculum.



PRINCIPAL  
EAST POINT COLLEGE OF PHARMACY  
BIDARAHALLI, BANGALORE-49