



East Point Campus, Jnana Prabha, Virgo Nagar Post,  
Bengaluru – 560049, Karnataka

**2021-2022**



East Point Campus, Jnana Prabha, Virgo Nagar Post,  
Bengaluru – 560049, Karnataka

## **FEEDBACK ANALYSIS AND ACTION TAKEN REPORT**

**ACADEMIC YEAR: 2021-2022**

### **OBJECTIVE OF FEED BACK:**

- The institution aims to offer the best possible environment and learning experience to encourage students to perform to their full potential for academic achievement.
- Stakeholders i.e., students, teachers, employers play an important role in the evaluation, development and enhancement of quality of this learning process.
- Hence, the institution collects feedback from all the stakeholders i.e., students, teachers, employers and alumni every academic in year on curriculum/syllabi to evaluate its service policies can be revised and wake changes as per stakeholders' requirements.



**PRINCIPAL  
EAST POINT COLLEGE OF PHARMACY  
BIDARAHALLI, BANGALORE-49**



East Point Campus, Jnana Prabha, Virgo Nagar Post,  
Bengaluru – 560049, Karnataka

# **FEEDBACK FROM STUDENTS**

## FEEDBACK FROM STUDENTS

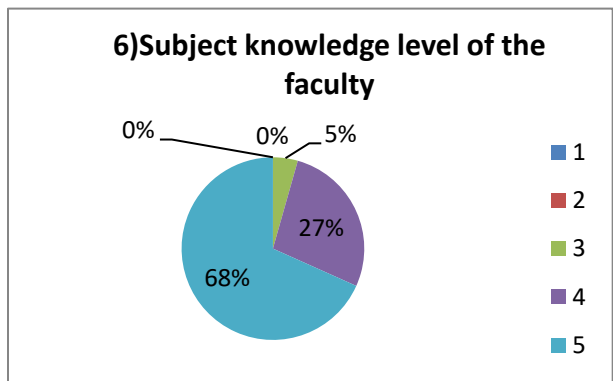
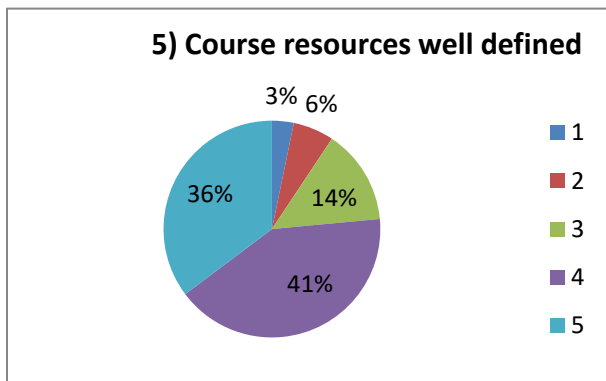
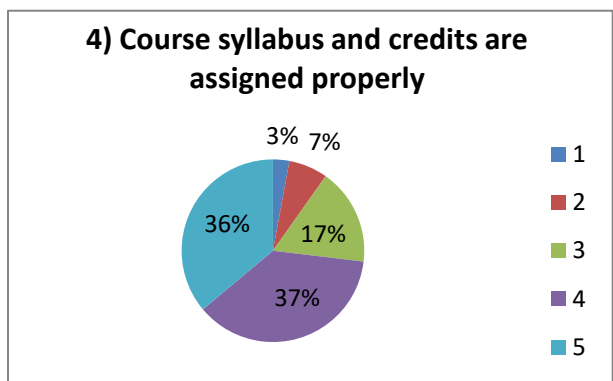
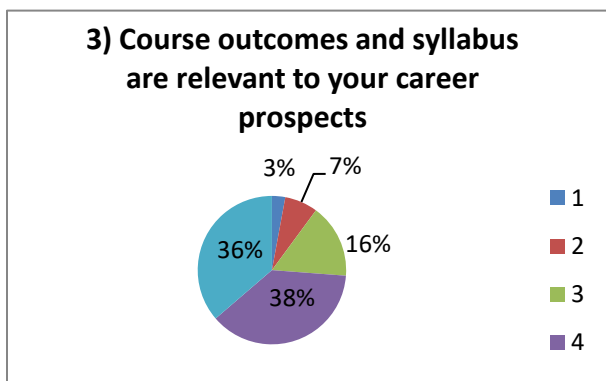
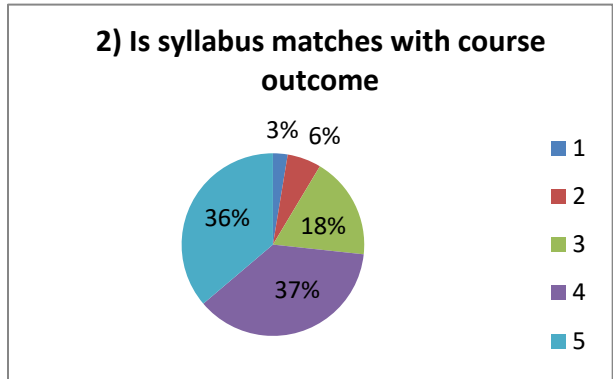
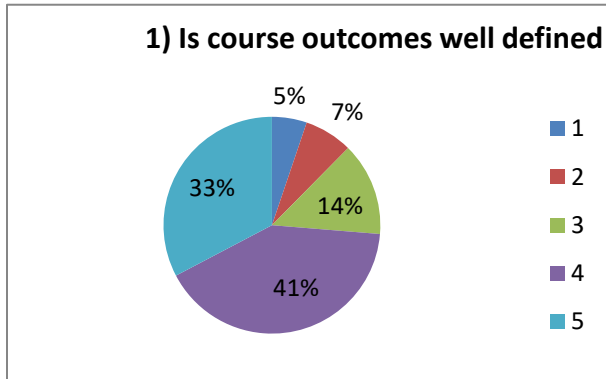
- The Students' Feedback on curriculum is designed to get formative feedback from students that can be used towards the improvements in the quality of course design and delivery, as well as student learning experiences.
- In the session 2021-2022, the college collected the feedback from students of different streams. The data is analyzed, and their suggestions are considered for possible incorporation in the curriculum.

### B. Pharmacy Even Semester

**Respondents: 348**

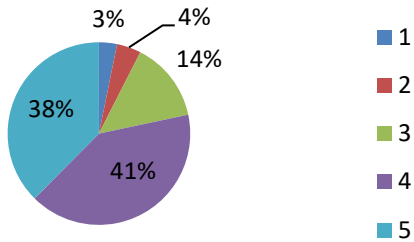
Sl. No	Feedback questions	Responses				
		1	2	3	4	5
1	Is course outcomes well defined	5.2%	7.2%	13.9%	41%	32.7%
2	Is syllabus matches with course outcome	2.6%	6%	18.1%	37.1%	36.2%
3	Course outcomes and syllabus are relevant to your career prospects	2.9%	7.2%	16.1%	37.5%	36.3%
4	Course syllabus and credits are assigned properly	2.9%	6.9%	17.1%	37%	36.1%
5	Course resources well defined	3.25%	6.1%	14.2%	41.3%	35.3%
6	Subject knowledge level of the faculty			4.4%	27.3%	68.3%
7	Whether faculty Encourage questions from students	3.2%	4.3%	14.2%	40.8%	37.6%
8	Is faculty inspire and guide students to explore more on topics taught	4.3%	5.2%	14.2%	37.9%	38.4%
9	Whether Activity based learning encouraged	3.8%	6.1%	13.9%	36.2%	40%
10	Is online learning encouraged	3.2%	4.9%	16%	39.2%	38.6%
11	Assessment questions are in line with course learning objectives	4.4%	5.2%	16.3%	37.8%	36.3%
12	Provides feedback on grading	4.3%	4.6%	16.5%	36.1%	38.4%
13	Faculty members grade students fairly	4.1%	3.2%	19.8%	36.9%	36%
14	Cleanliness of class room	3.5%	4.9%	16.8%	34.2%	40.6%
15	Whether laboratory condition are good	4.3%	3.8%	15%	35.8%	41%

**Feedback Analysis: 2021-2022 (EVEN)**

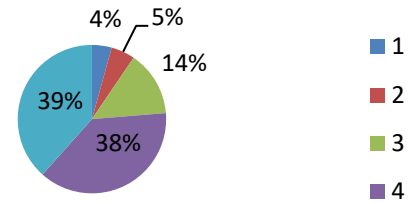


  
**PRINCIPAL**  
**EAST POINT COLLEGE OF PHARMACY**  
**BIDARAHALLI, BANGALORE-49**

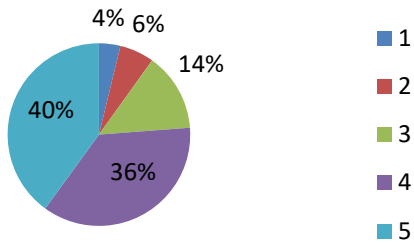
**7) Whether faculty Encourage questions from students**



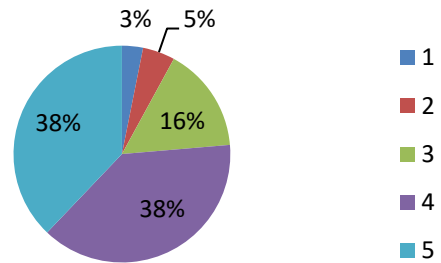
**8) Is faculty inspire and guide students to explore more on topics taught**



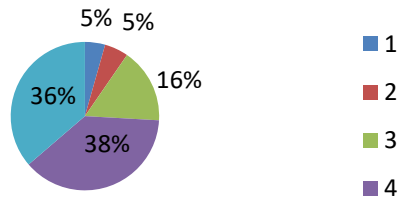
**9) Whether Activity based learning encouraged**



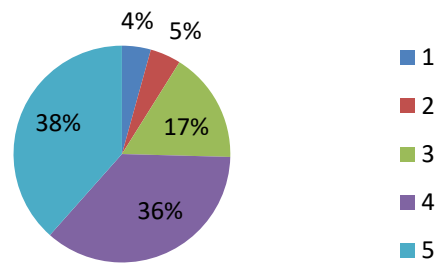
**10) Is online learning encouraged**

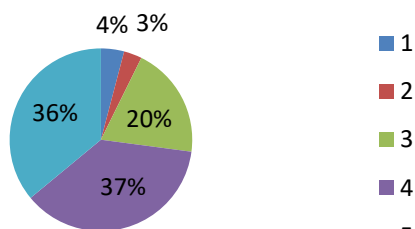
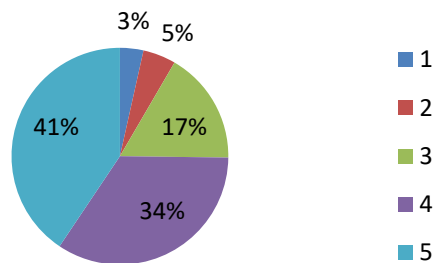
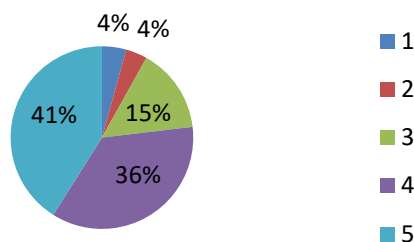


**11) Assessment questions are in line with course learning objectives**



**12) Provides feedback on grading**



**13) Faculty members grade students fairly**

**14) Cleanliness of class room**

**15) Whether laboratory condition are good**



Sl. No	Questionnaire	Feedback	Action taken
1	Is online learning is encouraged	Majority of the students wanted online mode	Computers and related Software's have been procured for online teaching methods
2	Whether Laboratory equipment is in good condition	Few equipment is in good condition, few to be serviced	Service was done for upgrading the equipment's which were in poor condition



PRINCIPAL  
 EAST POINT COLLEGE OF PHARMACY  
 BIDARAHALLI, BANGALORE-49

**B. Pharm Odd Semester**
**Responses: 330**

Sl. No	Feedback questions	Responses				
		1	2	3	4	5
1	Is course outcomes well defined	0.6%	4.3%	17.7%	46.2%	31.2%
2	Is syllabus matches with course outcome	0.9%	3.3%	17.6%	43.2%	35%
3	Course outcomes and syllabus are relevant to your career prospects	0.9%	2.4%	16.1%	41.2%	39.4%
4	Course syllabus and credits are assigned properly	1.2%	3.1%	15.3%	39.3%	41.1%
5	Course resources well defined	1.5%	3.7%	13.7%	45.4%	35.7%
6	Subject knowledge level of the faculty	0.6%	2.5%	14.7%	36.5%	45.7%
7	Whether faculty Encourage questions from students	2.1%	2.7%	13.1%	40.1%	41.9%
8	Is faculty inspire and guide students to explore more on topics taught	0.9%	3.4%	17.5%	36.2%	42%
9	Whether Activity based learning encouraged	1.8%	3.6%	13.6%	41.5%	39.4%
10	Is online learning encouraged	2.4%	2.4%	14.1%	40.1%	41%
11	Assessment questions are in line with course learning objectives	2.1%	2.7%	13.7%	41.5%	39.9%
12	Provides feedback on grading	1.8%	3.4%	14.3%	39%	41.5%
13	Faculty members grade students fairly	2.4%	3.4%	15.5%	37.5%	41.2%
14	Cleanliness of class room	3.1%	3.6%	14.2%	40%	38.2%
15	Whether laboratory condition are good	3.3%	4.8%	14.5%	36.7%	40.6%

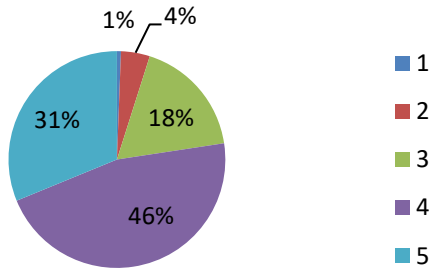


**PRINCIPAL**  
**EAST POINT COLLEGE OF PHARMACY**  
**BIDARAHALLI, BANGALORE-49**

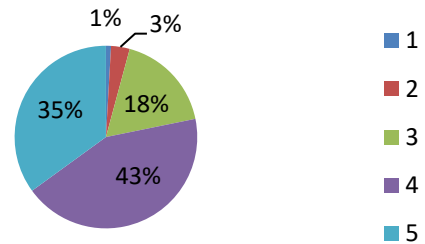


**Feedback Analysis: 2021-2022 (ODD)**

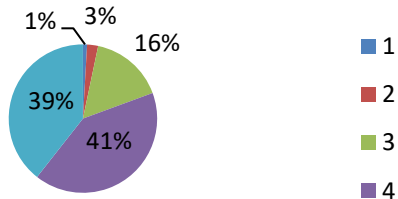
**1) Is course outcomes well defined**



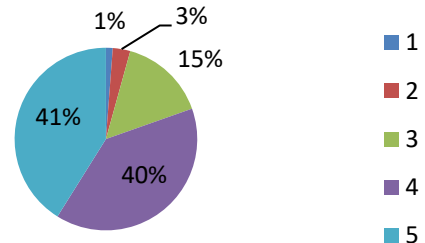
**2) Is syllabus matches with course outcome**



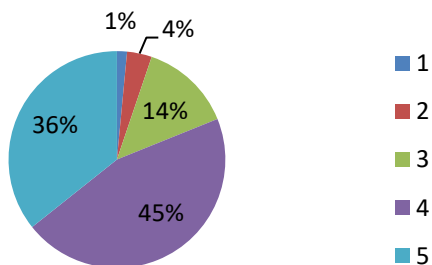
**3) Course outcomes and syllabus are relevant to your career prospects**



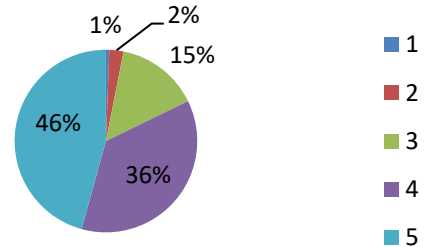
**4) Course syllabus and credits are assigned properly**



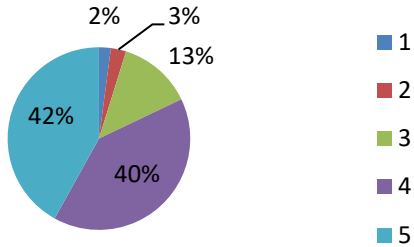
**5) Course resources well defined**



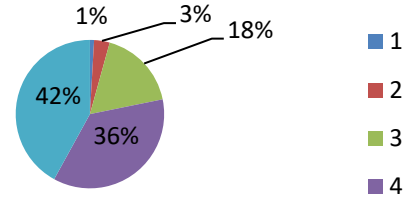
**6) Subject knowledge level of the faculty**



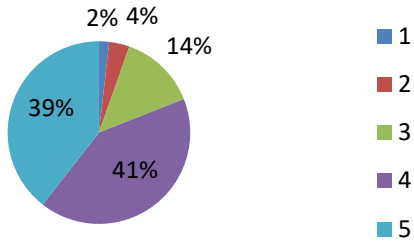
**7) Whether faculty Encourage questions from students**



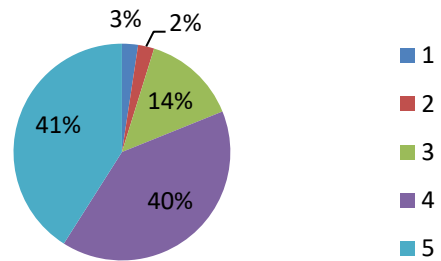
**8) Is faculty inspire and guide students to explore more on topics taught**



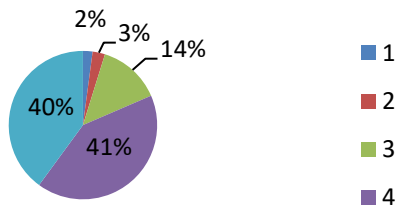
**9) Whether Activity based learning encouraged**



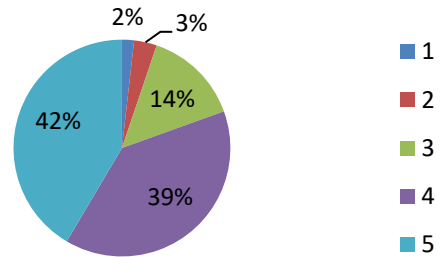
**10) Is online learning encouraged**



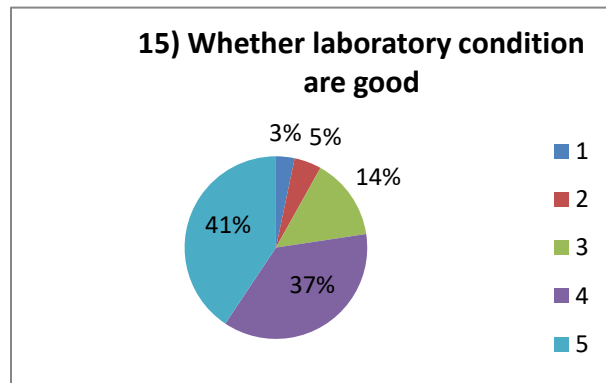
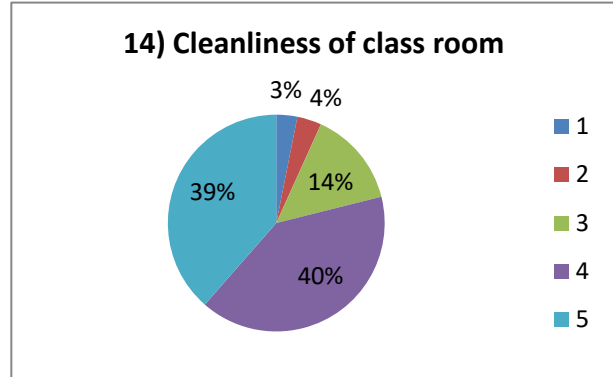
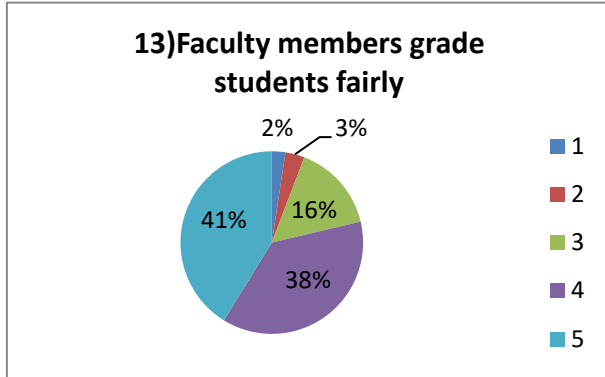
**11) Assessment questions are in line with course learning objectives**



**12) Provides feedback on grading**



  
**PRINCIPAL**  
**EAST POINT COLLEGE OF PHARMACY**  
**BIDARAHALLI, BANGALORE-49**



Sl. No	Questionnaire	Feedback	Action taken
1	Is online learning is encouraged	Majority of the students wanted online mode	Computers and related Software's have been procured for online teaching methods
2	Whether Laboratory equipment is in good condition	Few equipment are in good condition, few to be serviced	Service was done for upgrading the equipment's which were in poor condition

  
**PRINCIPAL**  
**EAST POINT COLLEGE OF PHARMACY**  
**BIDARAHALLI, BANGALORE-49**

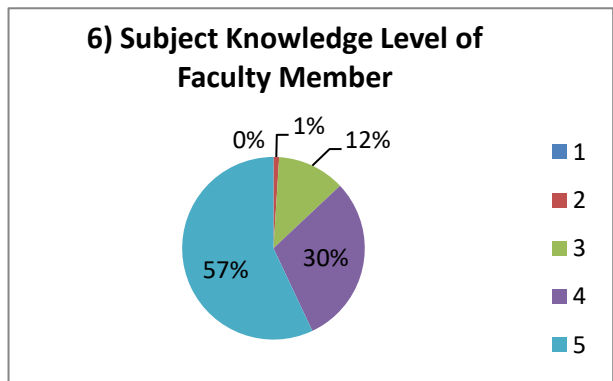
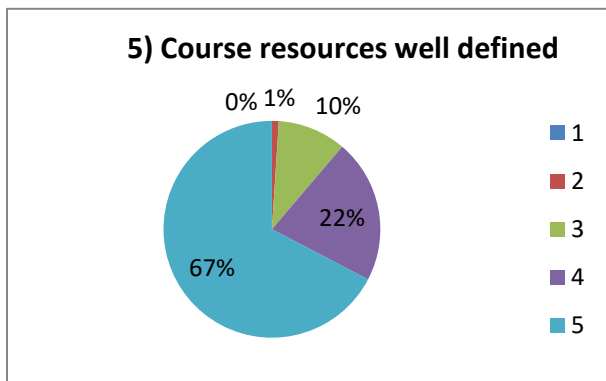
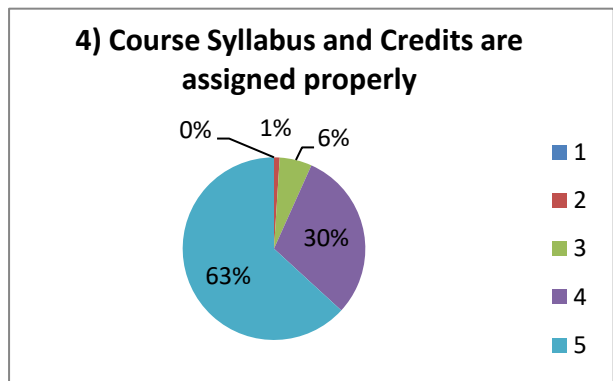
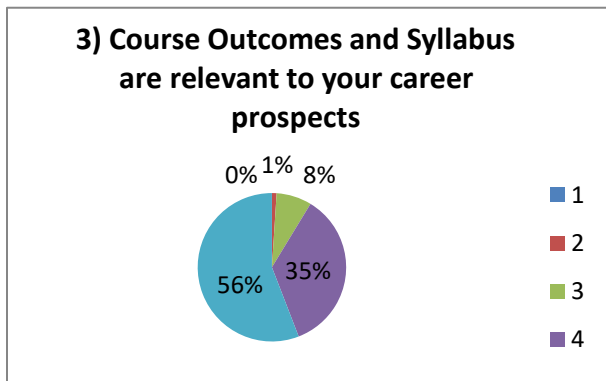
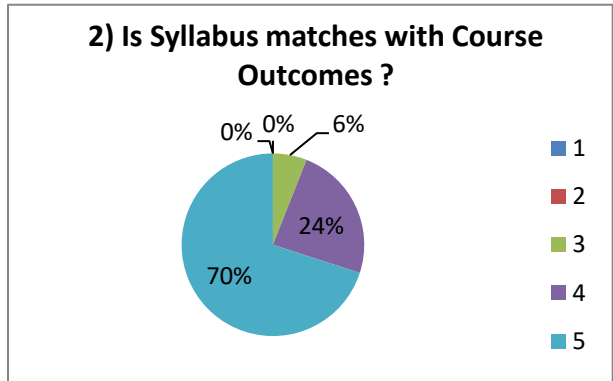
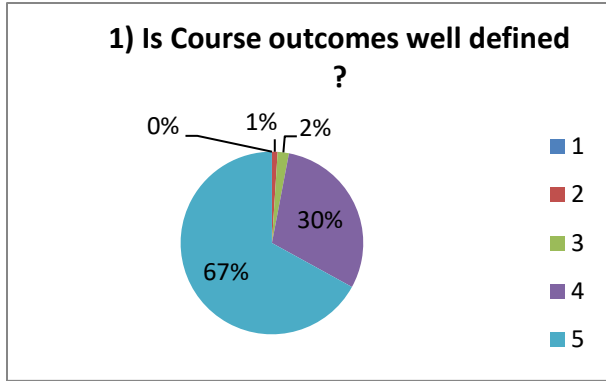
**Pharm D**
**Responses: 105**

Sl. No	Feedback questions	Responses				
		1	2	3	4	5
1	Is course outcomes well defined	0%	1%	2%	30%	67%
2	Is syllabus matches with course outcome	0%	0%	6%	24%	70%
3	Course outcomes and syllabus are relevant to your career prospects	0%	1%	7.6%	35%	55.2%
4	Course syllabus and credits are assigned properly	0%	1%	5.7%	30%	63%
5	Course resources well defined	0%	1%	10%	21%	66%
6	Subject knowledge level of the faculty	0%	1%	12%	30%	57%
7	Whether faculty Encourage questions from students	0%	0%	1%	19%	80%
8	Is faculty inspire and guide students to explore more on topics taught	0%	0%	5%	24%	71%
9	Whether Activity based learning encouraged	3%	0%	7%	28%	62%
10	Is online learning encouraged	0%	1.9%	3.8%	32%	60%
11	Assessment questions are in line with course learning objectives	0%	2.8%	1.9%	31%	64%
12	Provides feedback on grading	0%	1.9%	5.7%	34%	80%
13	Faculty members grade students fairly	0%	1.9%	2.8%	24%	69%
14	Cleanliness of class room	0%	0%	7.6%	34%	58%
15	Whether laboratory condition are good	0%	1.9%	2%	29%	67%



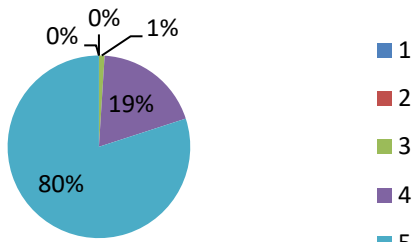
**PRINCIPAL**  
EAST POINT COLLEGE OF PHARMACY  
BIDARAHALLI, BANGALORE-49

**Feedback Analysis: 2021-2022**

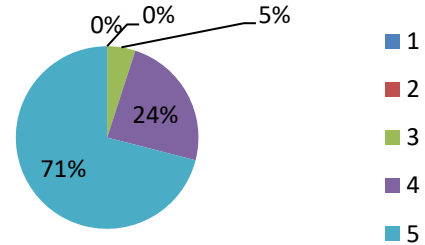



**PRINCIPAL**  
**EAST POINT COLLEGE OF PHARMACY**  
**BIDARAHALLI, BANGALORE-49**

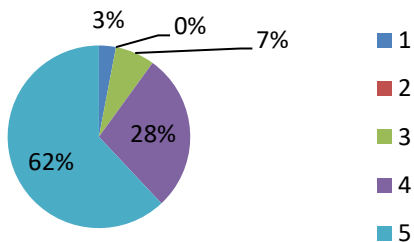
**7) Encourage Questions from students**



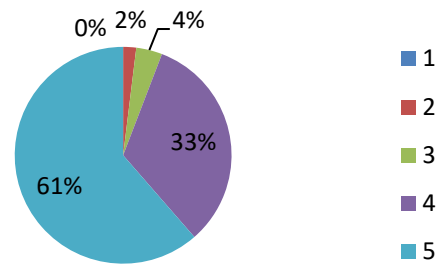
**8) Inspire and Guides students to explore more on topics taught**



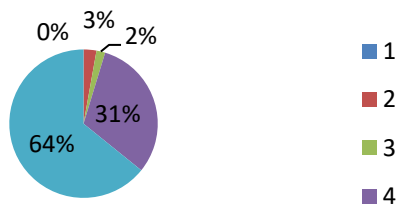
**9) Activity based learning encouraged**



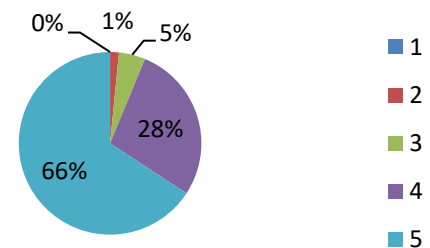
**10) Online learning encouraged**




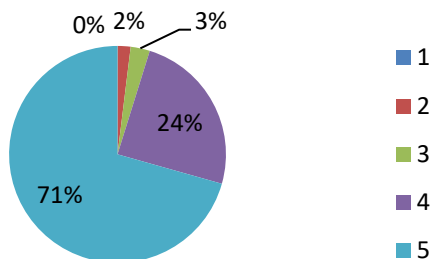
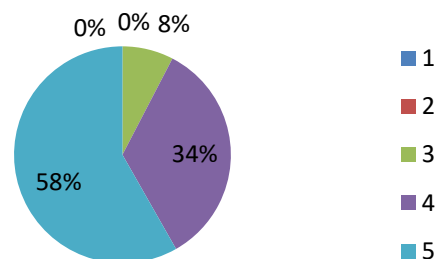
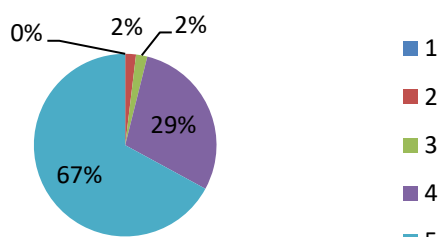
**11) Assessment Questions are in line with course learning objectives**



**12) Faculty Members grade students fairly**



  
PRINCIPAL  
EAST POINT COLLEGE OF PHARMACY  
BIDARAHALLI, BANGALORE-49

**13) provides feedback on grading**

**14) Cleanliness of the classroom**

**15) whether laboratory equipments are in good condition**


Sl. No	Questionnaire	Feedback	Action taken
1	Cleanliness of Classroom	Some students complained classroom was dirty	Instructed the sweepers to clean the classroom twice the day
2	Weather assignment question help to learn how to apply the concepts	Students wanted exact questions based on university question paper	According to syllabus framed by the university assignment questions were helpful
3	Course outcomes and syllabus are relevant to your career prospects	Students suggested include more career-oriented programs	Career oriented seminars are organized

**M. Pharm (Pharmaceutics)**
**Responses: 18**

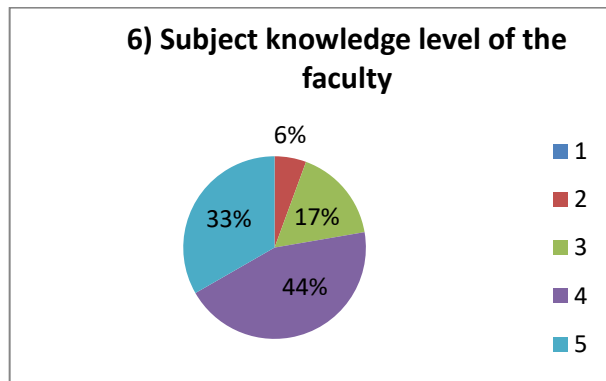
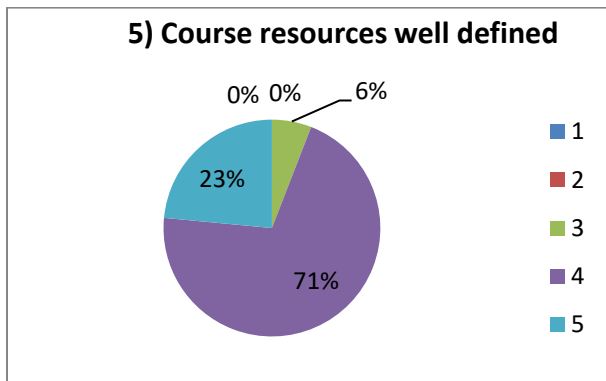
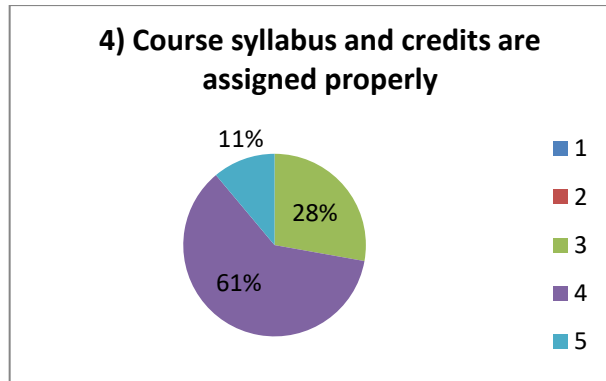
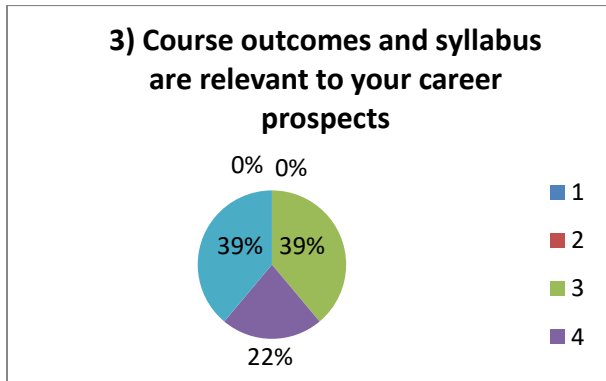
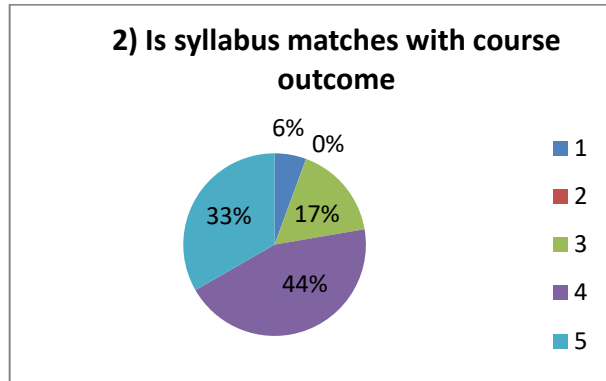
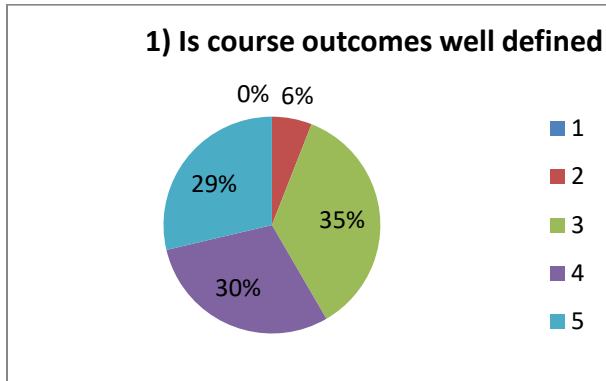

Sl. No	Feedback questions	Responses				
		1	2	3	4	5
1	Is course outcomes well defined	0%	5.9%	35.3%	29.4%	28.4%
2	Is syllabus matches with course outcome	5.6%	0%	16.7%	44.4%	33.3%
3	Course outcomes and syllabus are relevant to your career prospects	0%	0%	38.9%	22.2%	38.9%
4	Course syllabus and credits are assigned properly	0%	0%	27.8%	61.1%	11.1%
5	Course resources well defined	0%	0%	5.9%	70.6%	23.5%
6	Subject knowledge level of the faculty	0%	5.6%	16.7%	44.4%	33.3%
7	Whether faculty Encourage questions from students	0%	5.6%	22.2%	50%	22.2%
8	Is faculty inspire and guide students to explore more on topics taught	0%	0%	11.1%	56.7%	22.2%
9	Whether Activity based learning encouraged	0%	0%	33.3%	33.3%	33.3%
10	Is online learning encouraged	0%	0%	38.9%	50%	11.1%
11	Assessment questions are in line with course learning objectives	0%	5.6%	38.9%	38.9%	16.7%
12	Provides feedback on grading	0%	0%	11.1%	55.6%	33.3%
13	Faculty members grade students fairly	0%	0%	33.3%	33.3%	33.3%
14	Cleanliness of class room	0%	5.6%	16.7%	27.8%	50%
15	Whether laboratory condition are good	0%	0%	38.9%	11.1%	50%



PRINCIPAL  
EAST POINT COLLEGE OF PHARMACY  
BIDARAHALLI, BANGALORE-49

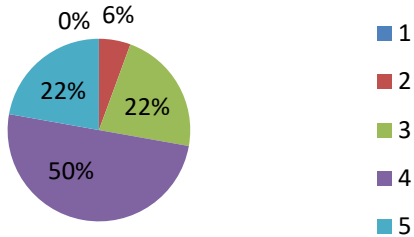


**Feedback Analysis: 2021-2022**

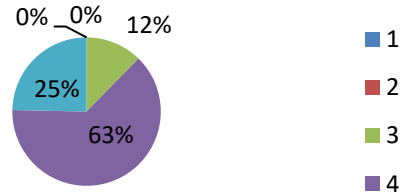



**PRINCIPAL**  
**EAST POINT COLLEGE OF PHARMACY**  
**BIDARAHALLI, BANGALORE-49**

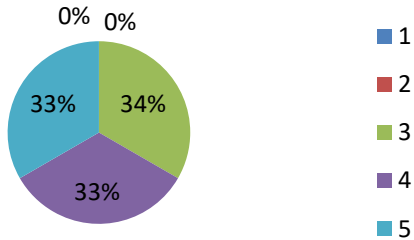
**7) Whether faculty Encourage questions from students**



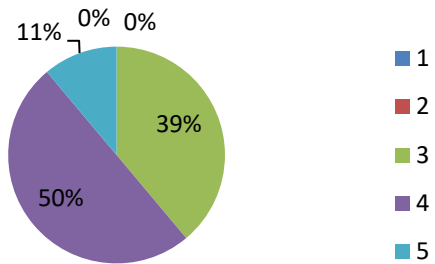
**8) Is faculty inspire and guide students to explore more on topics taught**



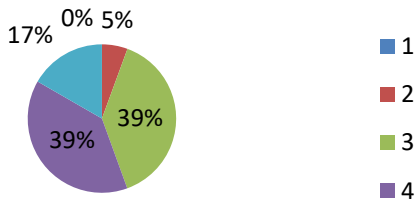
**9) Whether Activity based learning encouraged**



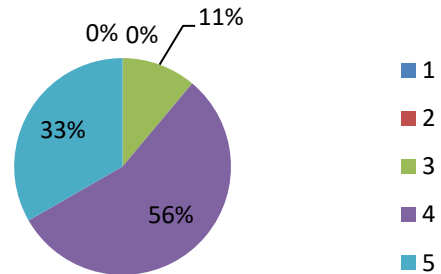
**10) Is online learning encouraged**



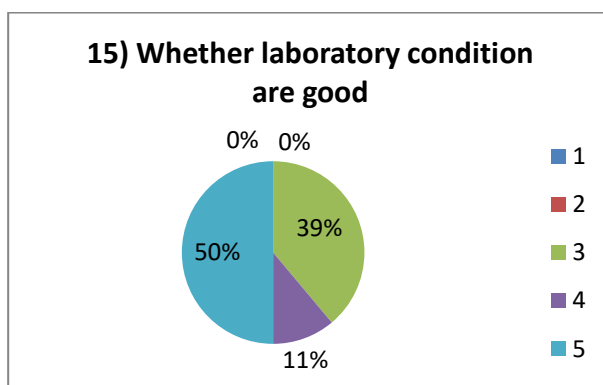
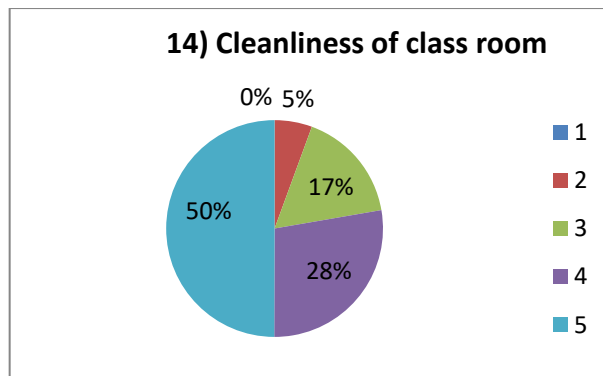
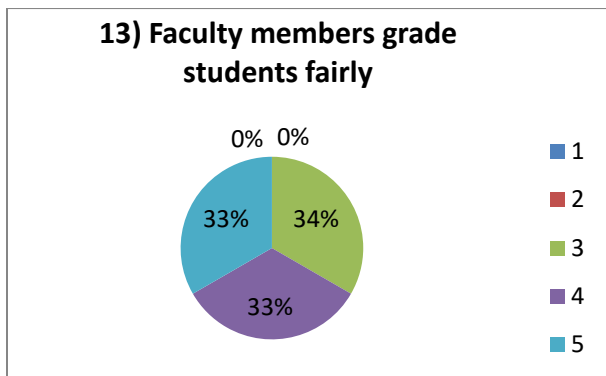
**11) Assessment questions are in line with course learning objectives**



**12) Provides feedback on grading**




*[Signature]*  
**PRINCIPAL**  
**EAST POINT COLLEGE OF PHARMACY**  
**BIDARAHALLI, BANGALORE-49**



Sl. No	Questionnaire	Feedback	Action taken
1	Whether Laboratory equipment is in good condition	Few equipment are in good condition, few to be serviced	Service was done for upgrading the equipment's which were in poor condition
2	Is online learning is encouraged	Majority of the students wanted online mode	Computers and related Software's have been procured for online teaching methods
3	Is activity- b a s e d learning encouraged	Students were not satisfied with black board teaching	Open book tests, assignments, seminars and quiz were conducted
4	Is faculty inspire and guide students to explore more on topics taught	Some students were unsatisfied with new topics	Staffs inspired students with the topics by sending them to recognized libraries like IISC Bangalore.

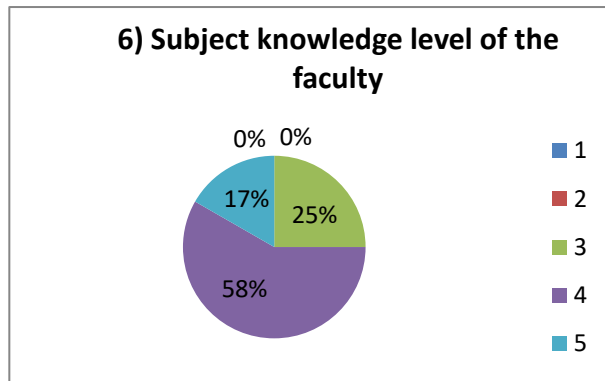
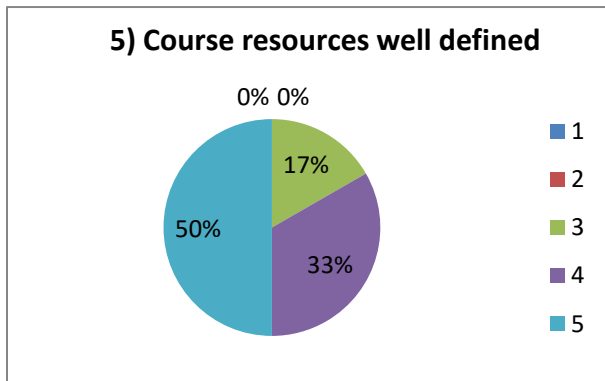
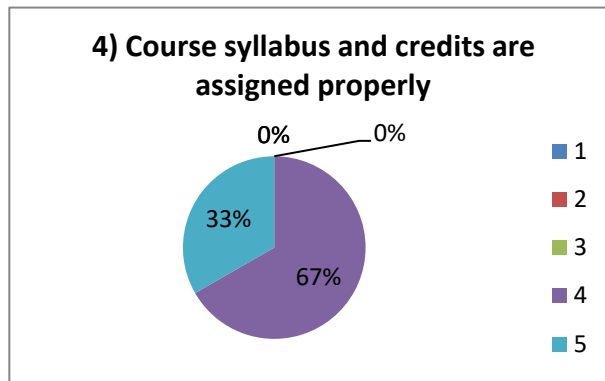
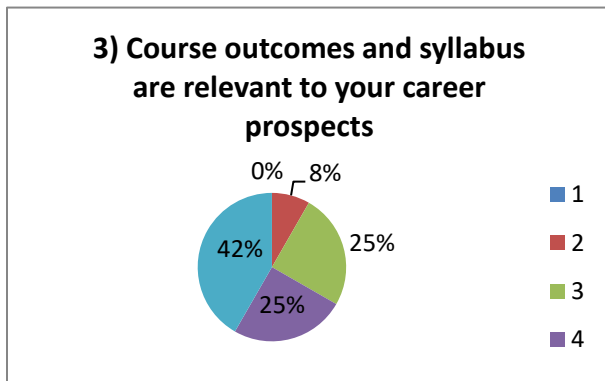
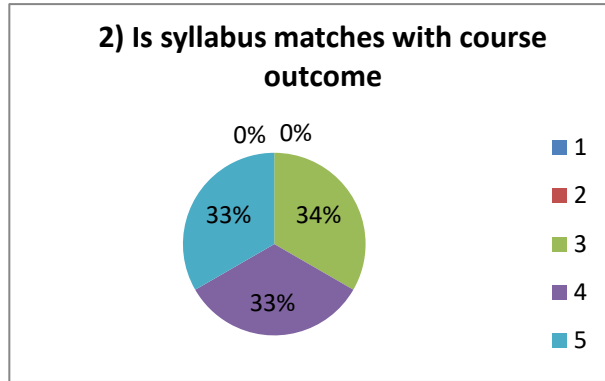
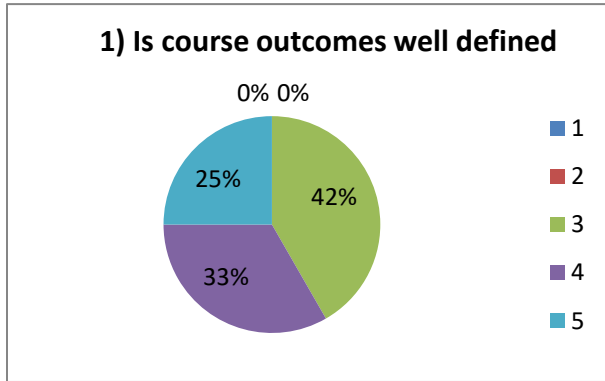

**M. Pharm (Pharmacology)**
**Responses: 12**

Sl. No	Feedback questions	Responses				
		1	2	3	4	5
1	Is course outcomes well defined	0%	0%	41.7%	33.3%	25%
2	Is syllabus matches with course outcome	0%	0%	33.3%	33.3%	33.3%
3	Course outcomes and syllabus are relevant to your career prospects	0%	8.3%	25%	25%	41.7%
4	Course syllabus and credits are assigned properly	0%	0%	0%	66.7%	33.3%
5	Course resources well defined	0%	0%	16.7%	33.3%	50%
6	Subject knowledge level of the faculty	0%	0%	25%	58.3%	16.7%
7	Whether faculty Encourage questions from students	0%	8.3	16.7%	8.3%	66.7%
8	Is faculty inspire and guide students to explore more on topics taught	0%	0%	8.3%	58.3%	33.3%
9	Whether Activity based learning encouraged	0%	0%	8.3%	66.7%	25%
10	Is online learning encouraged	0%	0%	8.3%	66.7%	25%
11	Assessment questions are in line with course learning objectives	0%	0%	8.3%	41.7%	50%
12	Provides feedback on grading	0%	0%	8.3%	33.3%	58.3%
13	Faculty members grade students fairly	0%	8.3%	25%	25%	41.7%
14	Cleanliness of class room	0%	8.3%	33.3%	16.7%	41.7%
15	Whether laboratory condition are good	0%	16.7%	16.7%	25%	41.7%



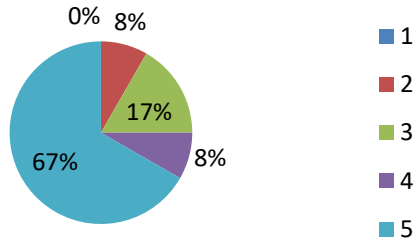
**PRINCIPAL**  
**EAST POINT COLLEGE OF PHARMACY**  
**BIDARAHALLI, BANGALORE-49**

**Feedback Analysis: 2021-2022**

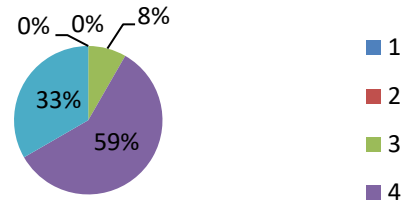



**PRINCIPAL**  
EAST POINT COLLEGE OF PHARMACY  
BIDARAHALLI, BANGALORE-49

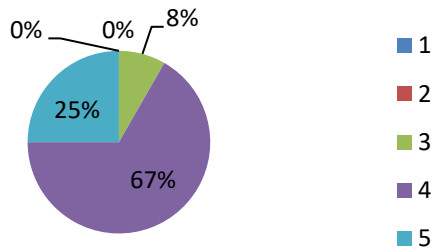
**7) Whether faculty Encourage questions from students**



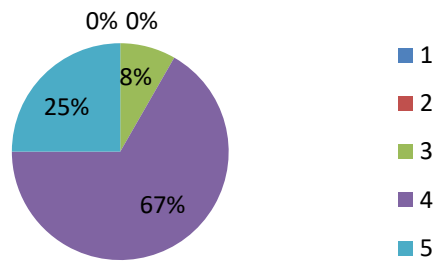
**8) Is faculty inspire and guide students to explore more on topics taught**



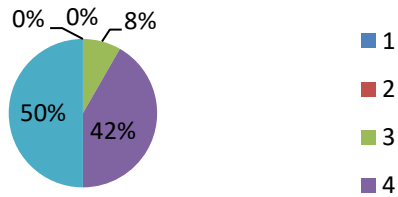
**9) Whether Activity based learning encouraged**



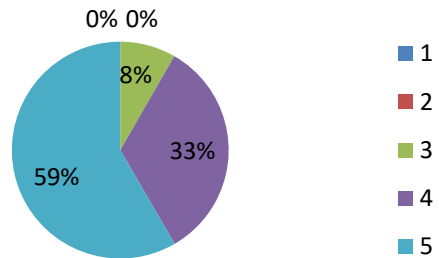
**10) Is online learning encouraged**



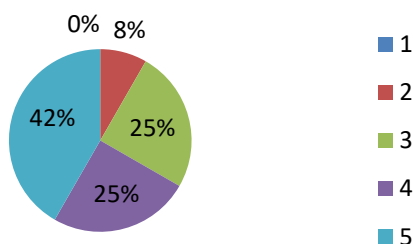
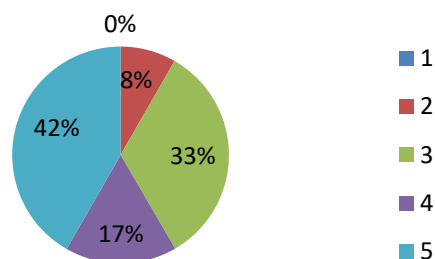
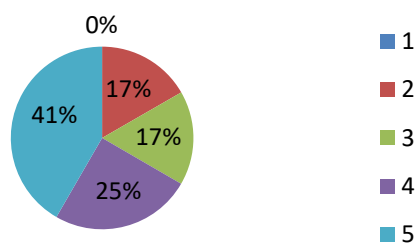
**11) Assessment questions are in line with course learning objectives**



**12) Provides feedback on grading**



  
PRINCIPAL  
EAST POINT COLLEGE OF PHARMACY  
BIDARAHALLI, BANGALORE-49

**13) Faculty members grade students fairly**

**14) Cleanliness of class room**

**15) Whether laboratory condition are good**


Sl. No	Questionnaire	Feedback	Action taken
1	Whether Laboratory equipment is in good condition	Few equipment are in good condition, few to be serviced	Service was done for upgrading the equipment's which were in poor condition
2	Whether Assessment questions are in line with course learning objectives	Most of the questions were not in order	HOD instructed the staffs to follow proper CO-PO procedure.
3	Is activity-based learning	Students were not satisfied with black board teaching	Open book tests, assignments, seminars and quiz were conducted
4	Cleanliness of class room	Some students complained classroom was dirty	Instructed the sweepers to clean the classroom twice the day
5	Is faculty inspire and guide students to explore more on topics taught	Some students were unsatisfied with new topics	Staffs inspired students with the topics by sending them to recognized libraries like IISC



East Point Campus, Jnana Prabha, Virgo Nagar Post,  
Bengaluru – 560049, Karnataka

# **FEEDBACK FROM FACULTY**



### FEEDBACK FROM FACULTY

Feedback from the faculties for the Ambience and the Academic performance of the institution is collected through online mode (Google form). The feedback analysis is done and the analysis report is submitted to the principal and then to the management for the necessary actions.

#### RESPONSES: 36

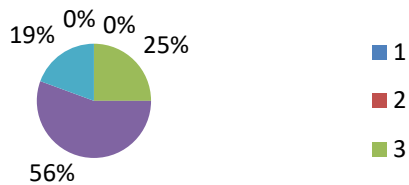
Sl. No	Feedback questions	Responses				
		1	2	3	4	5
1	Whether Adequate infrastructure is available in the college for the curriculum transaction in different Modes	0%	6.3%	9.4%	75%	9.4%
2	Is enough freedom was given to contribute your ideas on curriculum design and development	0%	6.3%	9.4%	65.6%	18.8%
3	The System followed by the University for the design and development of the curriculum is effective.	0%	3.1%	9.4%	62.5%	25%
4	Whether Freedom is given in adopting new techniques/ strategies of testing and assessment of students	0%	6.3%	6.3%	56.3%	31.3%
5	Representation from the corporate / Industry sector is helpful in designing and improving the courses	0%	6.3%	9.4%	68.8%	15.6%
6	Washroom facilities for staffs	3.1%	12.5%	0%	37.5%	46.9%
7	Parking facilities for staffs	0%	0%	9.4%	50%	40.6%
8	Whether College timing is good	0%	3.1%	6.3%	53.1%	37.5%



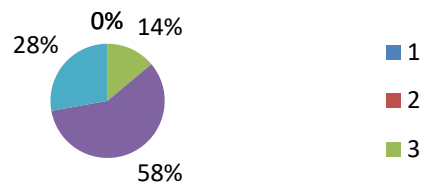
PRINCIPAL  
 EAST POINT COLLEGE OF PHARMACY  
 BIDARAHALLI, BANGALORE-49

**Feedback Analysis: 2021-2022**

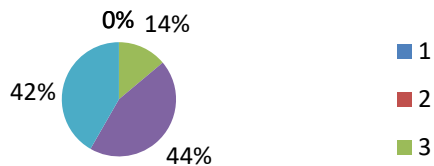
**1) Adequate Infrastructure Is Available In The College For The Curriculum Transaction In Different Modes ( Face To Face / Blended / ...**



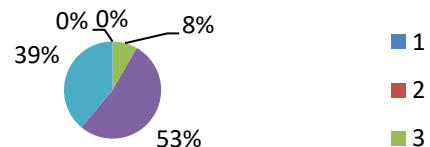
**2) Given enough freedom to contribute your ideas on curriculum design and development**



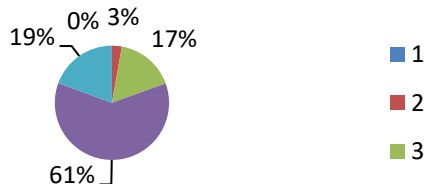
**3) The System followed by the University for the design and development of the curriculum is effective.**



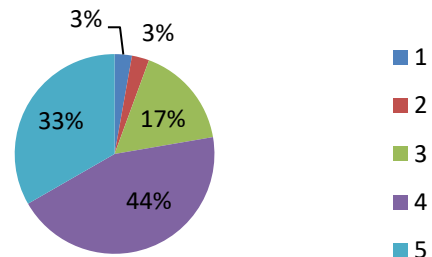
**4) Freedom is given in adopting new techniques/ strategies of testing and assessment of students**



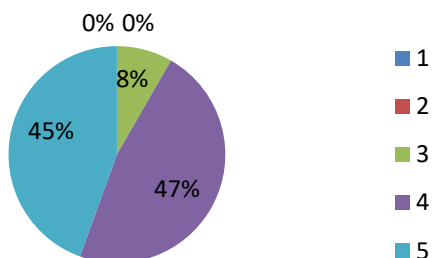
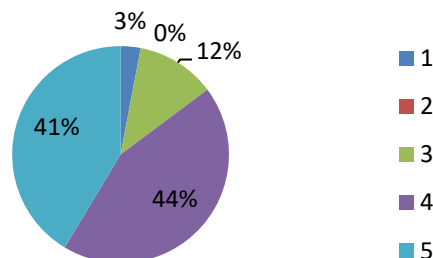
**5) Representation from the corporate / Industry sector is helpful in designing and improving the courses**



**6) Washroom facilities for staffs**




**PRINCIPAL**  
**EAST POINT COLLEGE OF PHARMACY**  
**BIDARAHALLI, BANGALORE-49**

**7) Parking facilities for staffs**

**8) Whether College timing is good**


Sl. No	Questionnaire	Feedback	Action taken
1	Whether Adequate infrastructure is available in the college for the curriculum transaction in different modes	Most of the staffs suggested to adapt new technologies for teaching	IQAC instructed faculty to include ICT facilities such as video clips, 3D presentations to make teaching learning students centric.
2	Is Representation from the corporate / Industry sector is helpful in designing and improving the courses	Staffs suggested to include corporate / Industry sector in designing and improving the courses	Suggestions forwarded to placement cell as it decided to include more companies in campus in designing and improving the courses
3	Is enough freedom was given to contribute your ideas on curriculum design and development	Some staffs were not satisfied by curriculum design and development	Proposal for Practice school (Projects) were initiated by the staffs



**PRINCIPAL**  
**EAST POINT COLLEGE OF PHARMACY**  
 BIDARAHALLI, BANGALORE-49



East Point Campus, Jnana Prabha, Virgo Nagar Post,  
Bengaluru – 560049, Karnataka

# **FEEDBACK FROM ALUMNI**

## FEEDBACK FROM ALUMNI

Feedback from the alumni for the Ambience and the Academic performance of the institution is collected through online mode (Google form). The feedback analysis is done and the analysis report is submitted to the principal and then to the management for the necessary actions.

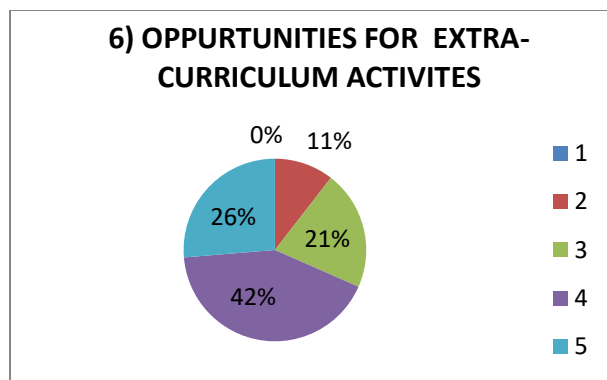
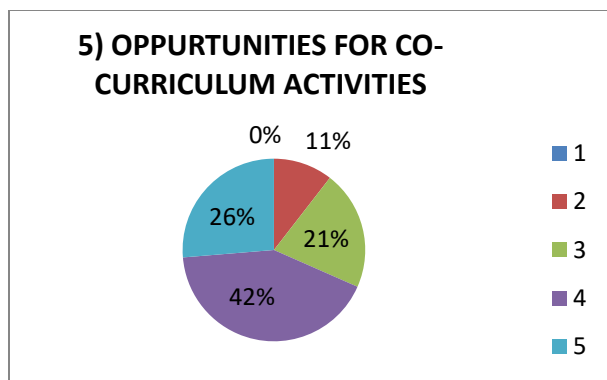
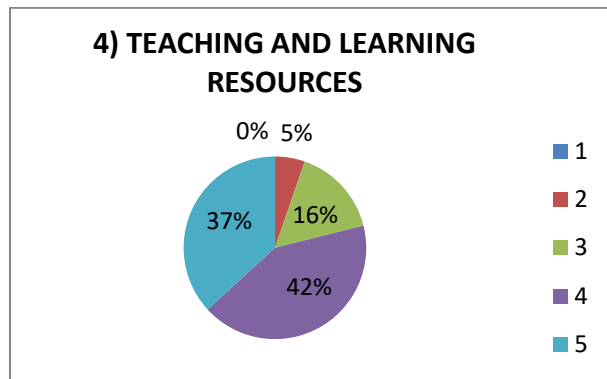
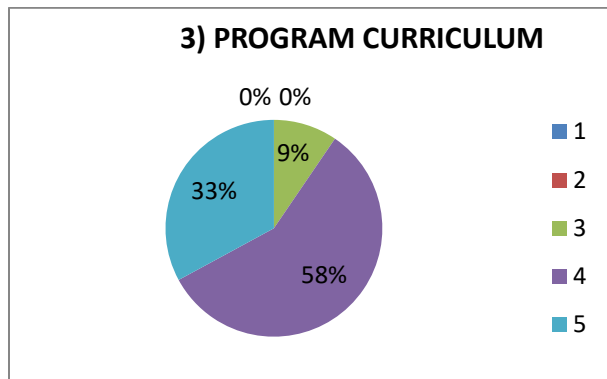
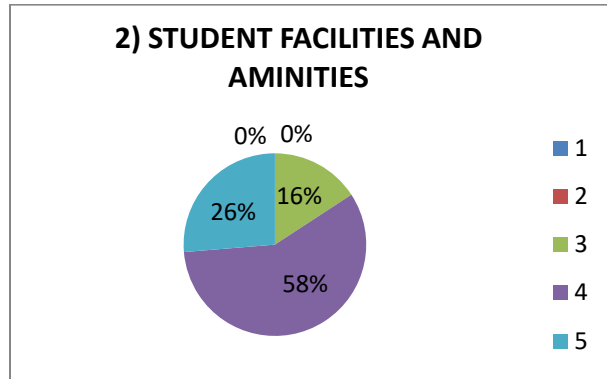
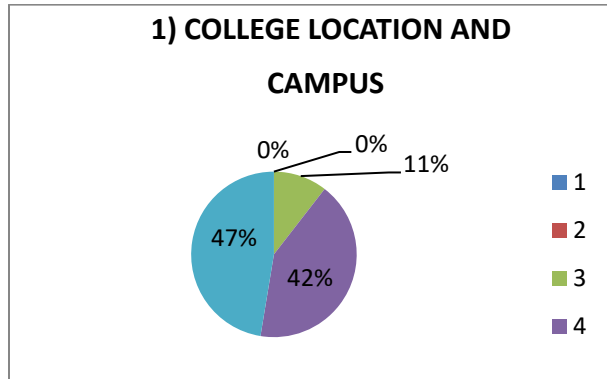
**Responses: 31**

Sl. No	Feedback questions	Responses				
		1	2	3	4	5
1	College location and campus	0%	0%	10.5%	42.1%	47.4%
2	Student facilities and amenities	0%	0%	15.8%	57.9%	26.3%
3	Program Curriculum	0%	0%	10.5%	63.2%	26.3%
4	Teaching and Learning Resources	0%	5.3%	15.8%	42.1%	36.8%
5	Opportunities for co-curricular activities	0%	5.3%	15.8%	31.6%	47.4%
6	Opportunities for extra- curricular activities	0%	10.5%	21.1%	42.1%	26.3%
7	Internship opportunities	0%	5.3%	31.6%	15.8%	47.4%
8	Placement opportunities	5.3%	0%	5.3%	63.2%	26.3%
9	Innovation and entrepreneurship opportunities	0%	5.3%	10.5%	52.6%	31.6%
10	Encouragement for Higher studies	0%	5.3%	10.5%	21.1%	63.2%



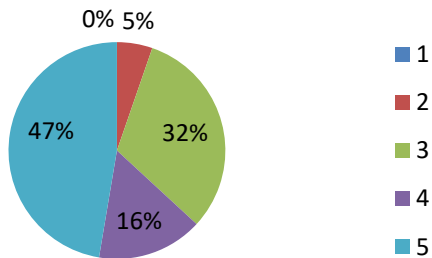
**PRINCIPAL**  
**EAST POINT COLLEGE OF PHARMACY**  
 BIDARAHALLI, BANGALORE-49

**Feedback Analysis: 2021-2022**

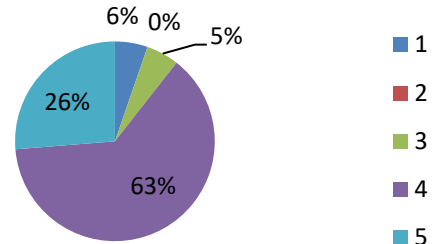



**PRINCIPAL**  
EAST POINT COLLEGE OF PHARMACY  
BIDARAHALLI, BANGALORE-49

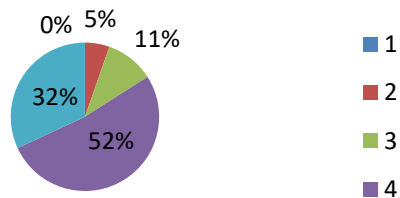
**7) INTERNSHIP OPPURTUNITIES**



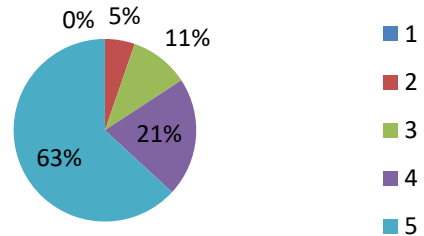
**8) PLACEMENT OPPURTUNITIES**



**9) INNOVATION AND ENTREPRENEURSHIP OPPURTUNITIES**



**10) ENCOURAGEMENT FOR HIGHER STUDIES**



Sl. No	Feedback	Action taken
1	Placement Opportunities	Placement Cell Has Initiated Placement Drive and Approached Various Companies for Placement of Students

  
PRINCIPAL  
EAST POINT COLLEGE OF PHARMACY  
BIDARAHALLI, BANGALORE-49



East Point Campus, Jnana Prabha, Virgo Nagar Post,  
Bengaluru – 560049, Karnataka

# **PARENTS FEEDBACK ABOUT COLLEGE**



## PARENT'S FEEDBACK ABOUT COLLEGE

Feedback from the parents for the Ambience and the Academic performance of the institution is collected through online mode (Google form). The feedback analysis is done and the analysis report is submitted to the principal and then to the management for the necessary actions.

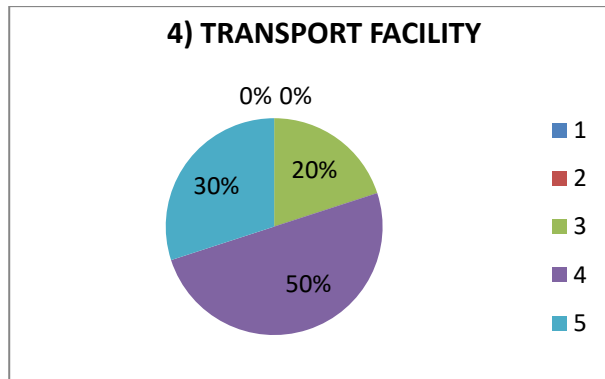
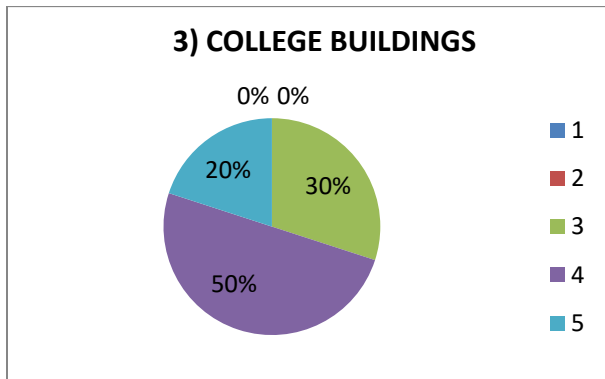
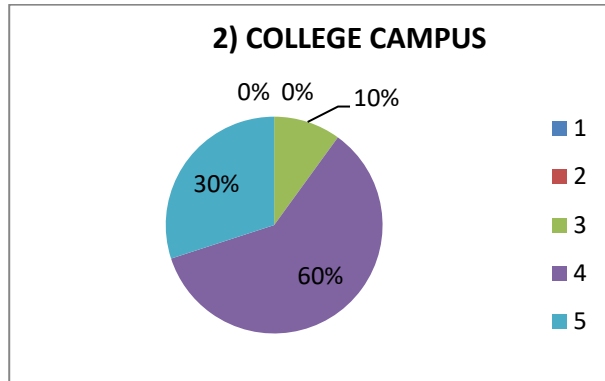
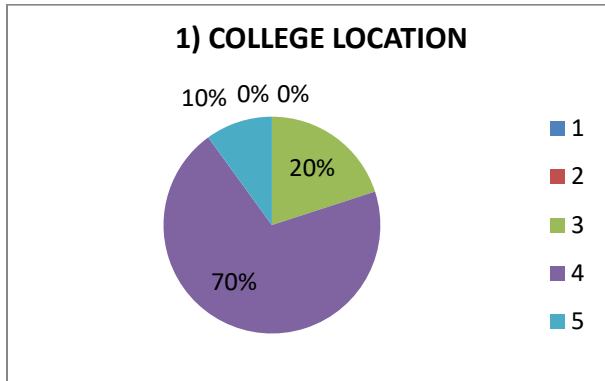
**Responses: 10**

Sl. No	Feedback questions	Responses				
		1	2	3	4	5
1	College Location	0%	0%	20%	70%	10%
2	College campus	0%	0%	10%	60%	30%
3	College Building	0%	0%	30%	50%	20%
4	Transport Facility	0%	0%	20%	50%	30%
5	Parking Facility	0%	0%	20%	70%	10%
6	Security	0%	0%	10%	60%	30%
7	Co-Curricular Activities	0%	0%	40%	30%	30%
8	Extra-Curricular Activities	0%	0%	20%	30%	50%
9	Canteen Facilities	0%	0%	30%	60%	10%
10	Hostel Facilities	0%	0%	10%	70%	20%
11	Interaction with admission department	0%	0%	30%	50%	20%
12	Communication with college administrators / faculty members	0%	0%	30%	40%	30%



**PRINCIPAL**  
**EAST POINT COLLEGE OF PHARMACY**  
 BIDARAHALLI, BANGALORE-49

**Feedback Analysis: 2021-2022 (About College)**




**PRINCIPAL**  
**EAST POINT COLLEGE OF PHARMACY**  
**BIDARAHALLI, BANGALORE-49**



East Point Campus, Jnana Prabha, Virgo Nagar Post,  
Bengaluru – 560049, Karnataka

# **PARENTS FEEDBACK ABOUT ACADEMICS**

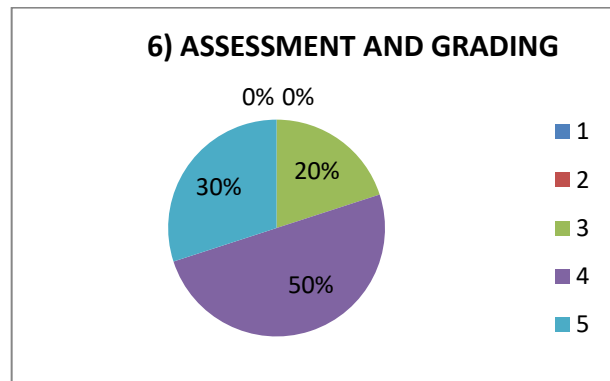
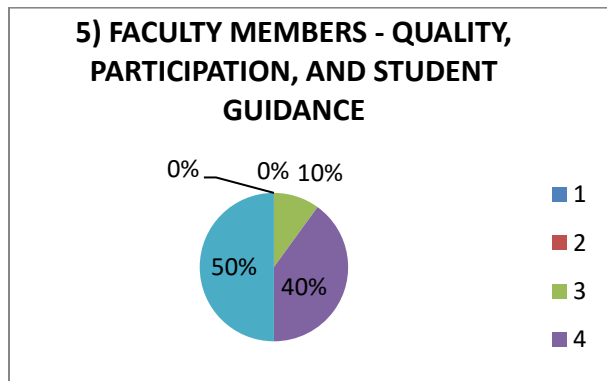
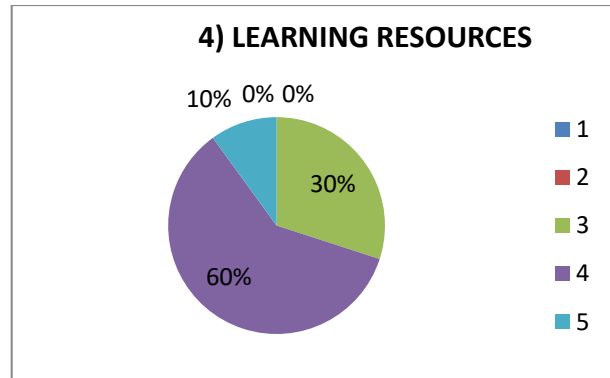
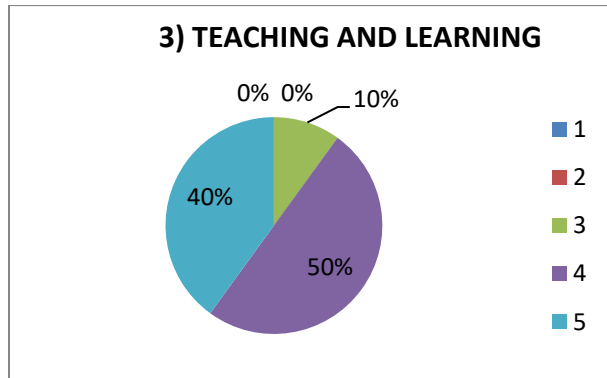
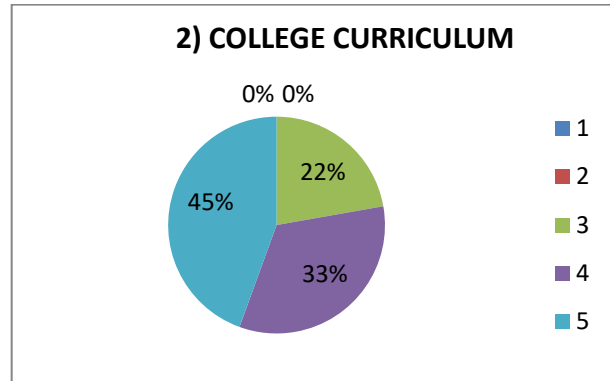
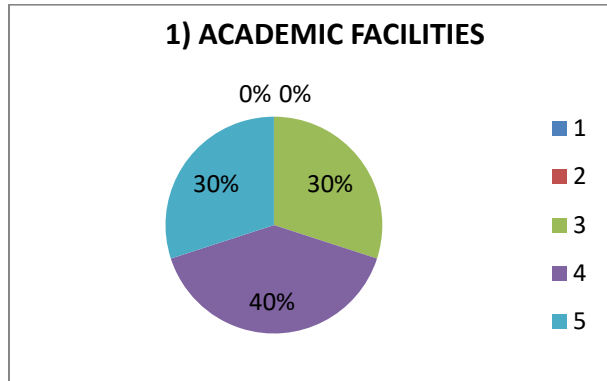
### PARENT'S FEEDBACK ABOUT ACADEMICS

Sl. No	Feedback questions	Responses				
		1	2	3	4	5
1	Academic facilities	0%	0%	30%	40%	30%
2	College Curriculum	0%	0%	22.2%	33.3%	44.4%
3	Teaching and learning	0%	0%	10%	50%	40%
4	Learning Resources	0%	0%	30%	60%	10%
5	Faculty Members- Quality, Participation and students Guidance	0%	0%	10%	40%	50%
6	Assessment and grading	0%	0%	20%	50%	30%
7	Internship	0%	0%	20%	60%	20%
8	Training and Placement	0%	0%	20%	40%	20%
9	Opportunities beyond Curriculum	0%	0%	30%	50%	20%
10	Issuing of transcripts and academic documents	0%	0%	20%	70%	20%



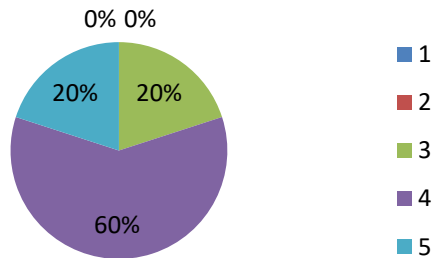
**PRINCIPAL**  
**EAST POINT COLLEGE OF PHARMACY**  
**BIDARAHALLI, BANGALORE-49**

**Feedback Analysis: 2021-2022 (About Academics)**

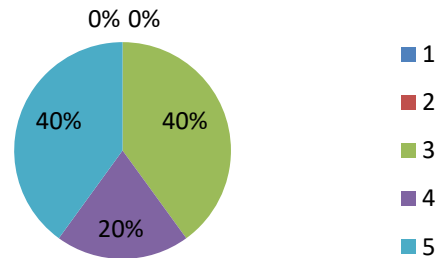



**PRINCIPAL**  
**EAST POINT COLLEGE OF PHARMACY**  
**BIDARAHALLI, BANGALORE-49**

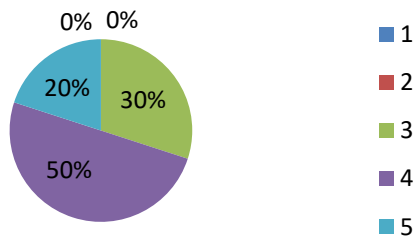
**7) INTERNSHIP**



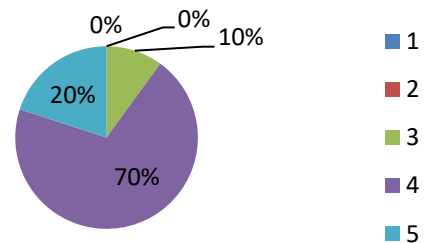
**8) TRAINING AND PLACEMENTS**



**9) OPPURTUNITIES FOR LEARNING BEYOND CURRICULUM**



**10) ISSUING OF TRANSCRIPTS AND ACADEMIC DOCUMENTS**



Sl. No	Feedback	Action taken
1	About college	The institution has provided good infrastructure, canteen, parking, sports ground and with good hostel facilities.
2	Academics	The institution has experienced faculties with good computer lab and all labs are equipped with updated equipment



**PRINCIPAL**  
**EAST POINT COLLEGE OF PHARMACY**  
**BIDARAHALLI, BANGALORE-49**



East Point Campus, Jnana Prabha, Virgo Nagar Post,  
Bengaluru – 560049, Karnataka

# **FEEDBACK FROM EMPLOYER'S**



East Point Campus, Jnana Prabha, Virgo Nagar Post,  
Bengaluru – 560049, Karnataka

### FEEDBACK FROM EMPLOYER'S

Feedback from the employers for the Academic performance of the institution is collected. The feedback analysis is done and the analysis report is submitted the principal and then to the management to the for the necessary actions.

Sl. No	Feedback	Action taken
1	Conduciveness Of the Syllabus for The Students Readiness Towards Recruitment	According to BOS of RGUHS the upgraded syllabus are in action and placement cell has been initiated
2	Provision Of Inoculating Students Creativity in The Curriculum	Training programs and projects have been conducted as per the curriculum

  
PRINCIPAL  
EAST POINT COLLEGE OF PHARMACY  
BIDARAHALLI, BANGALORE-49