

2022-2023




East Point Campus, Jnana Prabha, Virgo Nagar Post,
Bengaluru – 560049, Karnataka

FEEDBACK ANALYSIS AND ACTION TAKEN REPORT

ACADEMIC YEAR: 2022-2023

OBJECTIVE OF FEED BACK:

- The institution aims to offer the best possible environment and learning experience to encourage students to perform to their full potential for academic achievement.
- Stakeholders i.e., students, teachers, employers play an important role in the evaluation, development and enhancement of quality of this learning process.
- Hence, the institution collects feedback from all the stakeholders i.e., students, teachers, employers and alumni every academic in year on curriculum/syllabus to evaluate its service policies can be revised and make changes as per stakeholders' requirements.


PRINCIPAL
EAST POINT COLLEGE OF PHARMACY
BIDARAHALLI, BANGALORE-49



East Point Campus, Jnana Prabha, Virgo Nagar Post,
Bengaluru – 560049, Karnataka

FEEDBACK FROM STUDENTS

FEEDBACK FROM STUDENTS

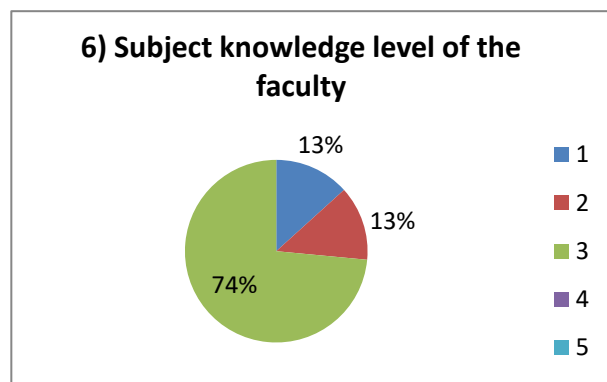
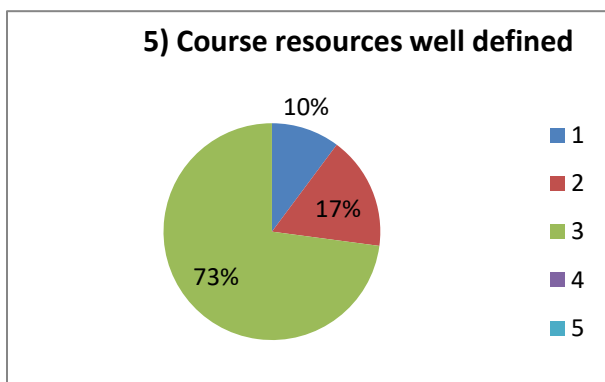
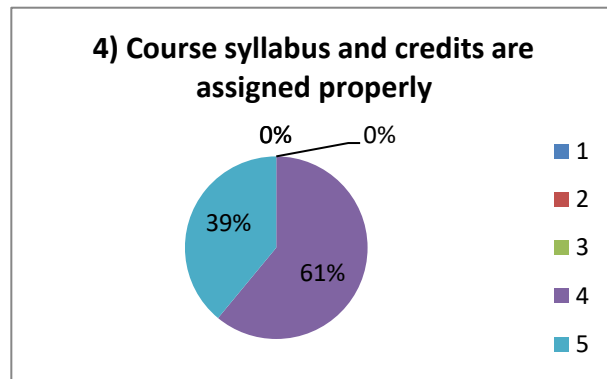
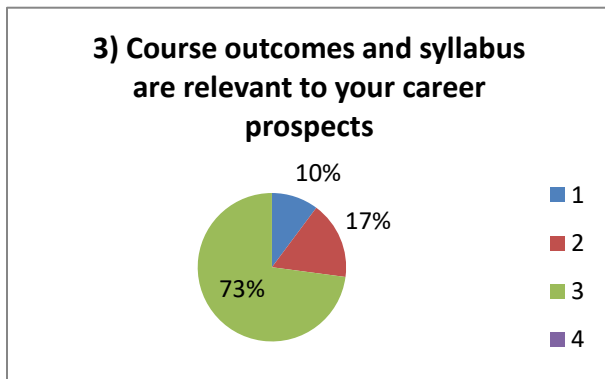
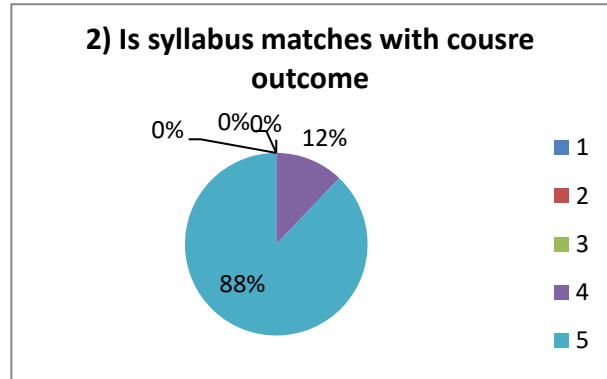
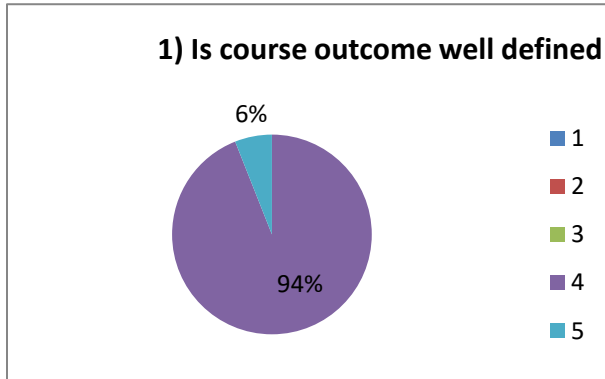

- The Students' Feedback on curriculum is designed to get formative feedback from students that can be used towards the improvements in the quality of course design and delivery, as well as student learning experiences.
- In the session 2022-2023, the college collected the feedback from students of different streams. The data is analyzed, and their suggestions are considered for possible incorporation in the curriculum.

B. Pharmacy Even Semester

Respondents: 164

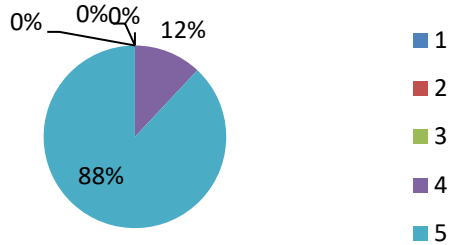
Sl. No	Feedback Questions	Responses				
		1	2	3	4	5
1	Is course outcomes well defined	0%	0%	0%	12%	88%
2	Is syllabus matches with course outcome	0%	0%	10%	49%	41%
3	Course outcomes and syllabus are relevant to your career prospects	0%	0%	0%	61%	39%
4	Course syllabus and credits are assigned properly	0%	0%	10%	49%	41%
5	Course resources well defined	0%	0%	0%	84%	16%
6	Subject knowledge level of the faculty	0%	0%	10%	49%	41%
7	Whether faculty Encourage questions from students	0%	0%	0%	61%	39%
8	Is faculty inspire and guide students to explore more on topics taught	0%	0%	10%	49%	41%
9	Whether Activity based learning encouraged	0%	0%	10%	49%	41%
10	Is online learning encouraged	0%	0%	84%	1%	15%
11	Assessment questions are in line with course learning objectives	0%	0%	0%	39%	61%
12	Provides feedback on grading	0%	0%	0%	39%	61%
13	Faculty members grade students fairly	0%	0%	0%	39%	61%
14	Cleanliness of class room	0%	0%	10%	49%	41%
15	Whether laboratory condition are good	0%	0%	0%	56%	44%

Feedback Analysis: 2022-2023 (EVEN)

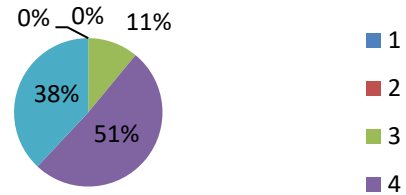



PRINCIPAL
EAST POINT COLLEGE OF PHARMACY
BIDARAHALLI, BANGALORE-49

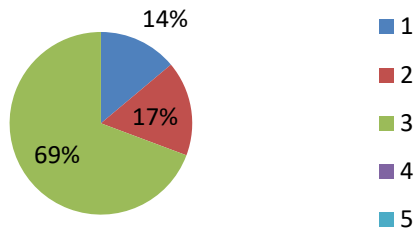
7) Whether faculty Encourage questions from students



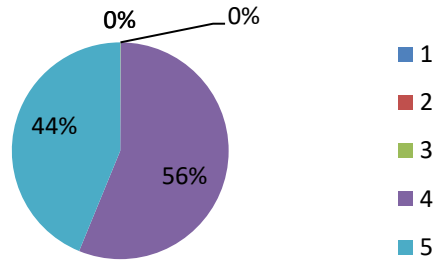
8) Is faculty inspire and guide students to explore more on topics taught



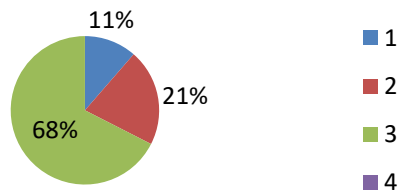
9) Whether Activity based learning encouraged



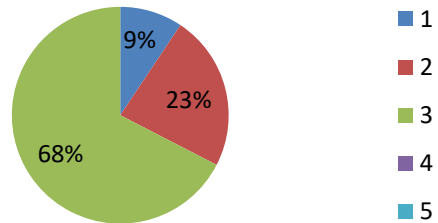
10) Is online learning encouraged



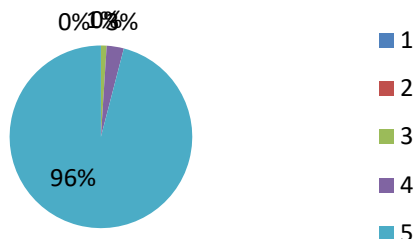
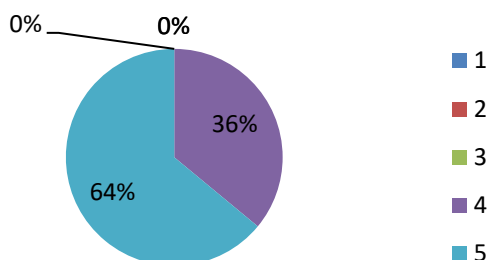
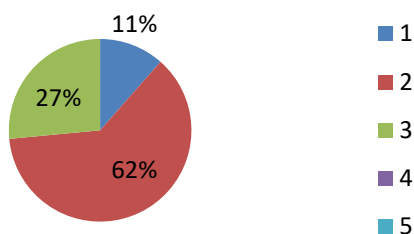
11) Assessment questions are in line with course learning objectives



12) Provides feedback on grading




PRINCIPAL
EAST POINT COLLEGE OF PHARMACY
BIDARAHALLI, BANGALORE-49

13) Faculty members grade students fairly

14) Cleanliness of the classroom

15) Laboratory equipments are in good condition


Sl. No	Questionnaire	Feedback	Action taken
1	Is online learning is encouraged	Majority of the students wanted online mode	Computers and related Software's have been procured for online teaching methods
2	Whether Laboratory equipment is in good condition	Few equipment are in good condition, few to be serviced	Service was done for upgrading the equipment's which were in poor condition
3	Whether staffs Providing feedback on grading	Majority of the students are not satisfied with the grading system.	Principal instructed the staffs to follow proper grading system



PRINCIPAL
 EAST POINT COLLEGE OF PHARMACY
 BIDARAHALLI, BANGALORE-49

B. Pharm odd semester

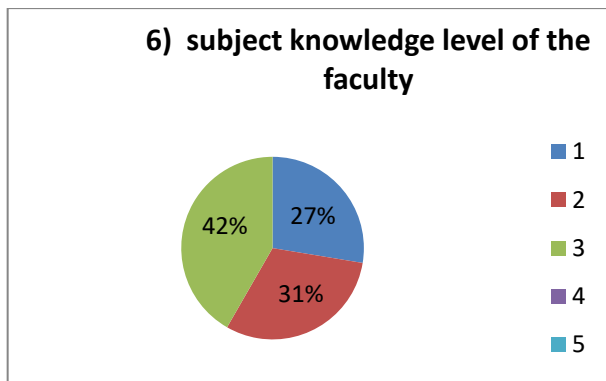
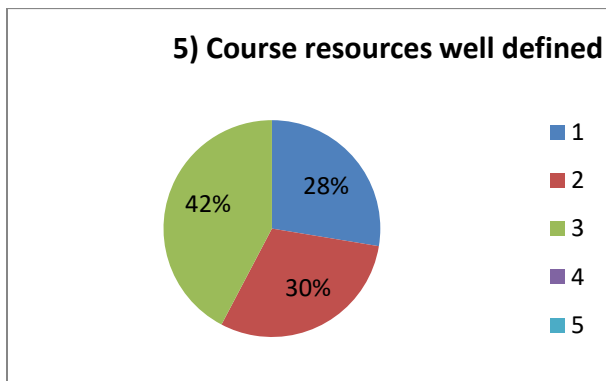
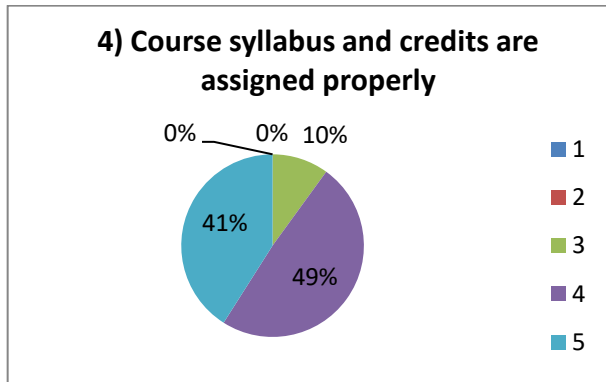
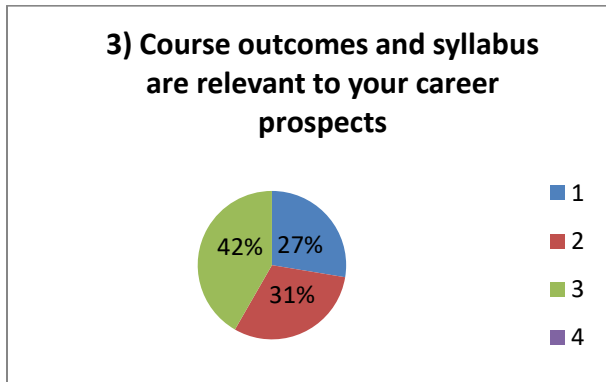
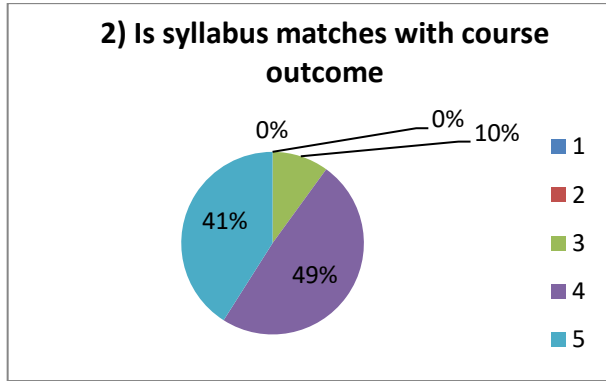
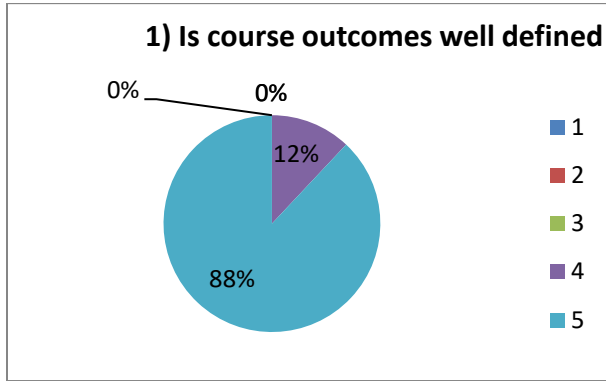
Responses: 167

Sl. No	Feedback questions	Responses				
		1	2	3	4	5
1	Is course outcomes well defined	0%	0%	11%	22%	67%
2	Is syllabus matches with course outcome	0%	0%	-	44%	56%
3	Course outcomes and syllabus are relevant to your career prospects	0%	0%	22%	22%	56%
4	Course syllabus and credits are assigned properly	0%	0%	0%	67%	33%
5	Course resources well defined	0%	0%	0%	78%	22%
6	Subject knowledge level of the faculty	0%	0%	0%	22%	78%
7	Whether faculty Encourage questions from students	0%	0%	0%	11%	89%
8	Is faculty inspire and guide students to explore more on topics taught	0%	0%	0%	11%	89%
9	Whether Activity based learning encouraged	0%	0%	11%	45%	44%
10	Is online learning encouraged	0%	0%	22%	33%	45%
11	Assessment questions are in line with course learning objectives	0%	0%	11%	22%	67%
12	Provides feedback on grading	0%	0%	0%	33%	67%
13	Faculty members grade students fairly	0%	0%	0%	33%	67%
14	Cleanliness of class room	0%	0%	0%	61%	39%
15	Whether laboratory condition are good	0%	0%	10%	49%	41%



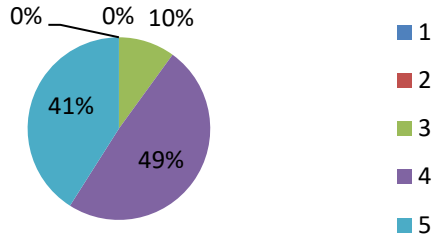
PRINCIPAL
EAST POINT COLLEGE OF PHARMACY
BIDARAHALLI, BANGALORE-49

Feedback Analysis: 2022-2023 (ODD)

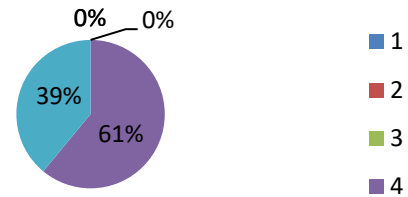



PRINCIPAL
EAST POINT COLLEGE OF PHARMACY
BIDARAHALLI, BANGALORE-49

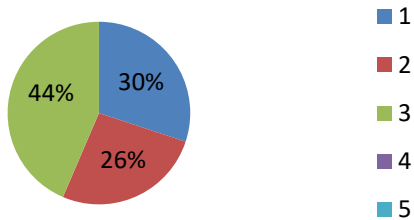
7) Whether faculty encourage questions from students



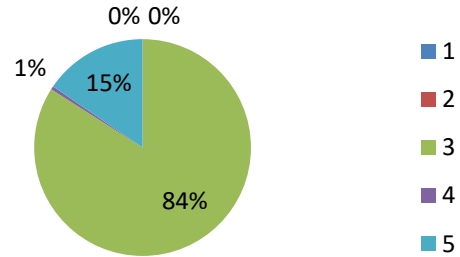
8) Is faculty inspire and guide students to explore more on topics taught



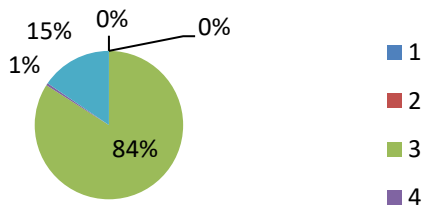
9) Whether activity based learning encouraged



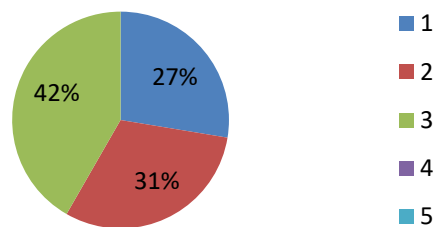
10) Is online learning encouraged



11) Assessment questions are in line with course learning objectives

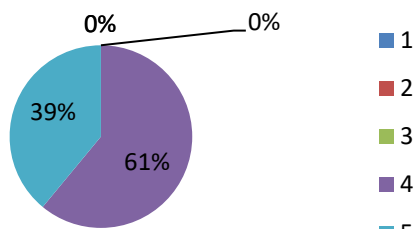


12) Provides feedback on grading

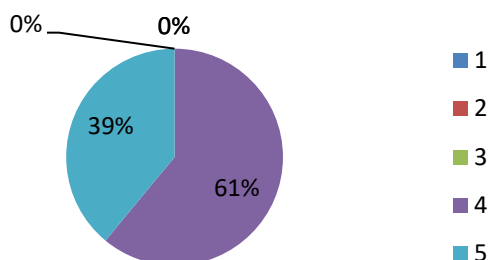



PRINCIPAL
EAST POINT COLLEGE OF PHARMACY
BIDARAHALLI, BANGALORE-49

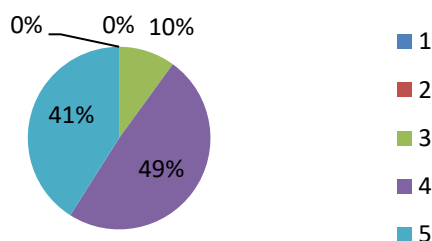
13) Faculty members grade students fairly



14) Cleanliness of the classroom



15) Laboratory equipments are in good condition




Sl. No	Questionnaire	Feedback	Action taken
1	Is online learning is encouraged	Majority of the students wanted online mode	Computers and related Software's have been procured for online teaching methods
2	Whether Laboratory equipment is in good condition	Few equipment is in good condition, few to be serviced	Service was done for upgrading the equipment's which were in poor condition
3	Whether staffs Providing feedback on grading	Majority of the students are not satisfied with the grading system.	Principal instructed the staffs to follow proper grading system

Pharm D

Responses: 218

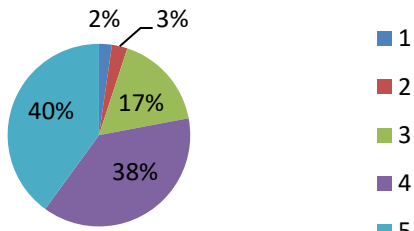
Sl. No	Feedback questions	Responses				
		1	2	3	4	5
1	Is course outcomes well defined	2.29%	2.79%	17%	38%	40%
2	Is syllabus matches with course outcome	1%	3.2%	19.2%	40%	35.3%
3	Course outcomes and syllabus are relevant to your career prospects	1.83%	2.29%	20.6%	36.2%	38.5%
4	Course syllabus and credits are assigned properly	0.5%	1.83%	19.7%	40.8%	37.15%
5	Course resources well defined	1%	3.6%	15.5%	41.2%	38.5%
6	Subject knowledge level of the faculty	1.37%	2.75%	19.7%	36.2%	39.4%
7	Whether faculty Encourage questions from students	1%	3.66%	20.6%	34%	40%
8	Is faculty inspire and guide students to explore more on topics taught	2%	1.37%	19.2%	38%	39.4%
9	Whether Activity based learning encouraged	1.5%	3%	17.8%	35.7%	41.7%
10	Is online learning encouraged	0.5%	3%	19.7%	32.5%	41.7%
11	Assessment questions are in line with course learning objectives	1%	2.4%	22.9%	30.7%	42.2%
12	Provides feedback on grading	0.5%	3.2%	20.1%	36.2%	39.4%
13	Faculty members grade students fairly	1.37%	1.37%	18.8%	37.6%	40.8%
14	Cleanliness of class room	2.5%	2%	16.5%	43.1%	35.7%
15	Whether laboratory condition are good	2%	3.6%	28.4%	32.5%	33.4%



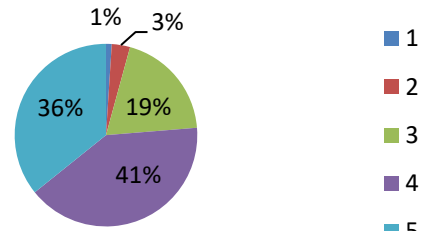
PRINCIPAL
EAST POINT COLLEGE OF PHARMACY
BIDARAHALLI, BANGALORE-49

Feedback Analysis: 2022-2023

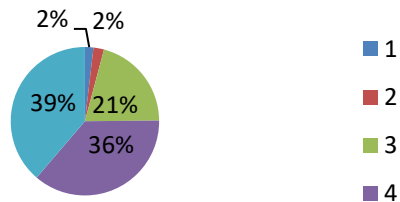
1) Is course outcomes well defined ?



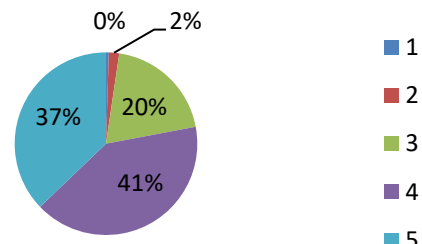
2) Is syllabus matches with course outcome ?



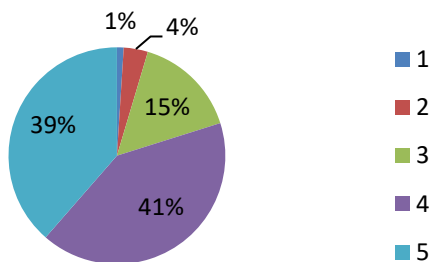
3) Course outcomes and syllabus are relevant to your career prospects ?



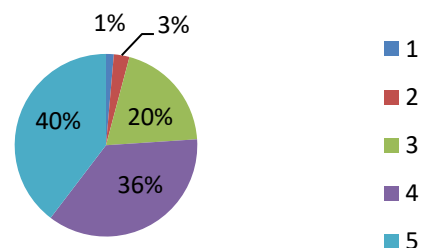

4) Course syllabus and credits are assigned properly



5) Course resources well defined

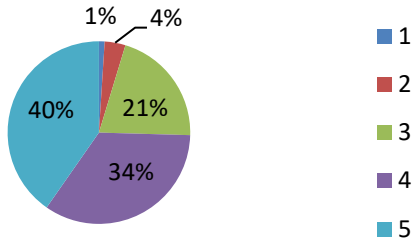


6) Subject knowledge level of the faculty member

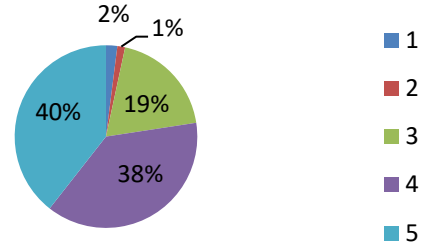



PRINCIPAL
EAST POINT COLLEGE OF PHARMACY
BIDARAHALLI, BANGALORE-49

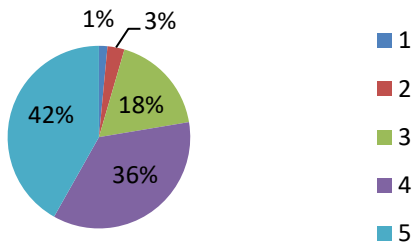
7) Encourage questions from students



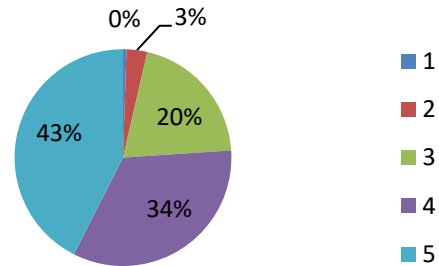
8) Inspire and guide students to explore more on topics taught



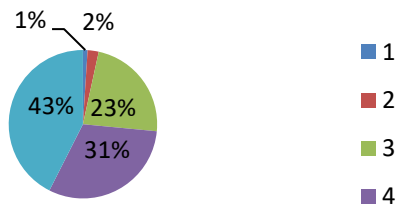
9) Activity based learning encouraged



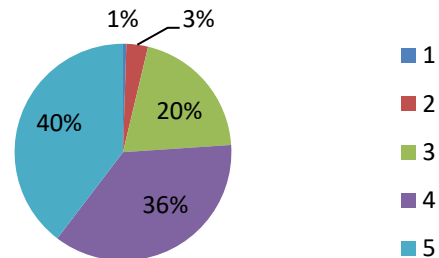
10) Online learning encouraged



11) Assessment questions are in line with course learning objectives

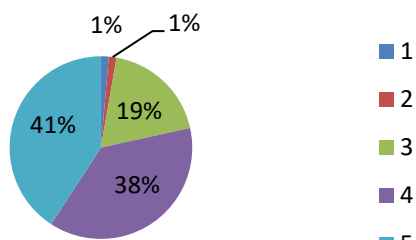


12) Provides feedback on grading

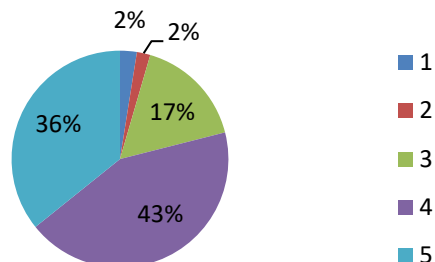



PRINCIPAL
EAST POINT COLLEGE OF PHARMACY
BIDARAHALLI, BANGALORE-49

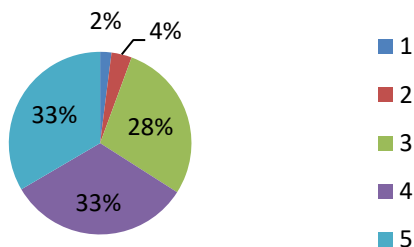
13) Faculty members grade students fairly




14) Cleanliness of the classroom



15) whether laboratory equipments are in good condition



Sl. No	Questionnaire	Feedback	Action taken
1	Cleanliness of Classroom	Some students complained classroom was dirty	Instructed the sweepers to clean the classroom twice the day
2	Weather assignment question help to learn how to apply the concepts	Students wanted exact questions based on university question paper	According to syllabus framed by the university assignment questions were helpful
3	Course outcomes and syllabus are relevant to your career prospects	Students suggested include more career-oriented programs	Career oriented seminars are organized


PRINCIPAL
EAST POINT COLLEGE OF PHARMACY
BIDARAHALLI, BANGALORE-49

M. Pharm (Pharmaceutics)

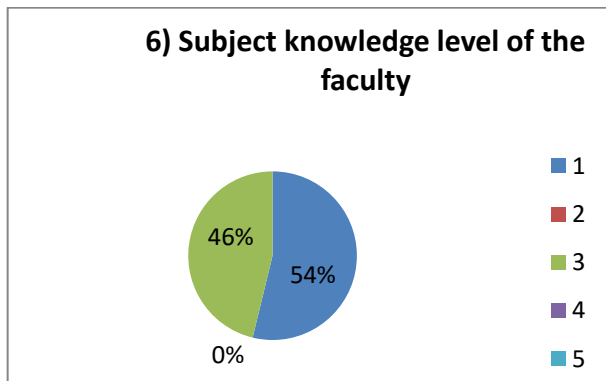
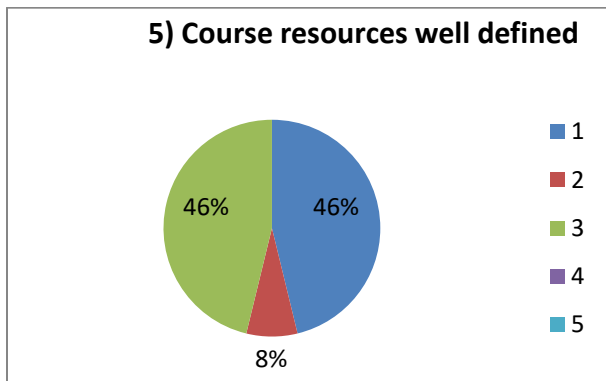
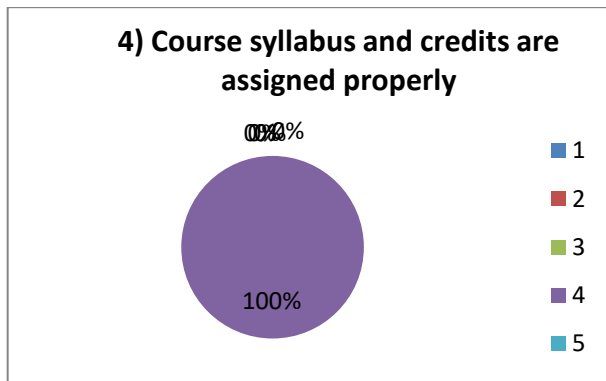
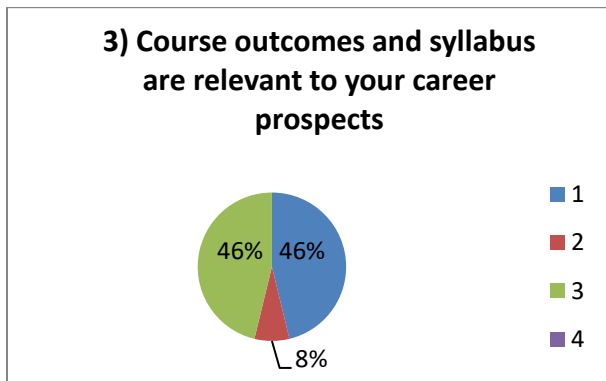
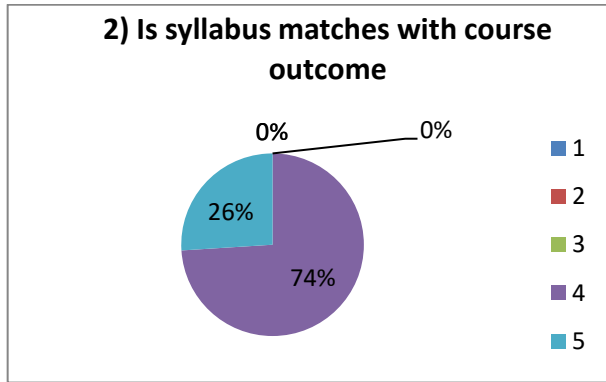
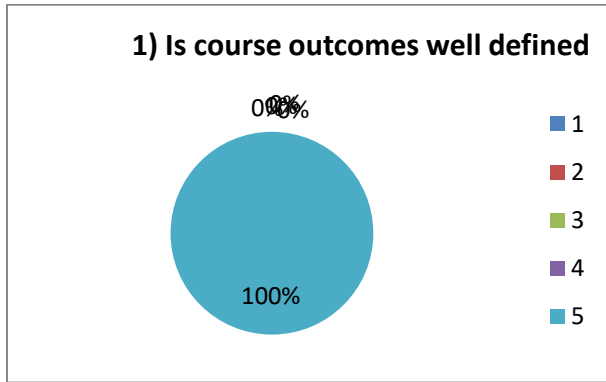
Responses: 26

Sl. No	Feedback questions	Responses				
		1	2	3	4	5
1	Is course outcomes well defined	0%	0%	0%	0%	100%
2	Is syllabus matches with course outcome	0%	0%	0%	26%	74%
3	Course outcomes and syllabus are relevant to your career prospects	0%	0%	0%	62%	38%
4	Course syllabus and credits are assigned properly	0%	0%	0%	100%	0%
5	Course resources well defined	0%	0%	62%	0%	38%
6	Subject knowledge level of the faculty	0%	0%	0%	0%	100%
7	Whether faculty Encourage questions from students	0%	0%	0%	74%	26%
8	Is faculty inspire and guide students to explore more on topics taught	0%	0%	62%	0%	38%
9	Whether Activity based learning encouraged	0%	0%	62%	0%	38%
10	Is online learning encouraged	0%	0%	0%	0%	100%
11	Assessment questions are in line with course learning objectives	0%	0%	0%	74%	26
12	Provides feedback on grading	0%	0%	62%	0%	38%
13	Faculty members grade students fairly	0%	0%	0%	100%	0%
14	Cleanliness of class room	0%	0%	62%	0%	38%
15	Whether laboratory condition are good	0%	0%	62%	0%	38%



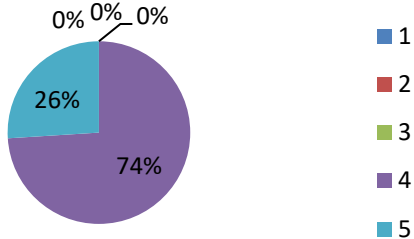
PRINCIPAL
EAST POINT COLLEGE OF PHARMACY
BIDARAHALLI, BANGALORE-49

Feedback Analysis: 2022-2023

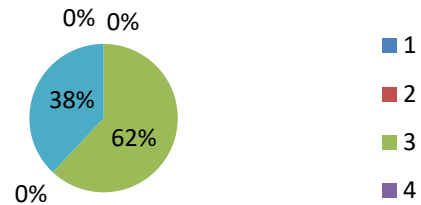



PRINCIPAL
EAST POINT COLLEGE OF PHARMACY
BIDARAHALLI, BANGALORE-49

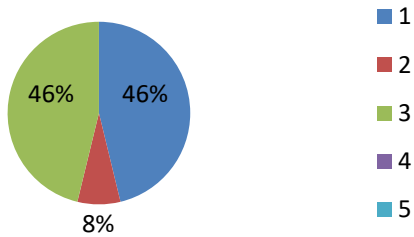
7) Whether faculty encourages questions from students



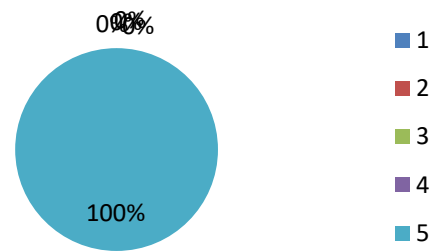
8) Is faculty inspire and guide students to explore more on topics taught



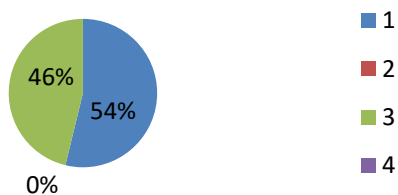
9) Whether activity based learning encouraged



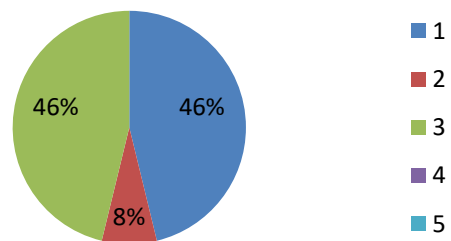

10) Is online learning encouraged



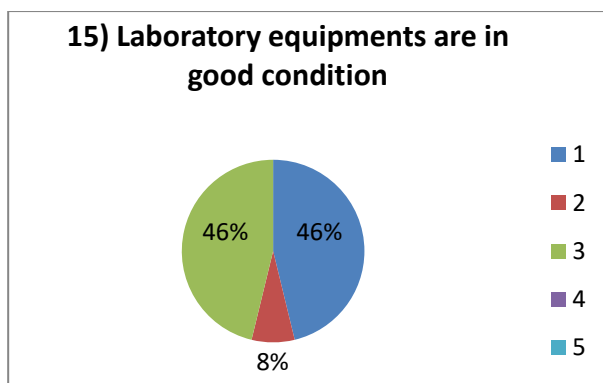
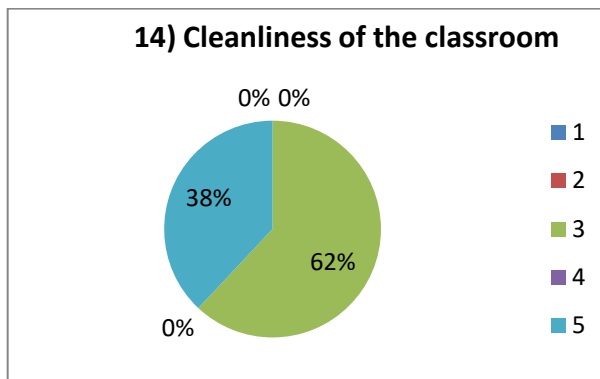
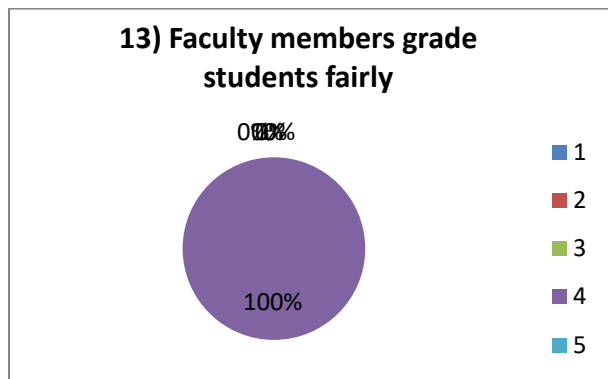
11) Assessment questions are in line with course learning objectives



12) Provides feedback on grading

PRINCIPAL
EAST POINT COLLEGE OF PHARMACY
BIDARAHALLI, BANGALORE-49




Sl. No	Questionnaire	Feedback	Action taken
1	Whether Laboratory equipment is in good condition	Few equipment are in good condition, few to be serviced	Service was done for upgrading the equipment's which were in poor condition
2	Is online learning is encouraged	Majority of the students wanted online mode	Computers and related Software's have been procured for online teaching methods
3	Is activity- based learning encouraged	Students were not satisfied with black board teaching	Open book tests, assignments, seminars and quiz were conducted

M. Pharm (Pharmacology)

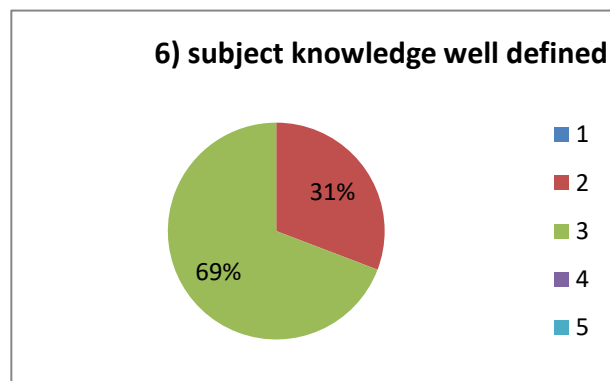
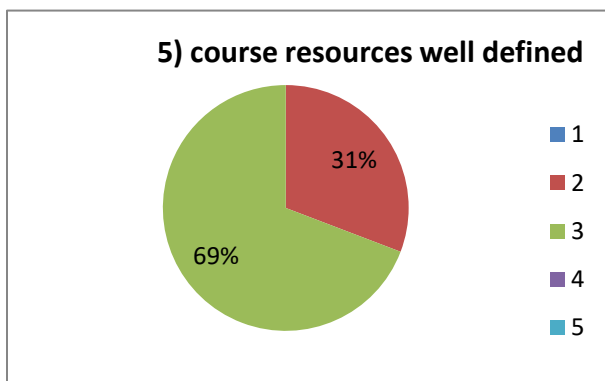
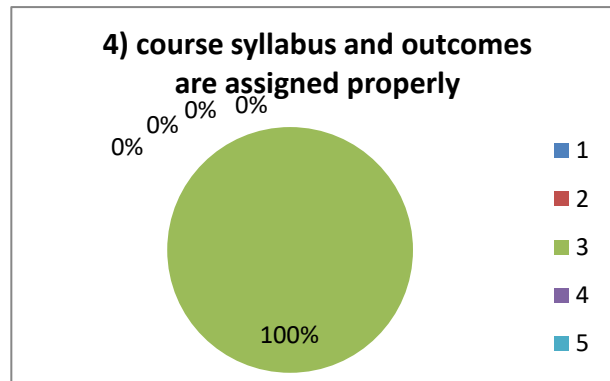
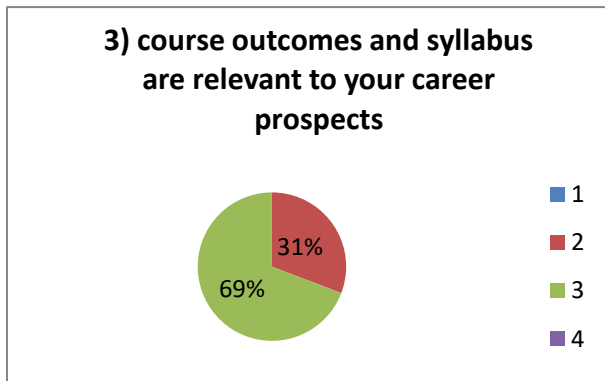
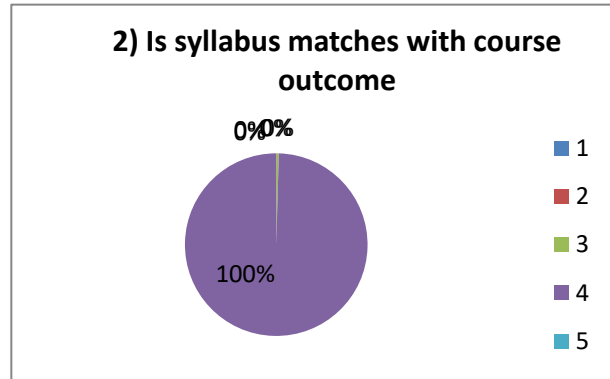
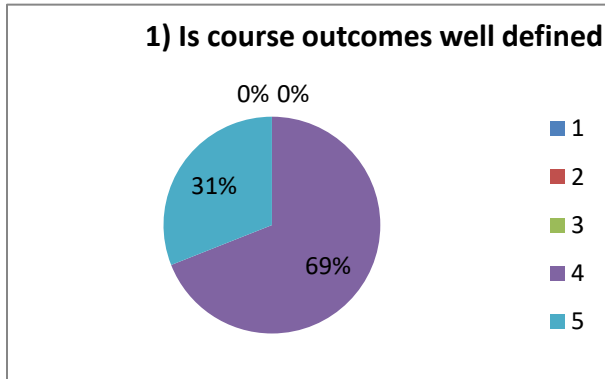
Responses: 13

Sl. No	Feedback questions	Responses				
		1	2	3	4	5
1	Is course outcomes well defined	0%	0%	0%	69%	31%
2	Is syllabus matches with course outcome	0%	0%	0%	100%	
3	Course outcomes and syllabus are relevant to your career prospects	0%	0%	0%	69%	31%
4	Course syllabus and credits are assigned properly	0%	0%	100%	0%	0%
5	Course resources well defined	0%	0%	100%	0%	0%
6	Subject knowledge level of the faculty	0%	0%	0%	69%	31%
7	Whether faculty Encourage questions from students	0%	0%	100%	0%	0%
8	Is faculty inspire and guide students to explore more on topics taught	0%	0%	0%	100%	0%
9	Whether Activity based learning encouraged	0%	0%	0%	69%	31%
10	Is online learning encouraged	0%	0%	0%	69%	31%
11	Assessment questions are in line with course learning objectives	0%	0%	0%	69%	31%
12	Provides feedback on grading	0%	0%	0%	69%	31%
13	Faculty members grade students fairly	0%	0%	0%	69%	31%
14	Cleanliness of class room	0%	0%	0%	0%	100%
15	Whether laboratory condition are good	0%	0%	100%	0%	0%



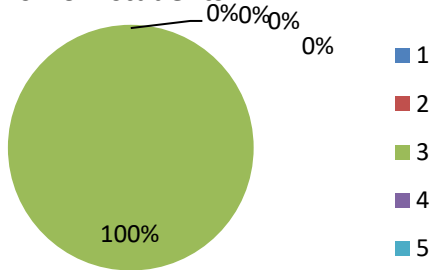
PRINCIPAL
EAST POINT COLLEGE OF PHARMACY
BIDARAHALLI, BANGALORE-49

Feedback Analysis: 2022-2023

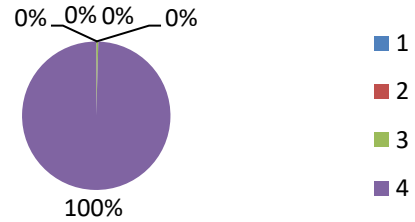



PRINCIPAL
EAST POINT COLLEGE OF PHARMACY
BIDARAHALLI, BANGALORE-49

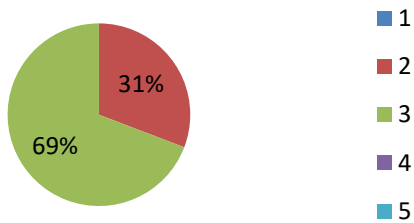
7) Whether faculty encourages questions from students



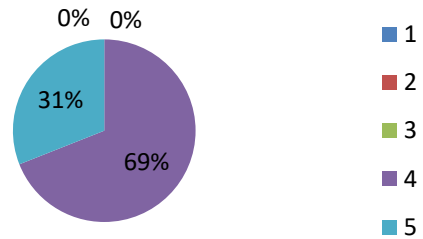
8) Is faculty inspire and guide students to explore more on topics taught



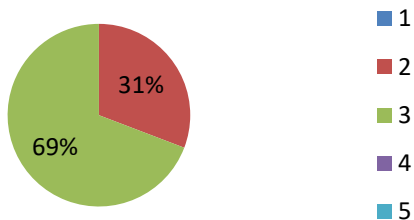
9) Whether activity based learning encouraged



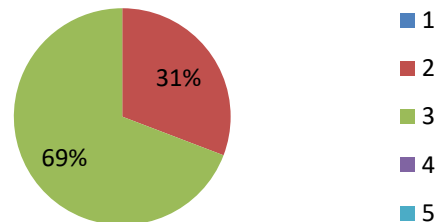
10) Whether online based learning encouraged



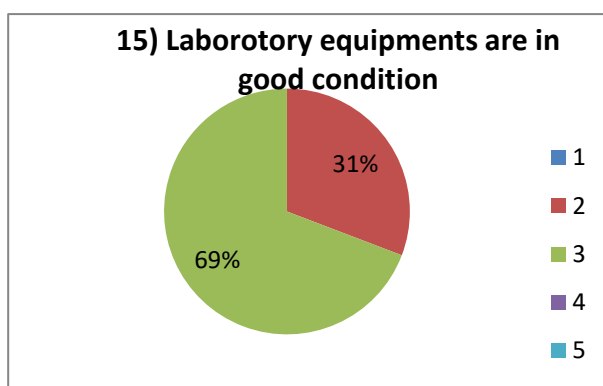
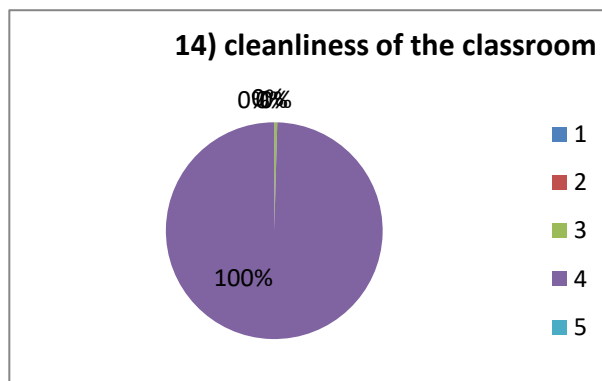
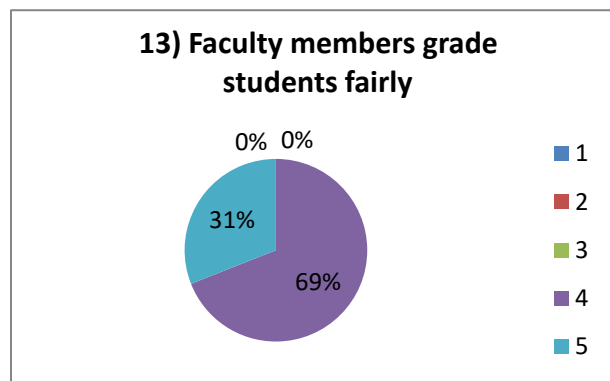
11) Assessment questions are in line with course learning objectives



12) Provides feedback on grading




PRINCIPAL
EAST POINT COLLEGE OF PHARMACY
BIDARAHALLI, BANGALORE-49



Sl. No	Questionnaire	Feedback	Action taken
1	Whether Laboratory equipment is in good condition	Few equipment are in good condition, few to be serviced	Service was done for upgrading the equipment's which were in poor condition
2	Whether Assessment questions are in line with course learning objectives	Most of the questions were not in order	HOD instructed the staffs to follow proper CO-PO procedure.
3	Is activity based learning encouraged	Students were not satisfied with black board teaching	Open book tests, assignments, seminars and quiz were conducted
4	Cleanliness of class room	Some students complained classroom was dirty	Instructed the sweepers to clean the classroom twice the day



East Point Campus, Jnana Prabha, Virgo Nagar Post,
Bengaluru – 560049, Karnataka

FEEDBACK FROM FACULTY

FEEDBACK FROM FACULTY

Feedback from the faculties for the Ambience and the Academic performance of the institution is collected through online mode (Google form). The feedback analysis is done and the analysis report is submitted to the principal and then to the management for the necessary actions.

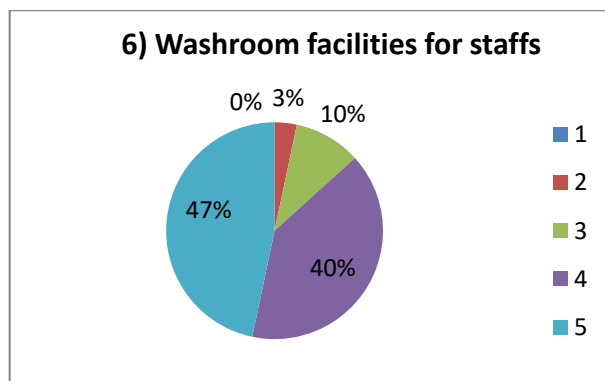
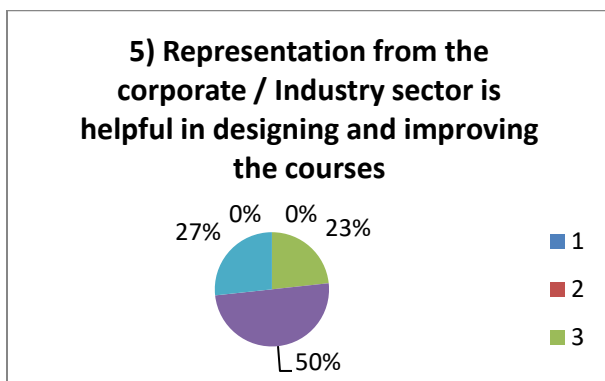
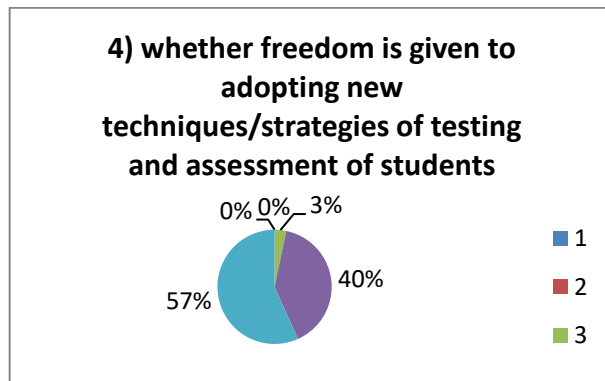
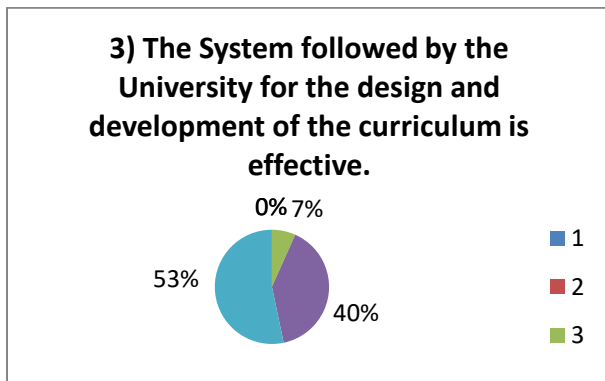
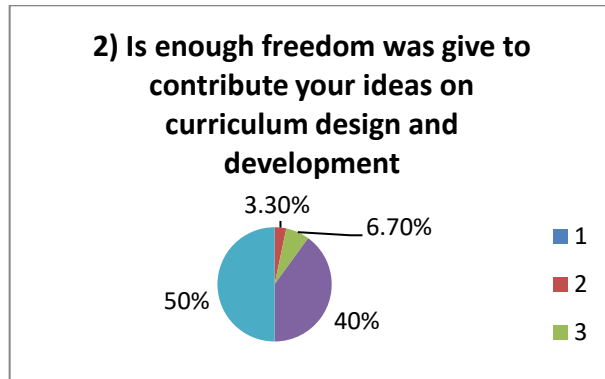
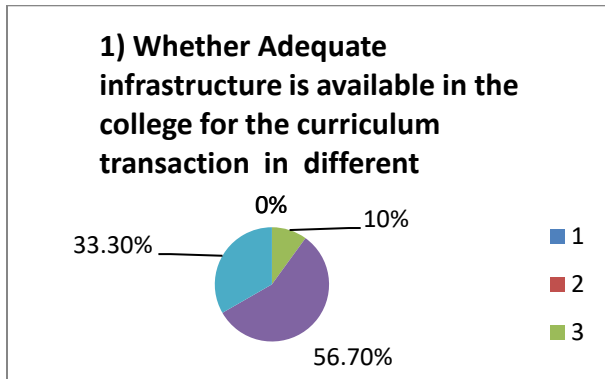
Responses: 32

Sl. No	Feedback questions	Responses				
		1	2	3	4	5
1	Whether Adequate infrastructure is available in the college for the curriculum transaction in different Modes	0%	0%	10%	56.7%	33.3%
2	Is enough freedom was given to contribute your ideas on curriculum design and development	0%	3.3%	6.7%	40%	50%
3	The System followed by the University for the design and development of the curriculum is effective.	0%	0%	6.7%	40%	53.3%
4	Whether Freedom is given in adopting new techniques/ strategies of testing and assessment of students	0%	0%	3.3%	40%	56.7%
5	Representation from the corporate / Industry sector is helpful in designing and improving the courses	0%	0%	23.3%	50%	26.7%
6	Washroom facilities for staffs	0%	3.3%	10%	40%	46.7%
7	Parking facilities for staffs	0%	0%	13.3%	40%	46.7%
8	Whether College timing is good	3.3%	0%	16.7%	43.3%	36.7%



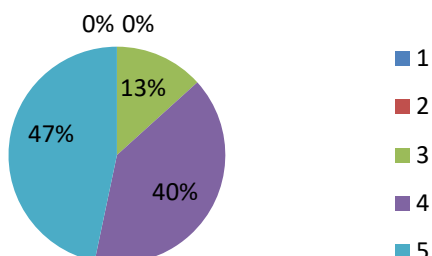
PRINCIPAL
EAST POINT COLLEGE OF PHARMACY
 BIDARAHALLI, BANGALORE-49

Feedback Analysis: 2022-2023

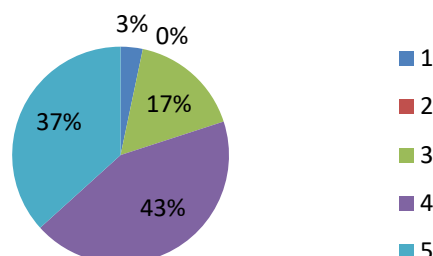



**PRINCIPAL
EAST POINT COLLEGE OF PHARMACY
BIDARAHALLI, BANGALORE-49**

7) Parking facilities for staffs



8) Whether College timing is good



Sl. No	Questionnaire	Feedback	Action taken
1	Whether Adequate infrastructure is available in the college for the curriculum transaction in different modes	Most of the staffs suggested to adapt new technologies for teaching	IQAC instructed faculty to include ICT facilities such as video clips, 3D presentations to make teaching learning students centric.
2	Is Representation from the corporate / Industry sector is helpful in designing and improving the courses	Staffs suggested to include corporate / Industry sector in designing and improving the courses	Suggestions forwarded to placement cell as it decided to include more companies in campus in designing and improving the courses



PRINCIPAL
EAST POINT COLLEGE OF PHARMACY
BIDARAHALLI, BANGALORE-49



East Point Campus, Jnana Prabha, Virgo Nagar Post,
Bengaluru – 560049, Karnataka

FEEDBACK FROM ALUMNI

FEEDBACK FROM ALUMNI

Feedback from the alumni for the Ambience and the Academic performance of the institution is collected through online mode (Google form). The feedback analysis is done and the analysis report is submitted to the principal and then to the management for the necessary actions.

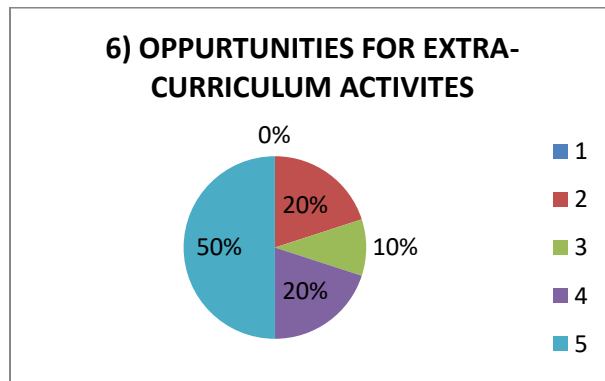
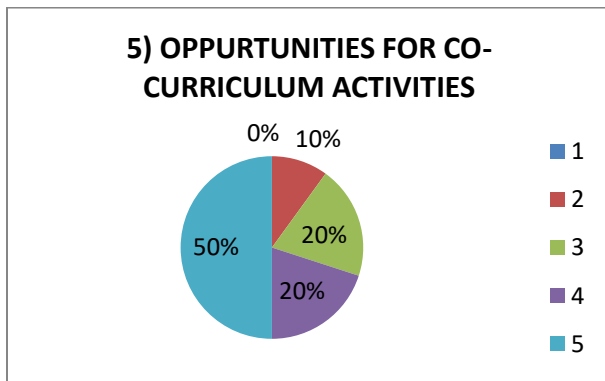
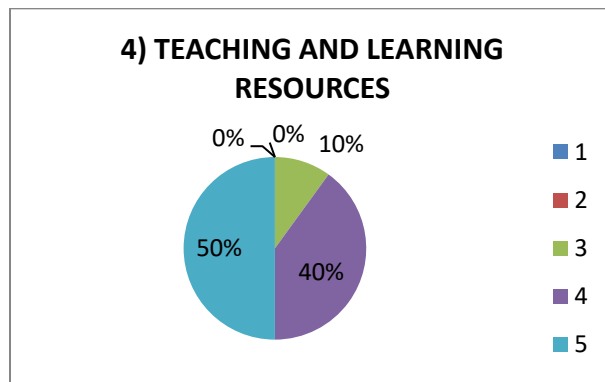
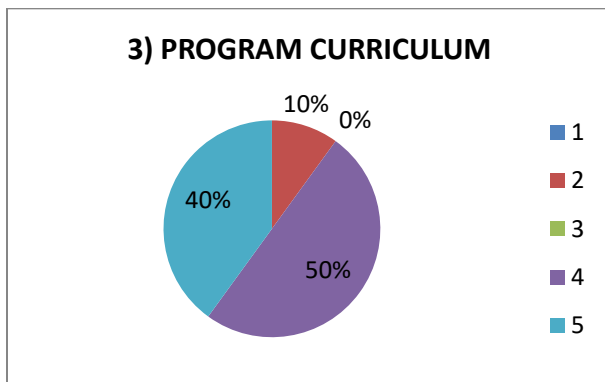
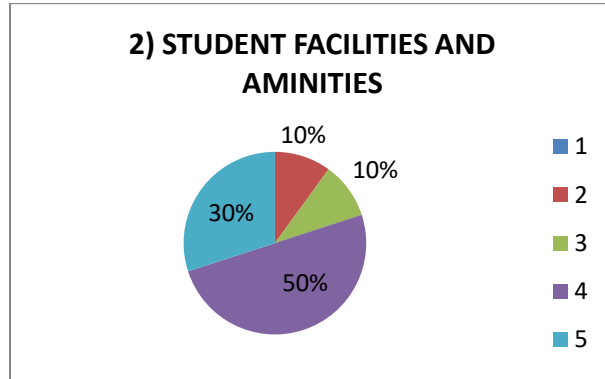
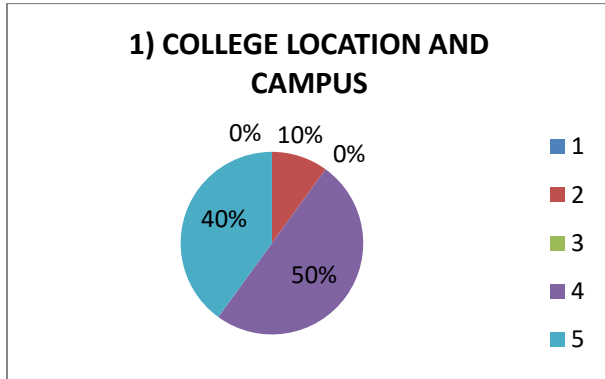
Responses: 44

Sl. No	Feedback questions	Responses				
		1	2	3	4	5
1	College location and campus	14.3%	0%	42.9%	0%	42.9%
2	Student facilities and amenities	28.6%	0%	14.3%	57.1%	0%
3	Program Curriculum	0%	0%	42.9%	14.3%	42.9%
4	Teaching and Learning Resources	14.3%	0%	14.3%	71.4%	0%
5	Opportunities for co-curricular activities	14.3%	0%	28.6%	28.6%	28.6%
6	Opportunities for extra- curricular activities	14.3%	0%	28.6%	14.3%	42.9%
7	Internship opportunities	0%	0%	42.9%	42.9%	14.3%
8	Placement opportunities	14.3%	0%	42.9%	42.9%	0%
9	Innovation and entrepreneurship opportunities	0%	0%	50%	20%	30%
10	Encouragement for Higher studies	10%	0%	20%	50%	20%



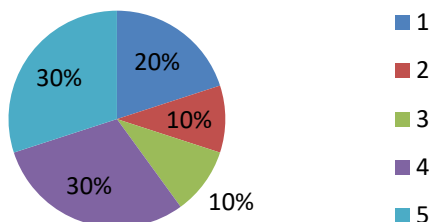
PRINCIPAL
EAST POINT COLLEGE OF PHARMACY
BIDARAHALLI, BANGALORE-49

Feedback Analysis: 2022-2023

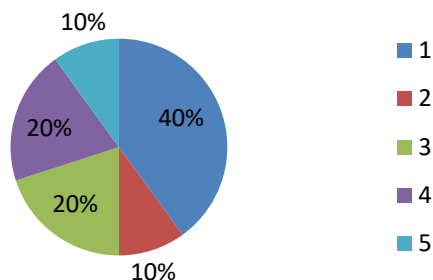



PRINCIPAL
EAST POINT COLLEGE OF PHARMACY
BIDARAHALLI, BANGALORE-49

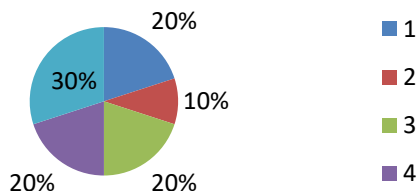
7) INTERNSHIP OPPURTUNITIES



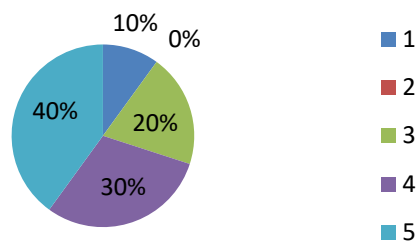
8) PLACEMENT OPPURTUNITIES



9) INNOVATION AND ENTREPRENEURSHIP OPPURTUNITIES



10) ENCOURAGEMENT FOR HIGHER STUDIES



Sl. No	Feedback	Action taken
1	Placement Opportunities	Placement Cell Has Initiated Placement Drive and Approached Various Companies for Placement of Students



PRINCIPAL
EAST POINT COLLEGE OF PHARMACY
BIDARAHALLI, BANGALORE-49



East Point Campus, Jnana Prabha, Virgo Nagar Post,
Bengaluru – 560049, Karnataka

PARENTS FEEDBACK ABOUT COLLEGE



East Point Campus, Jnana Prabha, Virgo Nagar Post,
Bengaluru – 560049, Karnataka

PARENT'S FEEDBACK ABOUT COLLEGE

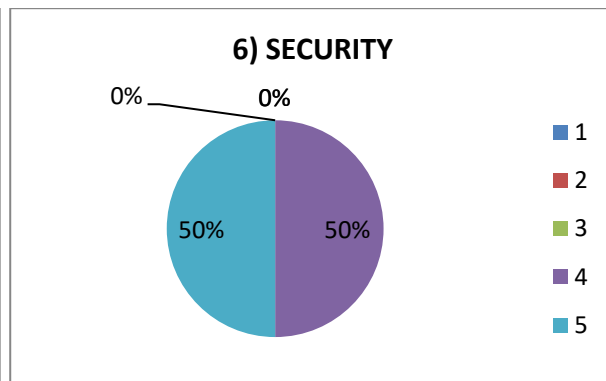
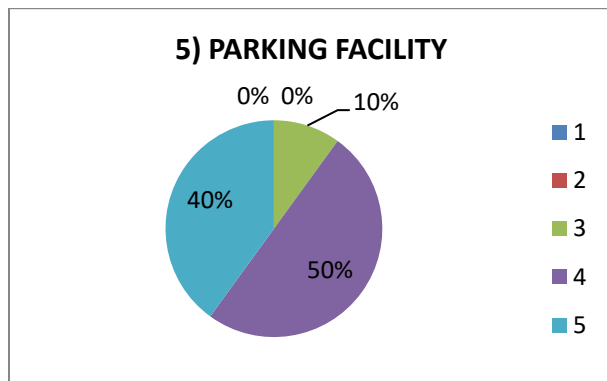
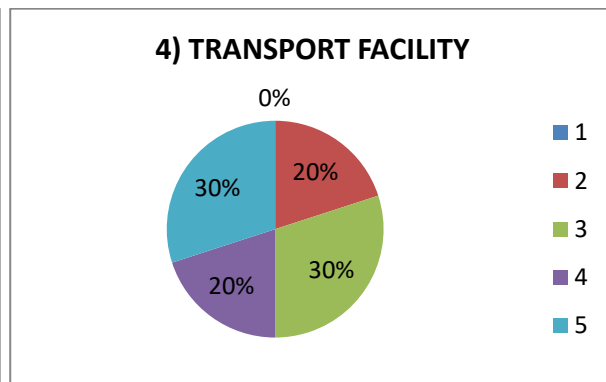
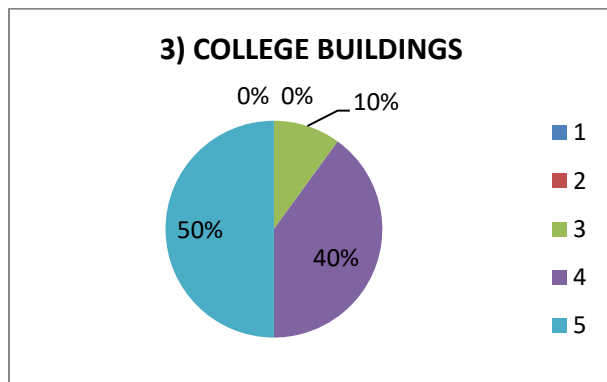
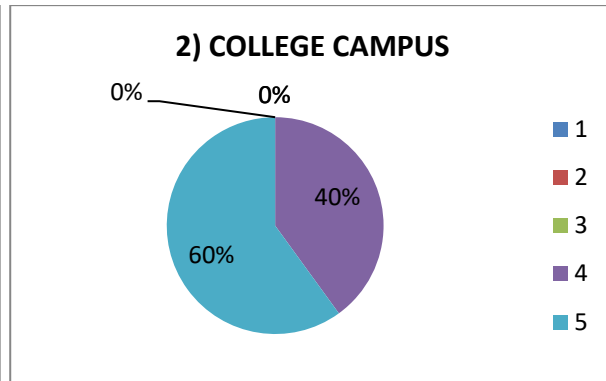
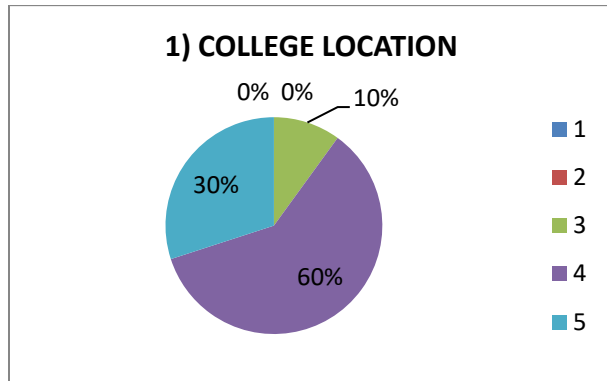
Feedback from the parents for the Ambience and the Academic performance of the institution is collected through online mode (Google form). The feedback analysis is done and the analysis report is submitted to the principal and then to the management for the necessary actions.

Responses: 10

Sl. No	Feedback questions	Responses				
		1	2	3	4	5
1	College Location	0%	0%	10%	60%	30%
2	College campus	0%	0%	0%	40%	60%
3	College Building	0%	0%	10%	40%	50%
4	Transport Facility	0%	20	30%	20%	30%
5	Parking Facility	0%	0%	10%	50%	40%
6	Security	0%	0%	0%	50%	50%
7	Co-Curricular Activities	0%	0%	20%	40%	40%
8	Extra-Curricular Activities	0%	0%	30%	30%	40%
9	Canteen Facilities	0%	30%	20%	30%	20%
10	Hostel Facilities	0%	20%	30%	40%	10%
11	Interaction with admission department	0%	10%	10%	80%	0%
12	Communication with college administrators / faculty members	0%	0%	0%	50%	50%

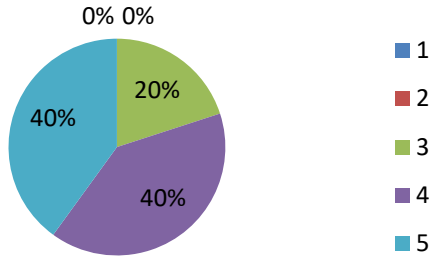

PRINCIPAL
EAST POINT COLLEGE OF PHARMACY
BIDARAHALLI, BANGALORE-49

Feedback Analysis: 2022-2023 (About College)

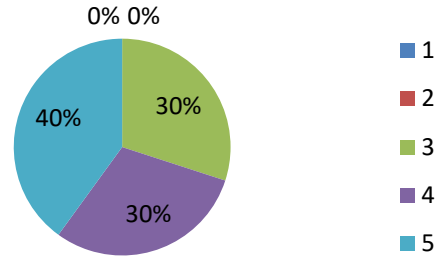



PRINCIPAL
EAST POINT COLLEGE OF PHARMACY
BIDARAHALLI, BANGALORE-49

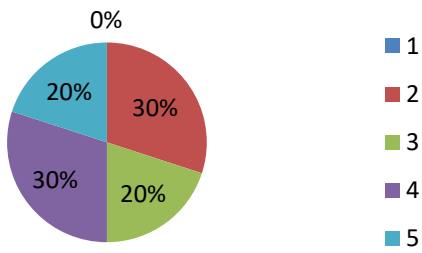
7) CO-CURRICULAR ACTIVITIES



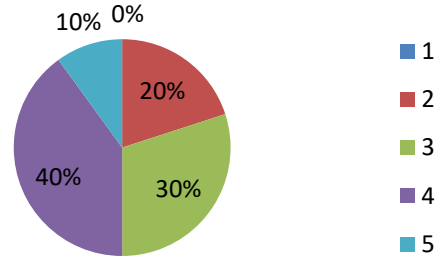
8) EXTRA-CURRICULUM ACTIVITIES



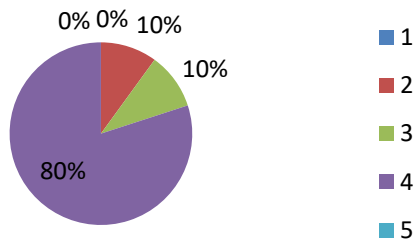
9) CANTEEN FACILITY



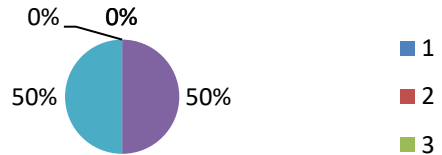
10) HOSTEL FACILITY



11) INTERACTION WITH ADMISSION DEPARTMENT



12) COMMUNICATION WITH COLLEGE ADMINISTRATORS/FACULTY MEMBERS




PRINCIPAL
EAST POINT COLLEGE OF PHARMACY
BIDARAHALLI, BANGALORE-49



East Point Campus, Jnana Prabha, Virgo Nagar Post,
Bengaluru – 560049, Karnataka

PARENTS FEEDBACK ABOUT ACADEMICS



**EAST
POINT** COLLEGE OF
PHARMACY

East Point Campus, Jnana Prabha, Virgo Nagar Post,
Bengaluru – 560049, Karnataka

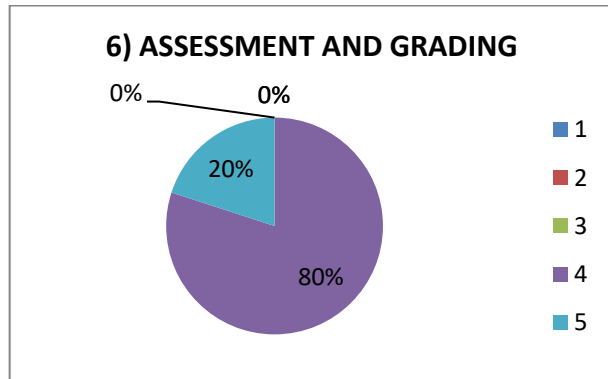
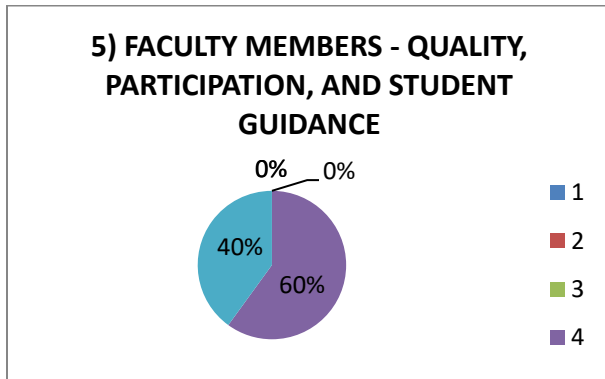
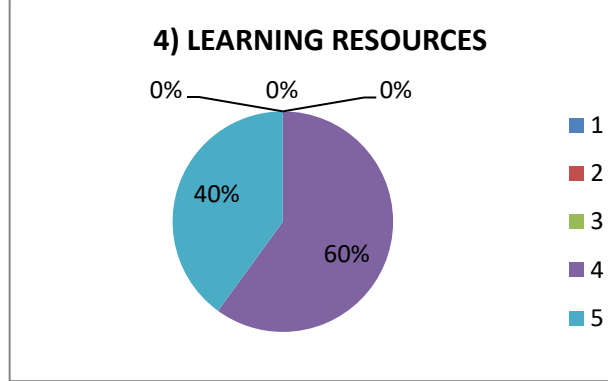
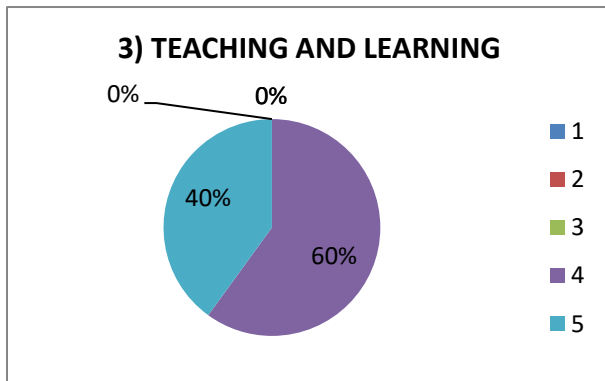
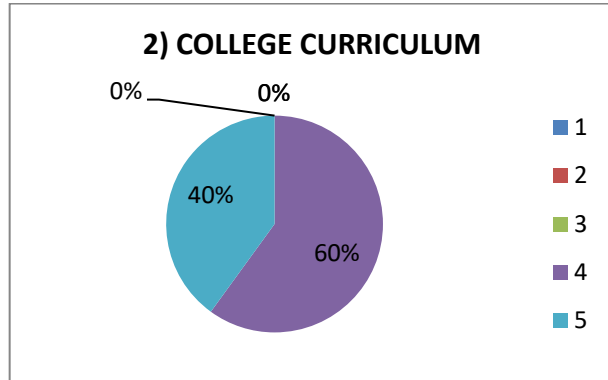
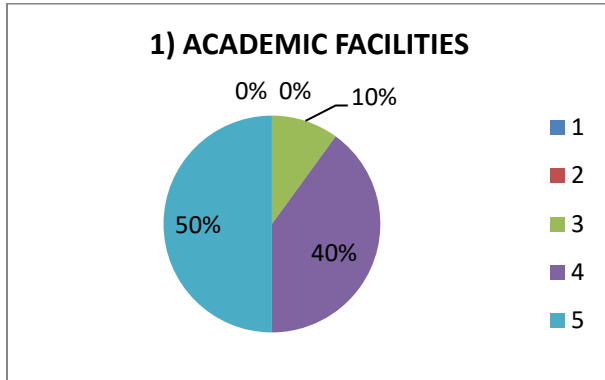
PARENT'S FEEDBACK ABOUT ACADEMICS

Sl. No	Feedback questions	Responses				
		1	2	3	4	5
1	Academic facilities	0%	0%	10%	40%	50%
2	College Curriculum	0%	0%	0%	60%	40%
3	Teaching and learning	0%	0%	0%	60%	40%
4	Learning Resources	0%	0%	0%	60%	40%
5	Faculty Members- Quality, Participation and students Guidance	0%	0%	0%	60%	40%
6	Assessment and grading	0%	0%	0%	80%	20%
7	Internship	0%	20%	20%	30%	30%
8	Training and Placement	30%	20%	30%	10%	10%
9	Opportunities beyond Curriculum	10%	0%	40%	20%	30%
10	Issuing of transcripts and academic documents	0%	0%	30%	30%	40%

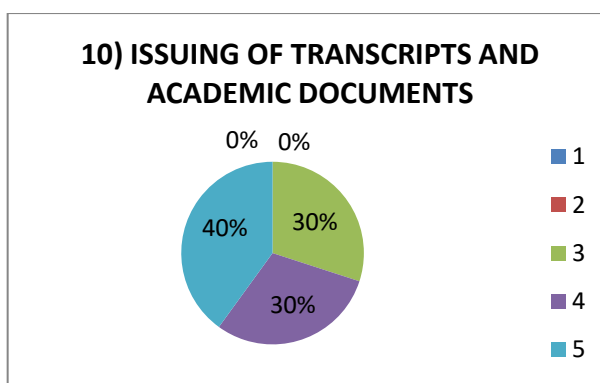
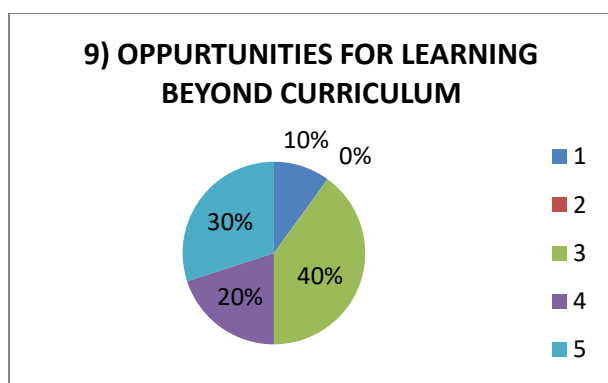
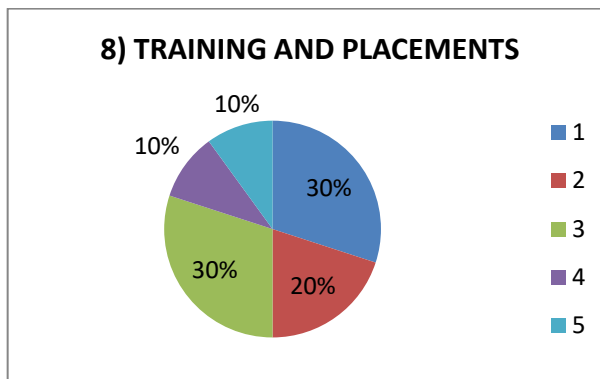
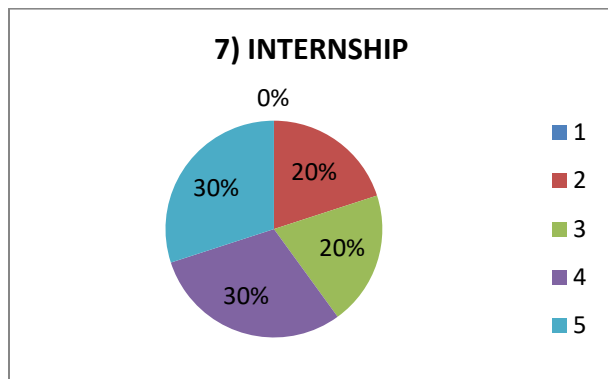

PRINCIPAL
EAST POINT COLLEGE OF PHARMACY
BIDARAHALLI, BANGALORE-49

Feedback Analysis: 2022-2023

About Academics




PRINCIPAL
EAST POINT COLLEGE OF PHARMACY
BIDARAHALLI, BANGALORE-49



Sl. No	Feedback	Action taken
1	About college	The institution has provided good infrastructure, canteen, parking, sports ground and with good hostel facilities.
2	Academics	The institution has experienced faculties with good computer lab and all labs are equipped with updated equipment



PRINCIPAL
EAST POINT COLLEGE OF PHARMACY
BIDARAHALLI, BANGALORE-49